

## Absolute-Encoder COH110 - SSI

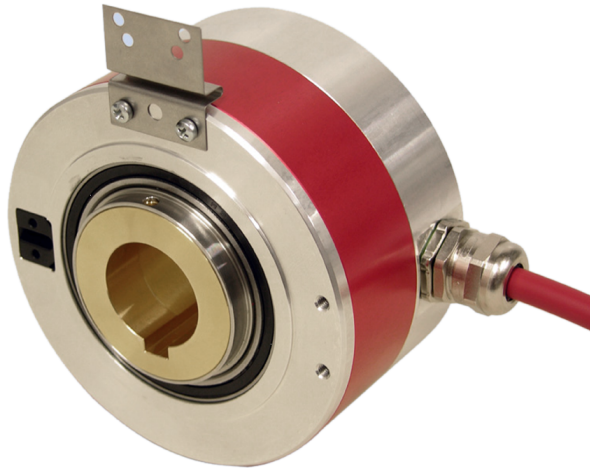
Ref.: K-COH110-SSI-1

18.11.2013

010102011003

### Advantages

- \_ Customer-specific solutions
- \_ Flexible programming
- \_ High resolution system



### General Data

|                                |                         |
|--------------------------------|-------------------------|
| Supply                         |                         |
| - Supply voltage               | 11...27 VDC             |
| - Optional                     | 5 VDC $\pm$ 5 %         |
| Current consumption no load    | $\leq$ 110 mA           |
| Device design                  |                         |
| - Type                         | Single-/Multi-Turn      |
| Total resolution               | $\leq$ 36 Bit           |
| Number of steps per revolution | $\leq$ 262144           |
| Number of revolutions          | $\leq$ 256000           |
| SSI - Interface                |                         |
| - SSI-Clock input              | Optocoupler             |
| - SSI-Data output              | RS-422, 2-wire          |
| - SSI-Clock frequency          | 80...1000 kHz           |
| - SSI-Mono time, typically     | 20 $\mu$ s              |
| Incremental - Interface        |                         |
| - Equipment                    | Optional interface      |
| - Incremental signals, square  | $K1 \pm K2 \pm K0 \pm$  |
| - Impulses, square wave        | 4096 $\square$          |
| - Output driver, TTL           | RS-422, 5 VDC           |
| - Output driver, HTL           | Push-Pull, 11...27 VDC  |
| Cycle time                     | 0.250 $\mu$ s, internal |
| Parameter/Function, changeable | Resolution              |

Subject to change.

TR-Electronic GmbH  
 Eglisshalde 6  
 78647 Trossingen  
 Tel. +49 (0) 7425 228-0  
 info@tr-electronic.de  
[www.tr-electronic.de](http://www.tr-electronic.de)

## Absolute-Encoder COH110 - SSI

Ref.: K-COH110-SSI-1

18.11.2013

010102011003

### General Data continuation

|                               |                             |
|-------------------------------|-----------------------------|
|                               | Output code                 |
|                               | Output format               |
|                               | Preset parameter            |
|                               | Toggle bit                  |
|                               | Counting direction          |
| Type of parametrization       | programmable                |
| Prgramming - Tool             | TR-Soft: TRWinProg          |
| External inputs               |                             |
| - F/R                         | Count direction             |
| - Preset                      | electronic adjustment       |
| - Logic level                 | "0" < +2V, "1" = Supply     |
| Maximum Speed, mechanically   | <= 2000 1/min               |
| Shaft load, axial/radial      | Own mass                    |
| Bearing life time             | >= 3.9E+10 revolutions      |
| Bearing life time - Parameter |                             |
| - Speed                       | 2000 1/min                  |
| - Operating temperature       | 60 °C                       |
| Angular acceleration          | <= 10E+4 rad/s <sup>2</sup> |
| Moment of inertia, typically  | 525E-6 kg m <sup>2</sup>    |
| Start-up torque, 20 °C        | 8 Ncm                       |
| Mass, typically               |                             |
| - Without shaft insert        | 1.200 kg                    |
| - With shaft insert           | 1.750 kg                    |

### Environmental conditions

|                          |                          |
|--------------------------|--------------------------|
| Vibration                |                          |
| - Specific value         | <= 100 m/s <sup>2</sup>  |
| - Sine                   | 50...2000 Hz             |
| Shock                    |                          |
| - Specific value         | <= 1000 m/s <sup>2</sup> |
| - Half sine              | 11 ms                    |
| Immunity to disturbance  | DIN EN 61000-6-2         |
| Transient emissions      | DIN EN 61000-6-3         |
| Working temperature      |                          |
| - Standard               | 0...+60 °C               |
| - Optional               | -20...+70 °C;            |
| Storage temperature, dry | -30...+80 °C             |

Subject to change.

## Absolute-Encoder COH110 - SSI

Ref.: K-COH110-SSI-1

18.11.2013

010102011003

### Environmental conditions continuation

|                                |                      |
|--------------------------------|----------------------|
| Relative humidity              | 98 %, non condensing |
| Protection class<br>- Standard | IP54                 |

Subject to change.

