



DVT 500 Series L3 Enclosure Harsh Environment, NEMA 4X

Product Features

- Built for highly corrosive environments
- Designed specifically for the DVT 500 series Sensor
- Meets IP66 standards (depending on configuration)
- 316 Stainless steel construction
- Designed to work in **food** applications
- Camera to Viewport Distance can be changed to handle longer lenses
- Comes standard with polycarbonate or glass viewport
- Works with pre-made cables

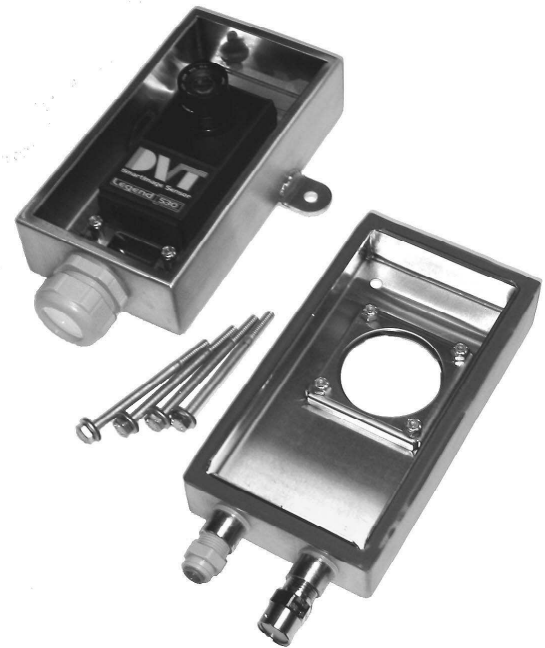
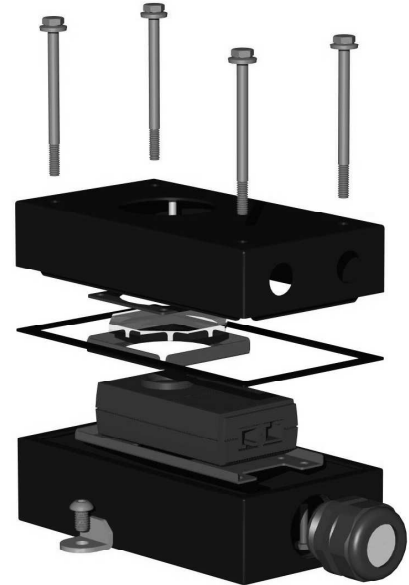
The L3 enclosure is a 316 stainless steel housing for your DVT 500 series SmartSensor designed to work in highly corrosive environments. It is also designed to work in food applications, with care taken to reduce pockets where water might sit.

The enclosure is highly configurable, with options for both drillable and single cable cord grips, air cooling options and an air curtain faceplate option.

The standard cable gland at the bottom of the enclosure uses a split insert to provide a watertight seal around 1 or more cables. The gland allows passage of the standard I/O & power cable (and the Ethernet cable) without removal of the connectors from the cables.

The enclosure is designed so that once the enclosure cover is removed, the user has full access to the lens, taking the guesswork out of changing focus and f-stop settings.

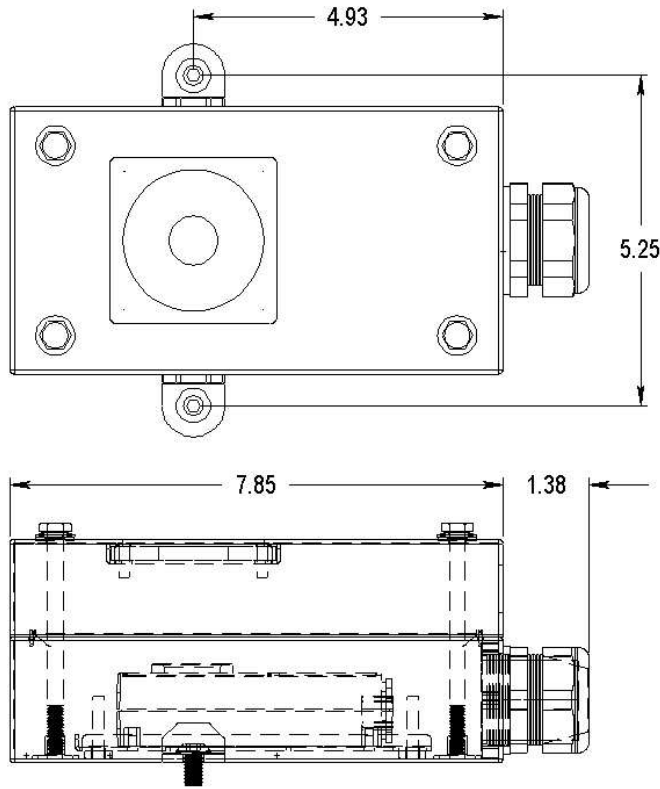
The standard L3 enclosure handles a lens length of 40mm, and spacers allow the lens to be adjusted close to the viewport to reduce reflections. The enclosure is also designed to readily accommodate large diameter lenses for custom applications.



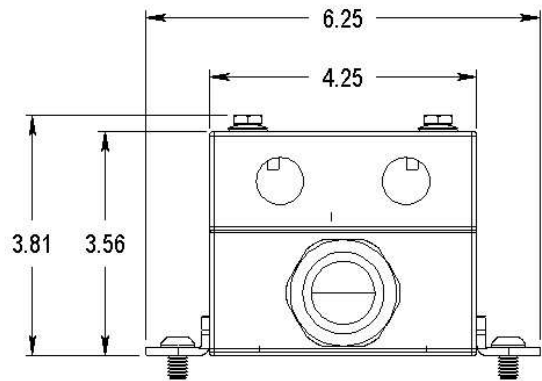
DVT 500 Series L3 Enclosure

Harsh Corrosive Environments, Washdown applications

Dimensions for Part Number L3-AA / L3-BA



Max camera lens height: 2.98" for standard enclosure
Extended enclosure available for long lenses



Enclosure is constructed of 18 gauge Type 316 stainless steel.
All external fasteners are 316 stainless steel.
Fasteners (M4x8 BHSCS) to mount the DVT Legend 500 series SmartImage Sensor are included.

Camera can be raised inside the enclosure by 10mm to better accommodate wide angle lenses.

Enclosure meets NEMA 4X standards when equipped with single cable cord grips.

Cord grip options include: Single cable cord grips (PG11), drillable PG29 29mm cord grip, 1" NPT conduit, 3/8" NPT connectors for air cooling and pressure regulation.

Weight: 3.2 Lb

Part Number: L3-AA (PG29 cord grip, polycarbonate viewport)
L3-BA (PG29 cord grip, glass viewport)
L3-CA (all fittings mentioned above, air curtain gasket, both viewports)



The SmartImage Sensor Specialists
1670 Oakbrook Drive, Suite 330
Norcross, GA 30093-1849

Phone: (770) 449-4960 • Fax: (770) 449-3073
<http://www.dvtsensors.com>