

## COGNEX INDUSTRIAL CAMERAS

- Trusted Cognex® brand
- Designed for Cognex Vision Software
- GigE Vision® standard

The Cognex family of digital industrial cameras are designed for easy integration with our industry-leading Cognex Vision Software products. These small, lightweight cameras can address a wide variety of applications.

Cognex stands behind its reputation as being the leader in the machine vision market and now you can too. Show your true colors—Cognex's signature black and yellow that is—and show your customers that you have the leading machine vision technology integrated into your system.

Integration with Cognex Vision Software provides access to a comprehensive library of tools for meeting all of your machine vision needs.



### GigE Vision

GigE Vision is a global camera interface standard developed using the Gigabit Ethernet communication protocol. GigE Vision allows for fast image transfer using low cost standard cables over very long lengths. Cognex GigE Vision cameras offer robust performance at an affordable price in a compact form factor.



- Area scan and line scan
- 1.3–31 MP resolution
- Global and rolling shutters
- Small footprint
- Precise sensor alignment
- I/O flexibility with minimum delay and jitter for applications requiring exact timing
- 3-year warranty

Cognex Designer makes it faster to build complete vision applications and allows developers to more easily take full advantage of the powerful VisionPro tool library. Learn more at [www.cognex.com/products/machine-vision/vision-software/cognex-designer-software](http://www.cognex.com/products/machine-vision/vision-software/cognex-designer-software)

VisionPro software makes it faster than ever to create and deploy solutions for the most challenging machine vision applications. Learn more at [www.cognex.com/visionpro](http://www.cognex.com/visionpro)

The most popular and standard proven data interfaces in the vision market means you benefit from GigE Vision market leadership, easy multi-camera setups and 100-meter cable length.

The advantages include:

- One cable solutions: Gigabit Ethernet with PoE
- Latest CMOS sensors



## Model Comparison

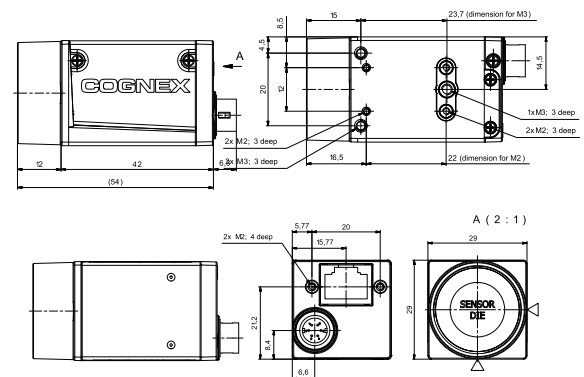
AREA SCAN									
Model Number	Body Type	Resolution	Frame Rate	Sensor Type	Sensor	Sensor Size	Power Consumption	Lens Mount	Color / Mono
ROLLING SHUTTER									
CAM-CIC-5MR/5000R	A	5MP	14 fps	CMOS	Aptina MT9P031	1/2.5"	2.5 W / 2.2 W	C	C, M
CAM-CIC-10MR	A	10MP	10 fps	CMOS	Aptina MT9J003	1/2.3"	3.3 W / 3.5 W	C	C, M
CAM-CIC-12MR	A	12MP	8 fps	CMOS	Sony IMX226	1/1.7"	2.5 W / 2.9 W	C	C,M
GLOBAL SHUTTER									
CAM-CIC-1300	A	1.3MP	60 fps	CMOS	e2v EV76C560	1/1.8"	2.4 W / 2.0 W	C	C, M
CAM-CIC-2000-60	A	2MP	60 fps	CMOS	e2v EV76C570	1/1.8"	2.1 W / 2.5 W	C	M
CAM-CIC-4000	A	4MP	25 fps	CMOS	CMOSIS CMV4000	1"	3.4 W / 2.9 W	C	C, M
CAM-CIC-5000-20	A	5MP	24 fps	CMOS	Sony IMX264	2/3"	2.4 W / 2.8 W	C	C,M
CAM-CIC-3100	G	31MP	3.82 fps	CMOS	Sony IMX342	APS-C	5.4W / 6.7 W	F	C,M
LINE SCAN									
Model Number	Body Type	Resolution	Frame Rate	Sensor Type	Sensor	Sensor Size	Power Consumption	Lens Mount	Color / Mono
CAM-CIC-4KL-24	R	4K	24kHz	CMOS	Awaiba DR-4K-7		4 W	F	M

## AREA SCAN

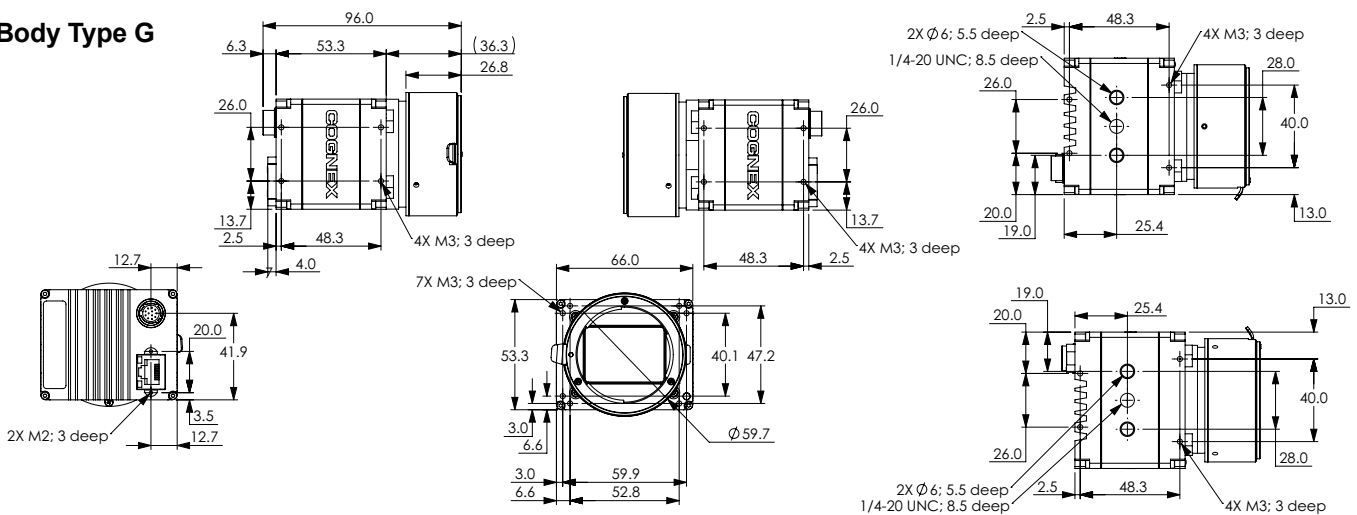
Models	CIC-1300	CIC-2000	CIC-4000	CIC-5000-20	CIC-3100
Shutter	Global				
Pixel Bit Depth	12 bits			10 or 12 bits	12 bits
Synchronization	hardware trigger; free-run; Ethernet connection			software trigger, hardware trigger, free-run	trigger over Ethernet via Action Commands
Exposure Control	programmable via the camera API			programmable via the camera API; hardware trigger	auto exposure
Digital I/O	1 input, 1 output			1 input, 1 output, 1 general purpose	TTL: 1 input, 2 outputs Opto-isolated: 1 input, 2 outputs RS232: 1
Power Requirements	PoE or 12–24 VDC				PoE or 7–25 VDC
Form Factor (L x W x H)	Body Type A: 42 mm x 29 mm x 29 mm				Body Type G: 96 mm x 66 mm x 53.3 mm
Housing Temperature	up to 50 °C				-20 °C to +50 °C
Weight	90g				372g
Compliance	CE, RoHS, GenICam, GigE Vision, IP30, UL, FCC, IEEE 802.3af (PoE)				CE, RoHS, FCC

Models	CIC-5000R/ CIC-5MR	CIC-10MR	CIC-12MR
Shutter	Rolling		
Pixel Bit Depth	12 bits		10 or 12 bits
Synchronization	hardware trigger; free-run; Ethernet connection		software trigger, hardware trigger, free-run
Exposure Control	programmable via the camera API; hardware trigger	programmable via the camera API	
Digital I/O	1 input, 1 output		1 input, 1 output, 1 general purpose
Power Requirements	PoE or 12 VDC	PoE or 12–24 VCD	
Form Factor (L x W x H)	Body Type A: 42 mm x 29 mm x 29 mm		
Housing Temperature	up to 50 °C		
Weight	90g		
Compliance	CE, RoHS, GenICam, GigE Vision, IP30, UL, FCC, IEEE 802.3af (PoE)		

### Body Type A



### Body Type G



The CIC-4KL provides high performance thanks to CMOS technology. Its compact, slim, industrial housing is ideally suited for multi-camera systems with many line scan cameras installed next to each other. Based on their standard width of 56 mm, they can easily replace older line scan camera models.

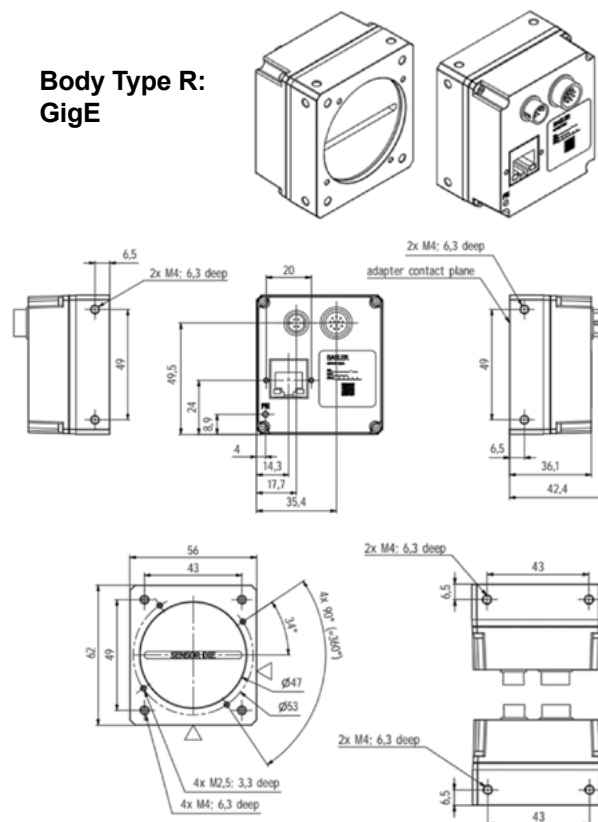
The advantages include:

- 4k resolution
- Max. line rates of 26 kHz
- Outstanding price/performance ratio
- Fully quality tested and calibrated for consistently high performance and reliability



LINE SCAN	
Models	CIC-4KL-24
Pixel Bit Depth	8/12 bits
Synchronization	software trigger, hardware trigger, free-run
Exposure Control	trigger width or timed
Digital I/O	3 input, 2 output
Power Requirements	12–24 VDC
Form Factor (L x W x H)	Body Type R: 36 mm x 56 mm x 62 mm
Housing Temperature	up to 50 °C
Weight	240g
Compliance	CE, RoHS, GenICam, GigE Vision, IP30, UL, FCC

**Body Type R:  
GigE**



# COGNEX

Companies around the world rely on Cognex vision and barcode reading solutions to optimize quality, drive down costs and control traceability.

**Corporate Headquarters** One Vision Drive Natick, MA 01760 USA

## Regional Sales Offices

### Americas

North America +1 844-999-2469  
Brazil +55 (11) 2626 7301  
Mexico +800 733 4116

### Europe

Austria +49 721 958 8052  
Belgium +32 289 370 75  
France +33 1 7654 9318  
Germany +49 721 958 8052

Hungary +36 800 80291  
Ireland +44 121 29 65 163  
Italy +39 02 3057 8196  
Netherlands +31 207 941 398  
Poland +48 717 121 086  
Spain +34 93 299 28 14  
Sweden +46 21 14 55 88  
Switzerland +41 445 788 877  
Turkey +90 216 900 1696  
United Kingdom +44 121 29 65 163

### Asia

China +86 21 6208 1133  
India +9120 4014 7840  
Japan +81 3 5977 5400  
Korea +82 2 530 9047  
Malaysia +6019 916 5532  
Singapore +65 632 55 700  
Taiwan +886 3 578 0060  
Thailand +66 88 7978924  
Vietnam +84 2444 583358

© Copyright 2020, Cognex Corporation. All information in this document is subject to change without notice. All Rights Reserved. Cognex and VisionPro are registered trademarks and Cognex Designer and the Cognex logo are trademarks of Cognex Corporation. All other trademarks are property of their respective owners.  
Lit. No. C1CDS-04-2020

[www.cognex.com](http://www.cognex.com)