



**Model Number**

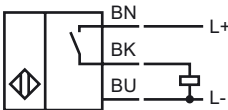
IMT 18-8N-PS-K3

Inductive sensor

**Features**

- Basic series
- 8 mm not embeddable

**Connection**

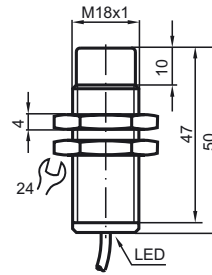


**Safety Note**



The use of this device in applications, where the safety of persons depends from the devices function, is not allowed!

**Dimensions**



**Technical Data**

**General specifications**

Switching element function	PNP Make function
Rated operating distance	$s_n$ 8 mm
Installation	not embeddable
Output polarity	DC
Assured operating distance	$s_a$ 0 ... 6.48 mm
Reduction factor $r_{Al}$	0.5
Reduction factor $r_{Cu}$	0.4
Reduction factor $r_{V2A}$	0.7
Reduction factor $r_{St37}$	

**Nominal ratings**

Operating voltage	$U_B$	10 ... 30 V
Switching frequency	$f$	0 ... 500 Hz
Hysteresis	H	typ. 5%
Reverse polarity protection		protected against reverse polarity
Short-circuit protection		pulsing
Voltage drop	$U_d$	$\leq 3$ V
Operating current	$I_L$	0 ... 200 mA
Off-state current	$I_r$	0 ... 0.5 mA typ. 0.1 $\mu$ A at 25 °C
No-load supply current	$I_o$	$\leq 18$ mA
Indication of the switching state		all direction LED, yellow

**Standard conformity**

Standards	IEC / EN 60947-5-2:2004
-----------	-------------------------

**Ambient conditions**

Ambient temperature	-25 ... 70 °C (248 ... 343 K)
---------------------	-------------------------------

**Mechanical specifications**

Connection type	2 m, PVC cable
Core cross-section	0.34 mm <sup>2</sup>
Housing material	brass, nickel-plated
Sensing face	PBT
Protection degree	IP67

**Approvals and certificates**

UL approval	cULus Listed, General Purpose
-------------	-------------------------------