



Model Number

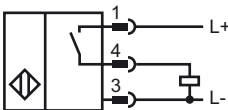
IMT 18-8B-PS-L4

Inductive sensor

Features

- Basic series
- 8 mm embeddable
- increased operating distance

Connection

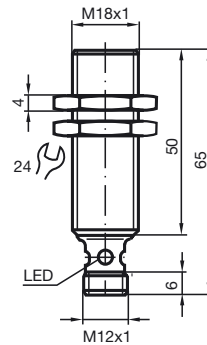


Safety Note



The use of this device in applications, where the safety of persons depends from the devices function, is not allowed!

Dimensions



Technical Data

General specifications

Switching element function	PNP	Make function
Rated operating distance	s_n	8 mm
Installation		embeddable
Output polarity		DC
Assured operating distance	s_a	0 ... 6.48 mm
Reduction factor r_{AI}		0.45
Reduction factor r_{Cu}		0.4
Reduction factor r_{V2A}		0.7

Nominal ratings

Operating voltage	U_B	10 ... 30 V
Switching frequency	f	0 ... 500 Hz
Hysteresis	H	typ. 5 %
Reverse polarity protection		protected against reverse polarity
Short-circuit protection		pulsing
Voltage drop	U_d	≤ 3 V
Operating current	I_L	0 ... 200 mA
Off-state current	I_r	0 ... 0.5 mA typ. 0.1 μ A at 25 °C
No-load supply current	I_0	≤ 15 mA
Indication of the switching state		Multihole-LED, yellow

Standard conformity

Standards	IEC / EN 60947-5-2:2004
-----------	-------------------------

Ambient conditions

Ambient temperature	-25 ... 70 °C (248 ... 343 K)
Storage temperature	-40 ... 85 °C (233 ... 358 K)

Mechanical specifications

Connection type	connector M12 x 1, 4-pin
Housing material	brass, nickel-plated
Sensing face	PBT
Protection degree	IP67

Approvals and certificates

UL approval	cULus Listed, General Purpose
-------------	-------------------------------

Date of issue: 2009-06-18 Data sheet number: 068-13997