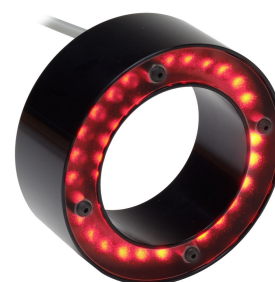


RL1424 Bright Field Ring Light



4i Axial light source designed for non-specular objects.

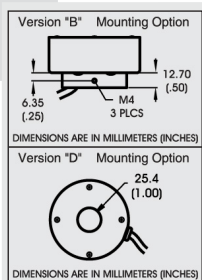
4i Large center opening accommodates lenses up to 55mm.

Ordering Information

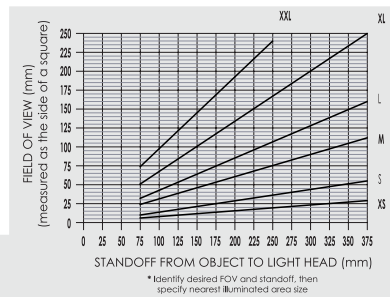
Standard Product:
Shipped Next Day

Standard Product Variation:
Shipped Within Two Weeks

P/N: **RL1424-660100L**
Configured for use with
AI power supply

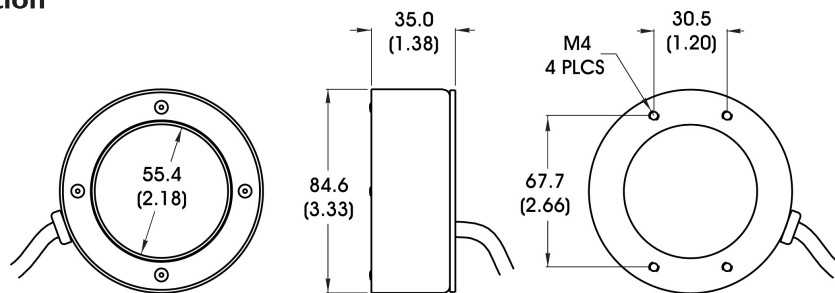


Mounting Option	Spectral Wavelength	Standard Offset	Field of View	Opt. Power Comp.	Opt. Light Cond.
RL1424 - X B D	XXX Blue 470 * Green 520 * Yellow 590 Orange 625 Red 660 Infra-red 880 White WHI *	XXX See chart to Compute standoff	XXX XXL XL L M S XS	XX 12 24	X D P



*Not available in 12v

Dimensional Information



Cable Length: 1.5 Meter (59")

DIMENSIONS ARE IN MILLIMETERS (INCHES)

Standard Variation Current Specifications

	(blue)	(green)	(yellow)	(orange)	(red)	(infra-red)	(white)	(RGB)	
@12v	N/A	N/A	80	80	120	120	N/A	N/A	mA
@24v	80	80	40	40	60	60	80	N/A	mA

Standard Product Information

Product Lifetime: 50,000

Operating Temperature: 0 to 60° C