



MZ F 25

Montageadapter (Edelstahl) für Kontrastsensoren FT 25-W und FT 25-RGB.

Mounting adapter (stainless steel) for FT 25-W and FT 25-RGB contrast sensors.

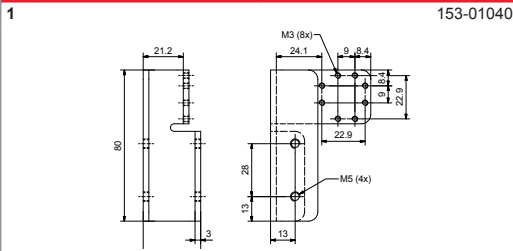
Adaptateur de montage (acier inoxydable) pour capteurs de contraste FT 25-W et FT 25-RGB.

Adaptador de montaje (acero inoxidable) para sensor de contraste FT 25-W y FT 25-RGB.

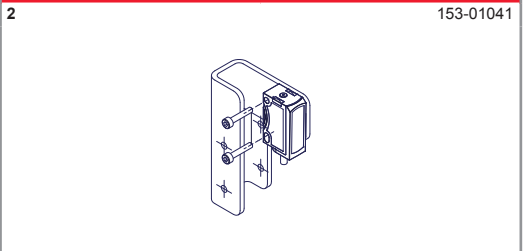
068-14491 31.05.2012-00

www.sensopart.com

A. MASSBILD | DIMENSIONAL DRAWING | PLAN COTES | ESQUEMA DE DIMENSIONES

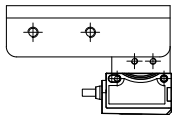


B. MONTAGE | ASSEMBLY | MONTAGE | MONTAJE

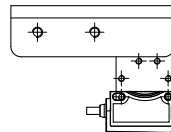


C. LICHTAUSTRITT VERTIKAL | LIGHT EXIT VERTICAL | SORTIE DE LUMIÈRE VERTICALE | SALIDA DE LA LUZ VERTICAL

3 / Fokus 9 mm | Focus 9 mm | Focale 9 mm | Fojo 9 mm

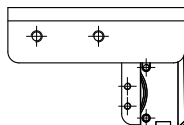


4 / Fokus 18 mm | Focus 18 mm | Focale 18 mm | Fojo 18 mm

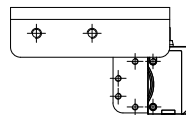


D. LICHTAUSTRITT HORIZONTAL | LIGHT EXIT HORIZONTAL | SORTIE DE LUMIÈRE HORIZONTALE | SALIDA DE LA LUZ HORIZONTAL

5 / Fokus 9 mm | Focus 9 mm | Focale 9 mm | Fojo 9 mm



6 / Fokus 18 mm | Focus 18 mm | Focale 18 mm | Fojo 18 mm



D MONTAGE

Die Halterung mit zwei M5-Schrauben befestigen. Den Sensor mit zwei M3-Schrauben in der gewünschten Position, Lichtaustritt vertikal (Abb. 3, 4) oder Lichtaustritt horizontal (Abb. 5, 6), fixieren.

GB ASSEMBLY

Attach the fixture with two M5 screws. Fix the sensor with two M3 screws in the desired position, light exit vertical (fig. 3, 4) or light exit horizontal (fig. 5, 6).

F MONTAGE

Fixer le support avec deux vis M5. Fixer le capteur avec deux vis M3, sortie de lumière verticale (fig. 3, 4) ou sortie de lumière horizontale (fig. 5, 6) selon la position souhaitée.

E MONTAJE

Sujete el soporte con dos tornillos M5. Sujete el sensor con dos tornillos M3 en la posición deseada. Salida de la luz vertical (fig. 3, 4), salida de la luz horizontal (fig. 5, 6).