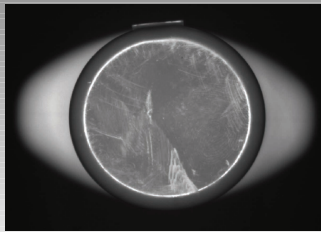


Light Function Diagram

- Axial light source designed for non-specular objects.
- Large center opening accommodates lenses up to 55mm.
- Includes mounting bracket part no. CB100



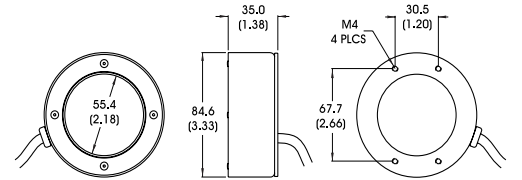
Acquired Solution Image

RL1424 Solution:

In this inspection the RL1424 illuminates the cap and shoulders of a cosmetics bottle. The vision system determines cap orientation based on the location of the hinge, which appears as a dark bar when seen over the light colored bottle, or as a light bar when seen over the black of the conveyor belt. Hinge location dictates placement of the front and back labels.



**RL1424-520
(Shown)**



DIMENSIONS ARE IN MILLIMETERS (INCHES)

General Specifications

Light distribution	+/- 10%
Operating temperature	0 to 65°C
Standard product lifetime	100,000 hrs
Product weight	226.8 g 8.0 oz

**Standard Product
Maximum illumination**

	Working Distance	Watts/cm ²	Lux
Constant Current	100 mm	3.0 mw	2,400
Strobed (100µs)	100 mm	60 mw	48,000

**Standard Variation
Current Specifications**

	(blue)	(green)	(yellow)	(orange)	(red)	(infra-red)	(white)	
@ 12v	N/A	N/A	80	80	120	120	N/A	mA
@ 24v	80	80	40	40	60	60	80	mA

Part Number Designation

Standard Product *SHIPPED NEXT DAY*

Part Number: **RL1424-660100L** (Configured for use with Ai Power Supply)

Standard Product Variation *SHIPPED WITHIN TWO WEEKS*

RL1424 X - XXX XXX XXX XX X

Spectral wavelength: (blue) 470 †, (green) 520 †, (yellow) 590, (orange) 625, (red) 660, (infra-red) 880, (white) WHI †

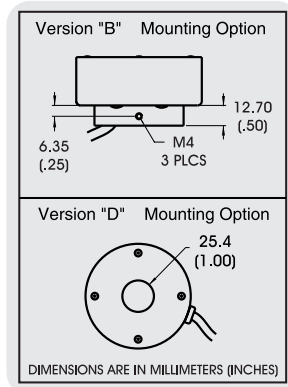
Stand off: XXX

Field of view: XXL, XL, L, M, S, XS

Optional power Compatibility: 12, 24

Optional Light Conditioning: D (Diffuser), P (Polarizer)

See chart to Compute standoff.



† Not available in 12v

