



DVT Part No. IAIR-426

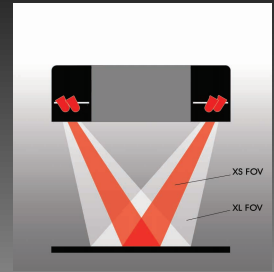
RING LIGHT, 4" O.D., 880nm (INFRA-RED),

AI/DVT Strobe adapter compatible version: Part No. IAIR-425



RL4260-RGB
(Shown)

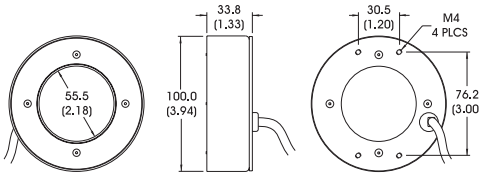
- Ai's workhorse ring light provides significant illumination in a medium sized housing.
- Axial light source designed for non-specular objects
- Available in RGB "all color" version.
- Includes mounting bracket part no. CB092



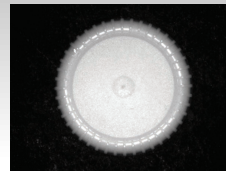
Light Function Diagram

RL4260-RGB Solution:

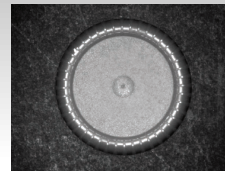
Using the color mixing potential of the RL4260-RGB, this example shows the same red bottle cap as seen by a monochrome camera under three different light colors. The RGB "white" combination shows the red cap as grey against a black background. Seen under red light, the cap appears almost white, and under blue light appears nearly as black as the background.



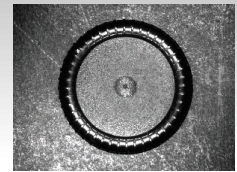
DIMENSIONS ARE IN MILLIMETERS (INCHES)



100% Red Light



100% RGB Light



100% Blue Light

Standard Product Maximum Illumination

	Working Distance	Watts/cm ²	Lux
Constant Current	75mm	7.1 mw	4,200
Strobed (100µs)	75mm	142mw	84,000

General Specifications

Light distribution	+/- 10%
Operating temperature	0 to 65°C
Standard product lifetime	100,000 hrs
Product weight	264.9 g 9.3 oz

Standard Variation Current Specifications

	(blue)	(green)	(yellow)	(orange)	(red)	(infra-red)	(white)	(RGB)
@ 12v	N/A	N/A	240	240	360	420	N/A	N/A
@ 24v	240	240	120	120	180	240	240	250

Part Number Designation

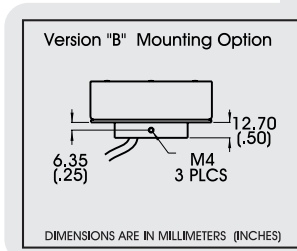
Standard Product

SHIPPED NEXT DAY

Part Number: **RL4260-660100L** (Configured for use with Ai Power Supply)

Standard Product Variation

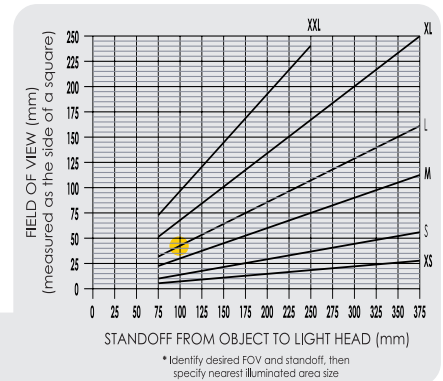
SHIPPED WITHIN TWO WEEKS



DIMENSIONS ARE IN MILLIMETERS (INCHES)

Standard Product	Spectral wavelength	Stand off	Field of view	Optional power Compatibility	Optional Light Conditioning
RL4260	X	XXX	XXX	XX	X
B	(blue) 470 † (green) 520 † (yellow) 590 (orange) 625 (red) 660 (infra-red) 880 (white) WHI † (all color) RGB †	See chart to compute standoff.	XXL XL L M S XS	12 24	D (Diffuser) P (Polarizer)

† Not available in 12v



* Identify desired FOV and standoff, then specify nearest illuminated area size

Have a question?

Call us @ 802.767.3830 or FAX @ 802.767.3831