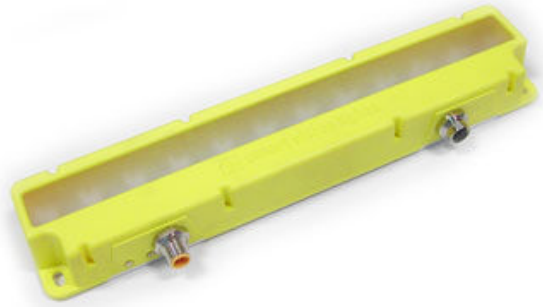


### Over Drive Features

- Connects Directly to Cognex DM300 Reader
- Powered Directly from DM300 External Light Control
- SafeStrobe Technology ensures protected operation of LED's
- Industry Standard M12 Quick Disconnect
- High Speed >> Fast Response



**COGNEX**



Connection	Direct Connect to DM300 – 5 pin M12 jumper “male to female”
Electrical Input	Powered by DM300 – Maximum 500ma draw from DM300
Current	Max 500mAmp draw from DM300
Strobe / Pulse Time	Specified by DM300

## ODDM-L300 – XXX – X\* —» Part Number Key

Product Family:  
Linear Light  
ODDM-L300

Color:  
365, 395, 470, 505,  
530, 590, 625, 850,  
940 & WHI (White)

Lenses:  
Nothing = Narrow (standard)  
W = Wide  
L = Line



Direct connect cables available  
in 1 meter and 2 meter lengths.