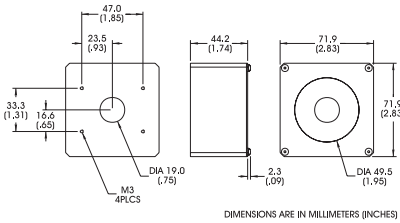
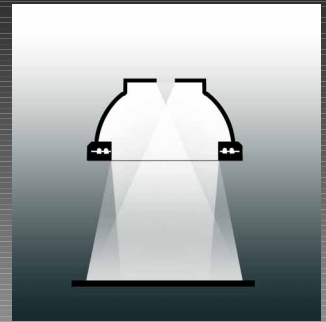




DL2230-520
(Shown)



- A modified, extremely efficient integrating light source.
- Compact, space saving design.
- Ideally suited for inspecting small, specular objects.
- Provides sufficient illumination for OCR of ink jet printing on the bottom of beverage containers.



Light Function Diagram

Product Code Solution

The concave, reflective surface of an aluminum can bottom creates a challenge for an OCR inspection. The DL2230 is well suited for this application, with an opening diameter slightly larger than the diameter of the can, and sufficient diffuse light to evenly illuminate the inkjet printed code without causing glare.



Acquired Solution Image

Standard Product Maximum illumination		Working Distance	Watts/cm ²	Lux	General Specifications					
Constant Current	25mm	25mm	880μW	525	Light distribution	+/- 10%				
Strobed (100μs)	25mm	25mm	17.6mw	10,500	Operating temperature	0 to 65°C				
				Standard product lifetime		100,000 hrs				
Standard Variation Current Specifications		(blue)	(green)	(yellow)	(orange)	(red)	(infra-red)	(white)	Product weight	438.2 g
@ 12v	N/A	N/A	120	120	180	210	N/A	mA	15.5 oz	
@ 24v	120	120	120	120	90	120	120	mA		

Part Number Designation

Standard Product **SHIPPED NEXT DAY**
 Part Number: **DL2230-660** (Configured for use with Ai Power Supply)

Standard Product Variation **SHIPPED WITHIN TWO WEEKS**

