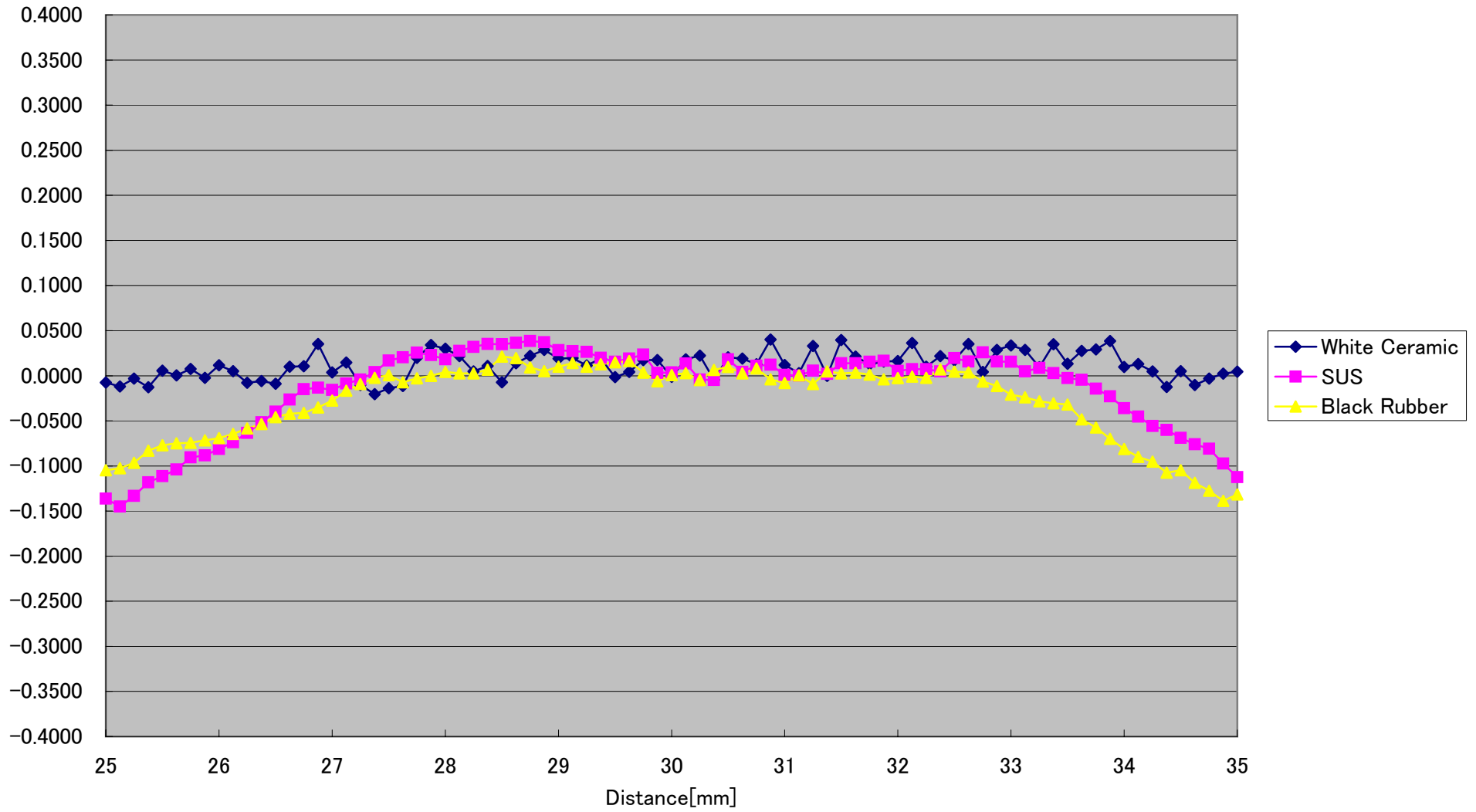
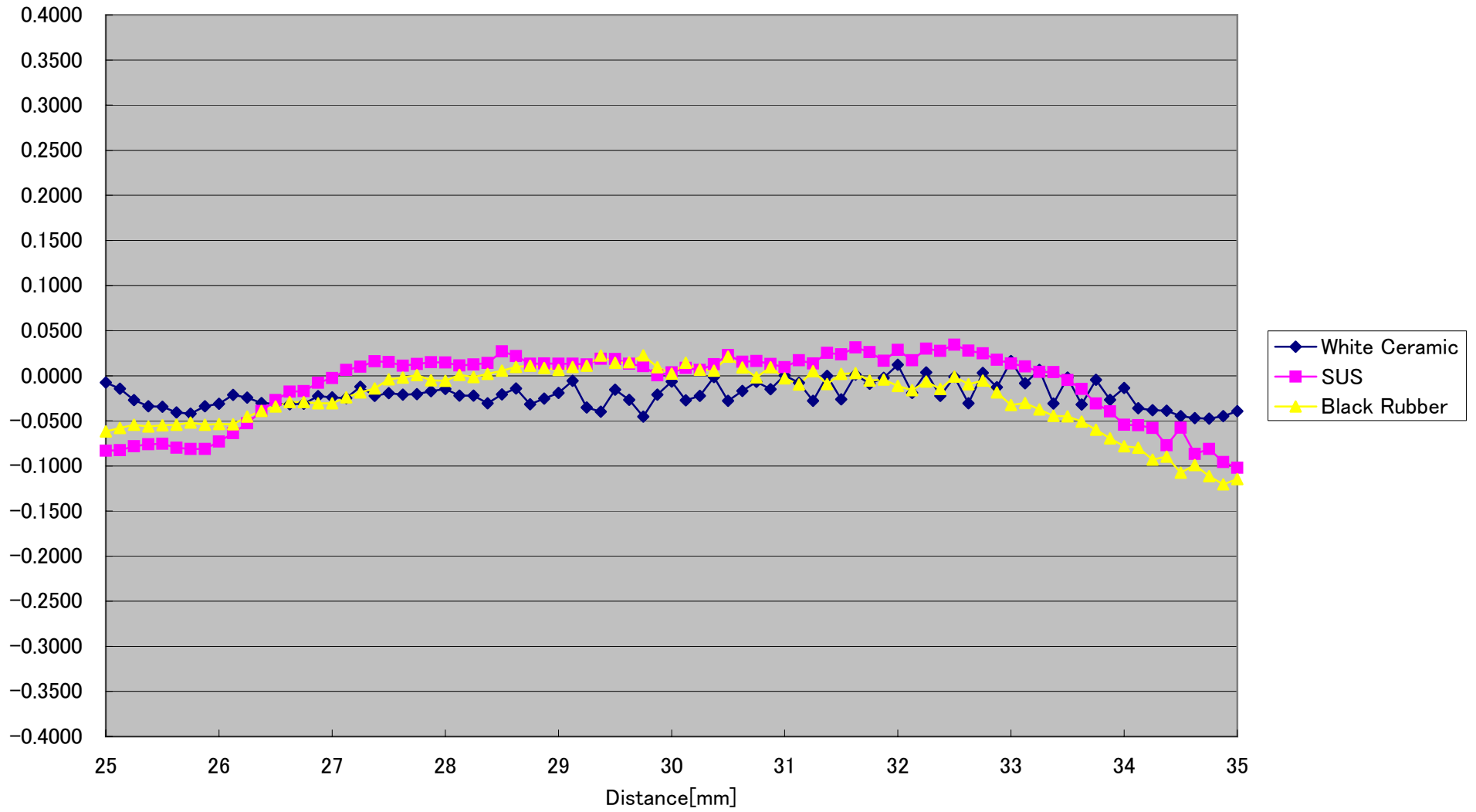


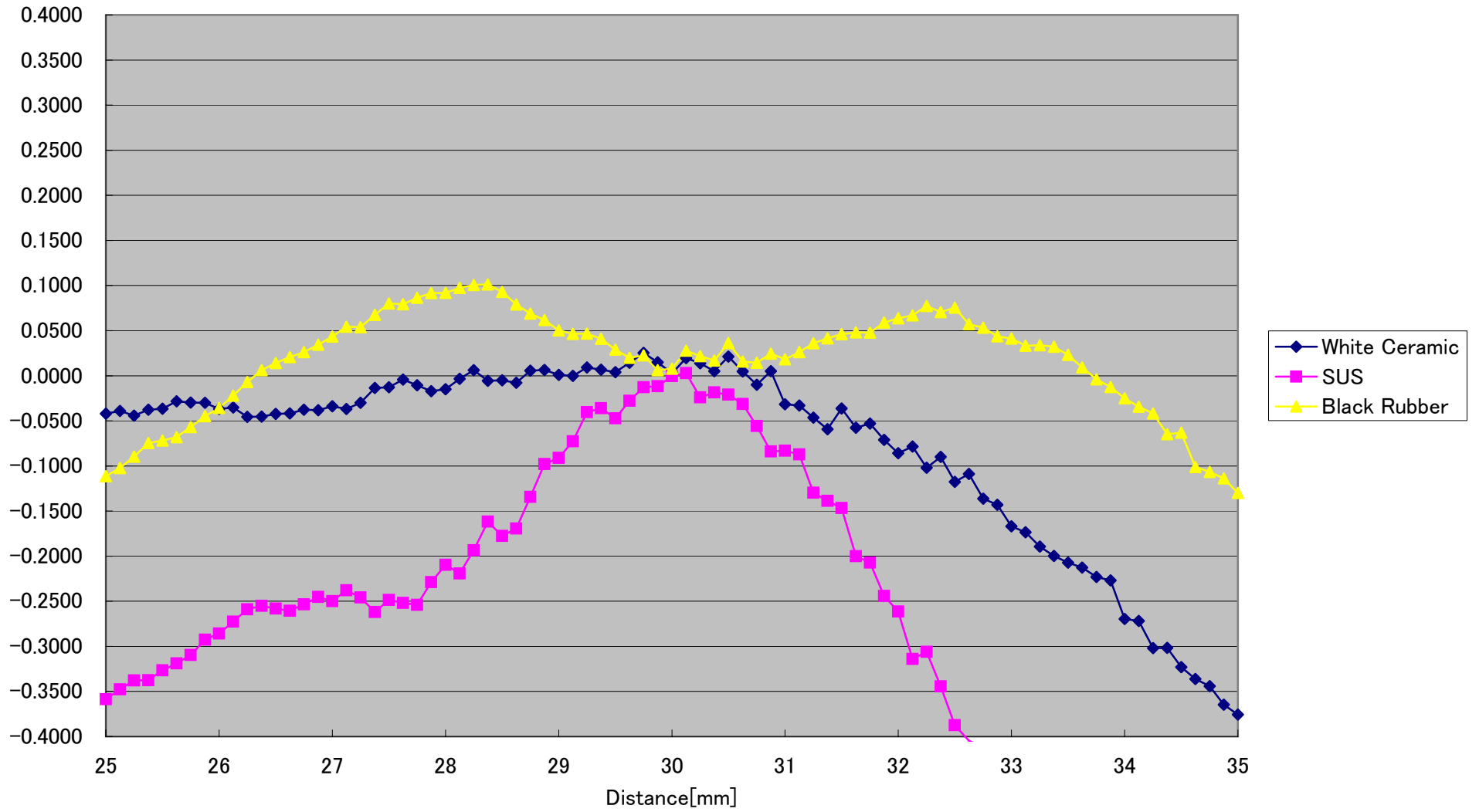
CD5-30-WIDE Linearity($\pm 0^\circ$) [%FS] (Typical)



CD5-30-WIDE Linearity(Vertical -10°) [%FS] (Typical)



CD5-30-WIDE Linearity(Vertical +10°)[%FS] (Typical)



CD5-30-WIDE Linearity(Horizontal 10°)[%FS] (Typical)

