

## Features

- Powered Directly from IS7000 Camera
- 12 High Current LED's
- M12 Quick Disconnect
- Standard optics provide tight focused light
- Narrow and Wide lenses available



**COGNEX**



Connection	Direct Connect to IS7000 Camera
Electrical Input	Supplied by IS7000 Camera – 24VDC - Maximum 12 Watts
Current	Max 500mAmp draw from IS7000
Intensity Control	Variable output of 10% to 100% using potentiometer. Clockwise increases intensity
GREEN Indicator	ON = Power
Yellow Indicator	ON = strobe active / LED's on

## IS7000-L300 – XXX – X\* —» Part Number Key

**Product Family:**  
Linear Light  
IS7000 - L300

**Color:**  
365, 395, 470, 505,  
530, 590, 625, 850,  
940 & WHI (White)

**Lenses:**  
Nothing = Narrow (standard)  
W = Wide  
L = Line

---

## Direct Camera Connection to Light using M12 connection on IS7000 series

The Light cable is used to connect the IS7000 vision system to an external lighting device, providing power and strobe control.

**CAUTION:**

- Cognex cable CBL-M12LTF-0x must be used.

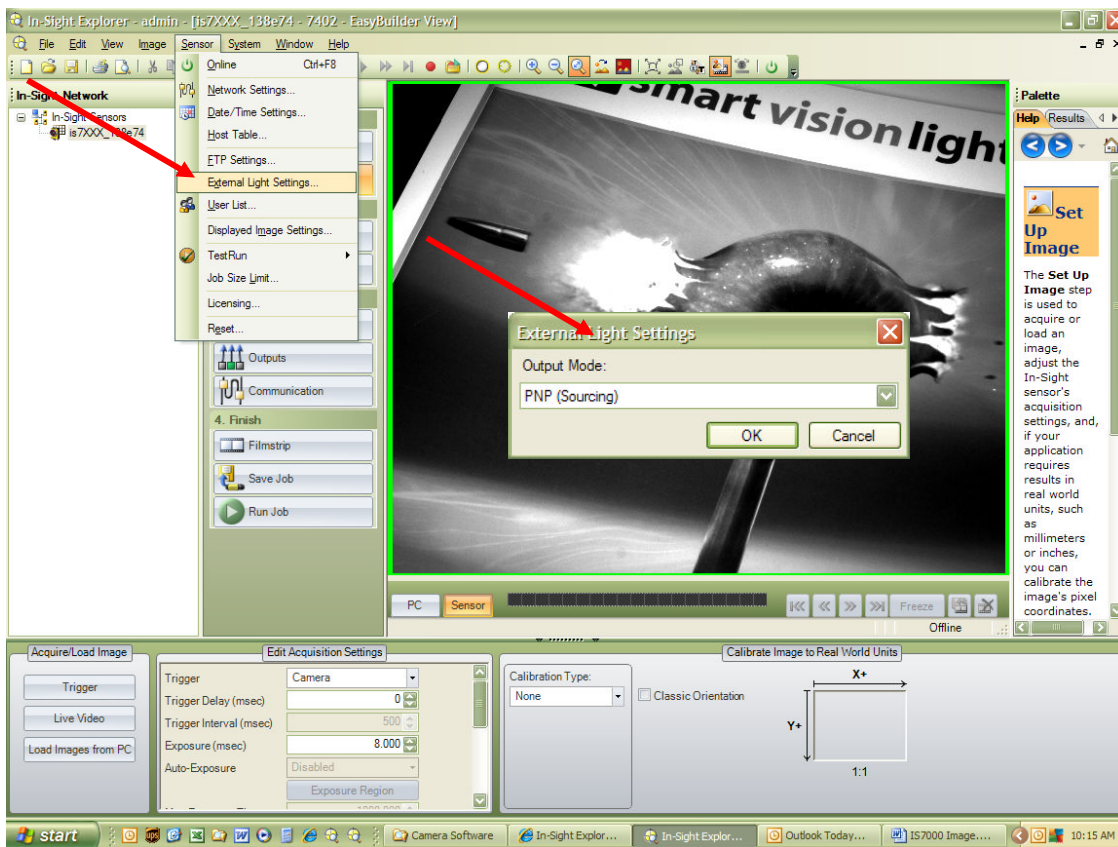
---

Cognex Cables Part Number	Length
CCB-M12LTF-00	0.5 meter
CCB-M12LTF-01	1 meter
CCB-M12LTF-02	2 meter
CCB-M12LTF-05	5 meter



M12 Light Connector

## IS7000 Software Settings



### In-Sight SOFTWARE CONFIGURATION

- Under Sensor set External Light Settings....
- To PNP (Sourcing)
- No additional settings required (Discrete 0 does not need to be set under Discrete Output)

### Light Settings under “Edit Acquisition Settings”

“Edit Acquisition Settings” operate Cognex Internal light. **Note: Settings are inactive when using only external lights.**

