

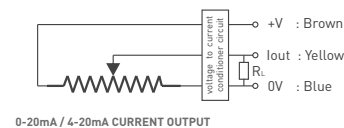
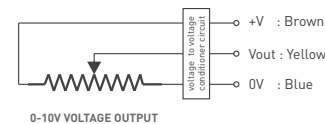
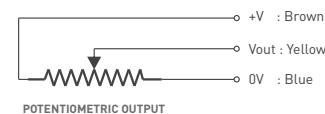
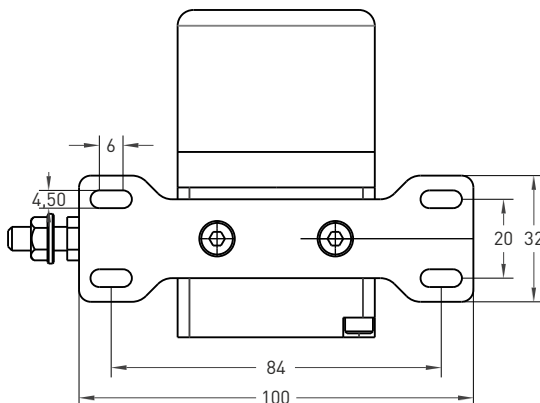
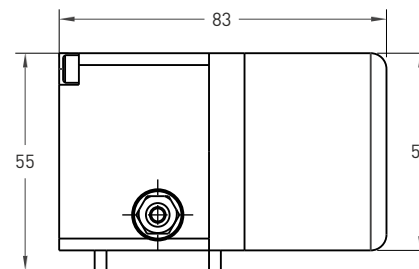
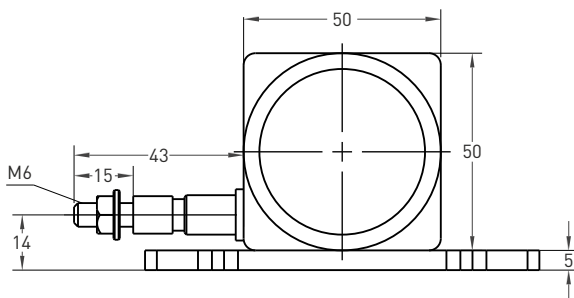
Metal Case Draw Wire Potentiometer

- Measuring strokes 100 ... 1200 mm
- 5 kOhm / 10 kOhm resistive type or with internal voltage / current conditioner circuit
- Easy mounting



| Technical Specifications | |
|--------------------------|---|
| Type of measurement | Resistive |
| Linearity | 0,5% |
| Measurement stroke | 100 ... 1200 mm |
| Output signal type | Voltage divider |
| Output type | Resistive output, 0 - 10 V, 0 - 20 mA veya 4 - 20 mA |
| Supply voltage | 24 VDC max., 15 - 30 V (voltage / current output) |
| Electrical connections | 2,5m kablo (standard) |
| Max. speed | 0,5 m/s |
| Case material | Aluminium |
| Weight | < 500 gr. |
| IP degree | IP 54 |
| Operating temperature | -20°C ... +80°C |
| Storage temperature | -30°C ... +90°C |

Mechanical Specifications



| Model | Case type | Measurement stroke | Linearity | Output | Connector / Cable | Cable output |
|-------|-----------|---|-----------|---|---|--------------|
| DWPM | 1 | 100 | D | 5K | 2M5 | R |
| DWPM | 1 | 100 mm 300 mm 500 mm 700 mm 1200 mm | D: 0,5% | 5K: 5 Ω 10K: 10 Ω V10: 0 - 10 V I 4 : 4 - 20 mA I 20: 0 - 20 mA | 2M5: 2,5 meter cable 5M : 5 meter cable 8M : 8 meter cable 10M: 10 meter cable | R: Radial |