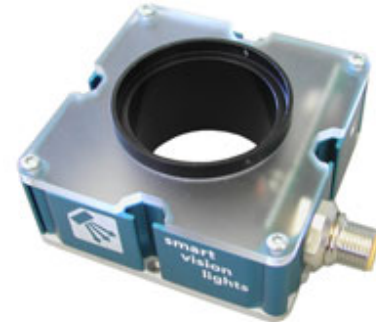


Features

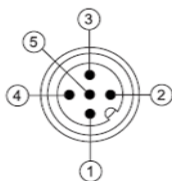


- Ring Light mounts to directly to all models of CCTV lenses
- Adapter Rings for all lens sizes
- Can also be mounted by T-Slot with T-nut
- High Output LED's housed in small industrial housing
- Built in smart driver with NPN & PNP control
- Intensity control by analog 0-10VDC or integrated pot
- Industrial Standard M12 style quick disconnect



Mounts to all CCTV lenses including – Tamron, Fujinon, Goyo, Computar, Pentax & Navitar

Electrical Input	Voltage - 24 VDC +/- 10% Maximum 10 Watts
Analog Intensity	The output is adjustable from 0-100% of brightness by a 0 -10 VDC signal
Dimmable	The output is manually adjustable from 10-100% of brightness by potentiometer
Continuous Mode	Light will be in continuous mode by leaving signal on strobe input
Strobe	PNP ▶ +5VDC or greater to activate. NPN ▶ GND (<1VDC) to activate
Strobe Mode	The Light will operate in either continuous or strobe mode. In strobe mode, the output pulse width will track the pulse width of the strobe pulse.



1 = 24VDC
2 = NPN STROBE
3 = GND
4 = PNP STROBE
5 = 0-10VDC Analog

Standard M12 mating cable color code:

BROWN
WHITE
BLUE
BLACK
*GRAY (GREEN/YELLOW)

* 5 pin Standard M12 mating cable must be used: +VDC must be connected to pin 5 if Analog 0-10 VDC is not used.

R80 – XXX – X* —» Part Number Key

Product Family:
Ring Light
80mm

Color:
625 – Red
White – WHI
470 – Blue
505 – Cyan
530 – Green
IR 850nm
IR 940nm
395nm UV
365nm UV

Lenses:
N - Narrow

* Ring Light come standard with Wide lenses
CE Compliant and RoHS Compliant

Mounting



- Step Up adapter Rings mount lens directly to front of light
- Step Down Adapter Rings mount lens directly to back of light
- T-slots on 4 sides accept industrial T-nuts
- 4 threaded M4 mounting holes
- Small footprint at only 80mm x 80mm

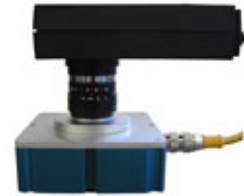
Standard industrial T-slots
on each side accept T-nuts



Front mounting of Lens to
Ring Light



Rear mounting of Lens to
Ring Light



Standard Adapter Kit – Part # SU46-25.5-27

Adapter Kit includes 2 step up rings (25.5 and 27), 6 set screws and hex tool. 6 set screws – 3 for mounting step up ring to light and 3 additional for lens. Some locking thumbscrews may prevent the lens from fitting through the center of the R80, extra low-profile replacement set screws are included, allowing the protruding thumbscrews to be removed.

