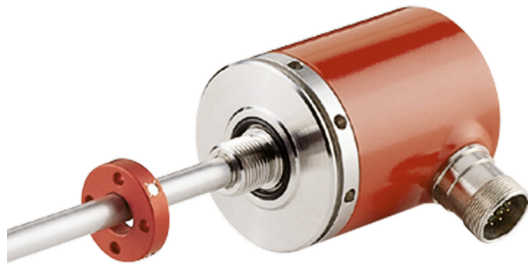


Linear-Transducer LA66K - Start/Stop



Ref.: K-LA66-SS-1

18.11.2013

0102010060

Advantages

- _ Customer-specific solutions
- _ Further interfaces available
- _ Measures linear movements
- _ Perfect fit for cylinders
- _ Pressure proof tube housing
- _ Wear-free detection

General Data

Supply	
- Supply voltage	15...27 VDC
- Optional	± 15 VDC
- Optional	24 VDC
Current consumption no load	<= 100 mA
Measuring principle	magnetostrictive
Measuring length, standard	150...3000 mm, in steps
Resolution	according to evaluation unit
Linearity deviation	< 0.05 %
Reproducibility	0.01 mm
Hysteresis	0.1 mm
Temperature coefficient	< 8 µm/°C <= 500 mm < 15 ppm/°C > 500 mm
Straight line velocity	no restrictions
Mounting position	no restrictions
Material - Measuring body	Cr/Ni - alloy
Rod end mounting	Option
Magnet	T4-M33 other on request
Start-Stop - Interface	
- Cable length, TTL	<= 15 m

Subject to change.

TR-Electronic GmbH
Eglshalde 6
78647 Trossingen
Tel. +49 (0) 7425 228-0
info@tr-electronic.de
www.tr-electronic.de

Linear-Transducer LA66K - Start/Stop

Ref.: K-LA66-SS-1

18.11.2013

0102010060

General Data continuation

- Cable length, RS-422	<= 500 m
- External evaluation unit	TR-Modules, e.g. AK-8
- External evaluation unit	SIEMENS IP 241
- External evaluation unit	PHILIPS 9404 4620 0301
- External evaluation unit	Bernecker + Rainer
- External evaluation unit	Harms and Wende
Cycle time, internal	see dimensional drawing
External inputs	
- Start-Signal, TTL	High active, 470 Ohm
- Start-Signal, RS422	Differential input
External outputs	
- Stop-Signal, TTL	High active, 220 Ohm
- Stop-Signal, RS422	Differential output

Environmental conditions

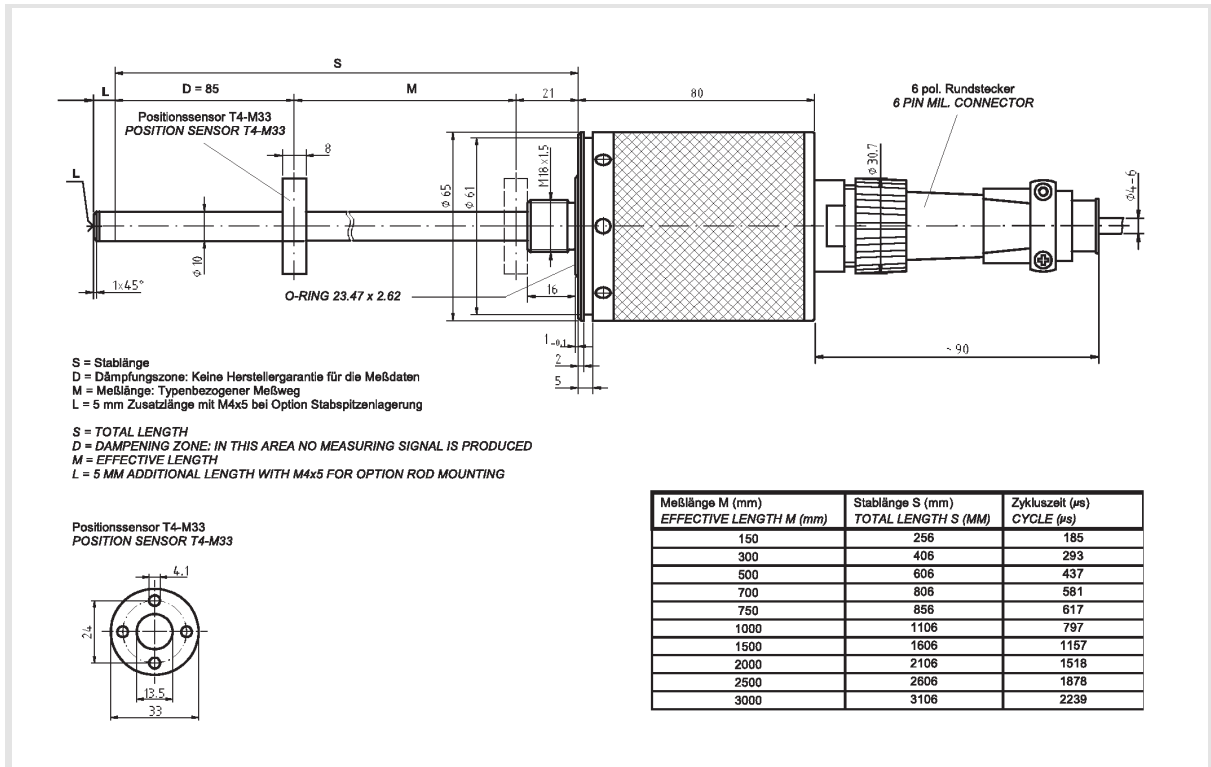
Vibration	
- Specific value	<= 100 m/s ²
- Sine	50...2000 Hz
Shock	
- Specific value	<= 1000 m/s ²
- Half sine	11 ms
Immunity to disturbance	DIN EN 61000-6-2
Transient emissions	DIN EN 61000-6-3
Working temperature	
- Standard	0...+70 °C
- Optional	-20...+70 °C;
Storage temperature, dry	-30...+85 °C
Relative humidity	98 %, non condensing
Protection class	
- Standard	IP65
Stray magnetic field	< 3 mT
Measuring reference	Measuring plane
Pressure resistance	
- Optional	600 bar, static

Subject to change.

Linear-Transducer LA66K - Start/Stop

Ref.: K-LA66-SS-1
 18.11.2013
 0102010060

Dimensional drawing



Subject to change.

TR-Electronic GmbH
 Eglshalde 6
 78647 Trossingen
 Tel. +49 (0) 7425 228-0
 info@tr-electronic.de
www.tr-electronic.de