



*Your future's safe!*



# PI-Safe

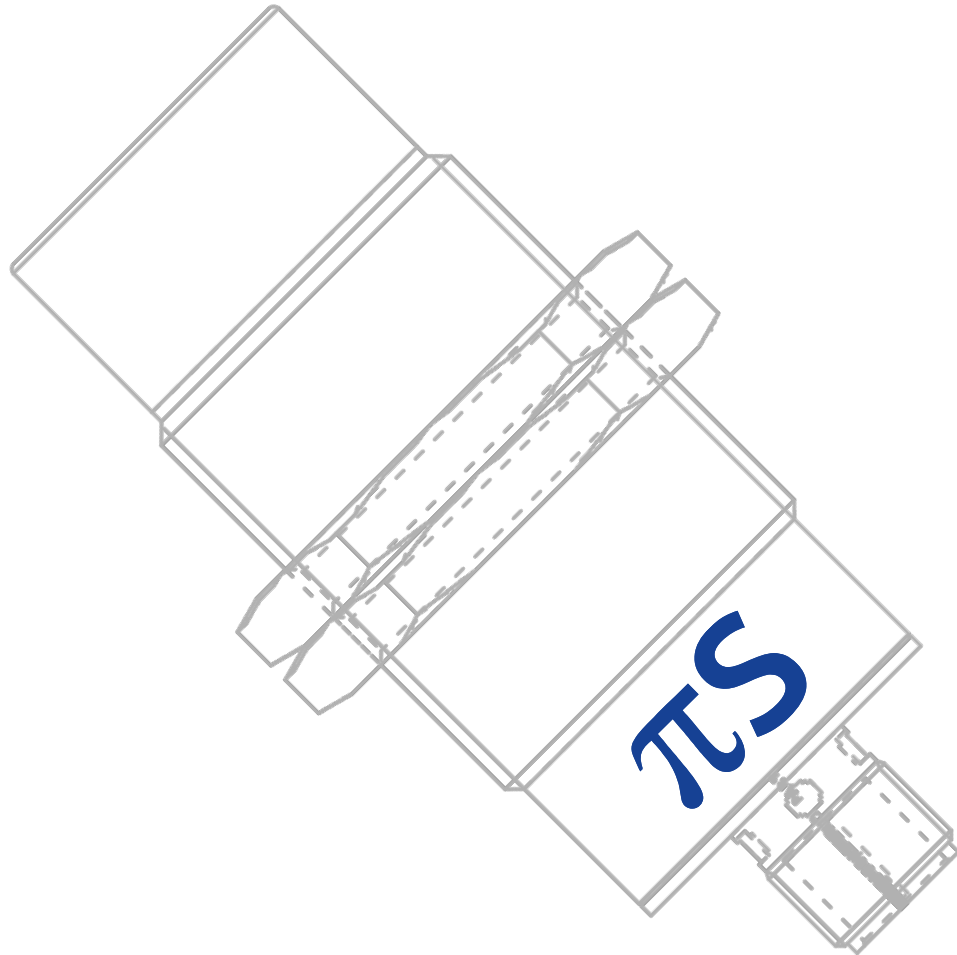
Inductive safety sensors



# PI-Safe



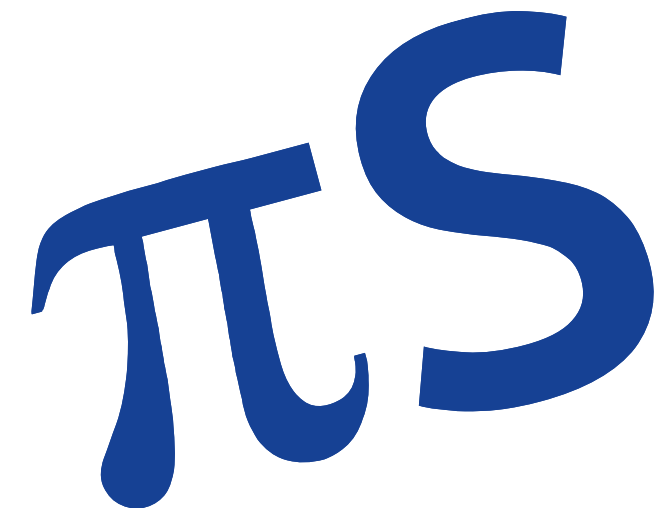
# A complete range of sensors for positioning detection



## Features

- Certification to EN 60947-5-3
- Ensuring operator and machine safety
- No special actuator required
- Connection to a Safety PLC or Safety Controller





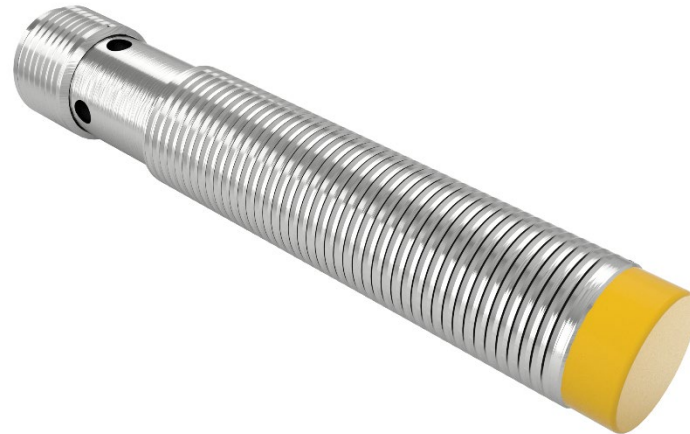
## PI-Safe

- PI-Safe safety sensors increase the uptime and safety of installations and can be connected to approved evaluation units without cross-fault monitoring
- PI-Safe can generally be installed in all those applications that require a non-contact and safe detection of a metal object
- Applications include reliable positioning on rotary indexing tables and machine tools, safe triggering of slow travel or switching off in end positions for presses, gantry robots and actuators
- Wear-free operation guarantees low maintenance costs. Faults such as coil break or coil short circuit are diagnosed switching the sensor into the defined safe state. Even a cross fault between the supply voltage and one of the two outputs does not affect the safety function of the sensor



- Protection grade
  - IP 65 and IP 67
- Operating temperature
  - -25...70 °C
- Display
  - Operation: green LED; Signal: yellow LED
- Protection class
  - III
- Product designation
  - Fail-safe inductive sensor
- Output
  - 2 x OSSD
- Voltage type and Electrical design
  - DC PNP
- Connection
  - M12 4-pole connector

- Cylindrical
- M12 x 1 / L = 70 mm
- Non-flush mounted



### Characteristics

- Enable zone
  - 0.5...4 mm
- Operating voltage DC
  - 19.2...30 V
- Current rating
  - 100 mA
- Materials
  - Body: stainless steel; Head: PBT
- Classification
  - SIL2 / PLd

- Cylindrical
- M18 x 1 / L = 70,5 mm
- Non-flush mounted

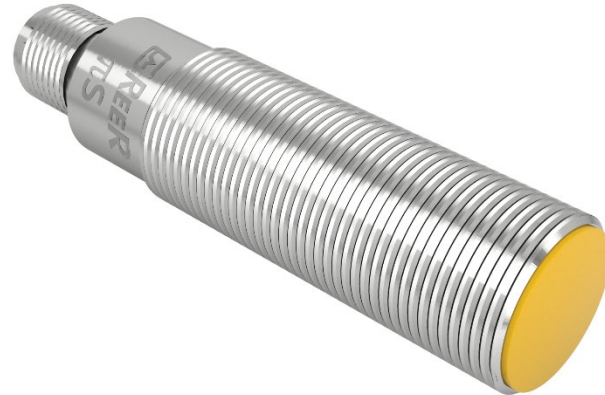


### Characteristics

- Enable zone
  - 1...8 mm
- Operating voltage DC
  - 19.2...30 V
- Current rating
  - 100 mA
- Materials
  - Body: stainless steel; Head: PBT
- Classification
  - SIL2 / PLd



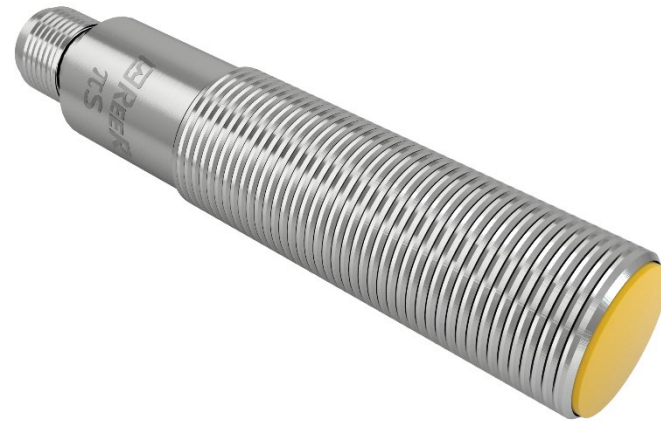
- Cylindrical
- M18 x 1 / L = 70 mm
- Flush mounted



### Characteristics

- Enable zone
  - 1...5 mm
- Operating voltage DC
  - 19.2...30 V
- Current rating
  - 100 mA
- Materials
  - Body: brass white bronze coated; Head: PBT
- Classification
  - SIL2 / PLd

- Cylindrical
- M18 x 1 / L = 86.5 mm
- Flush mounted



### Characteristics

- Enable zone
  - > 10 mm
- Operating voltage DC
  - 10...30 V
- Current rating
  - 50 mA
- Materials
  - Body: brass white bronze coated; Head: PBT
- Classification
  - SIL2 / PLd

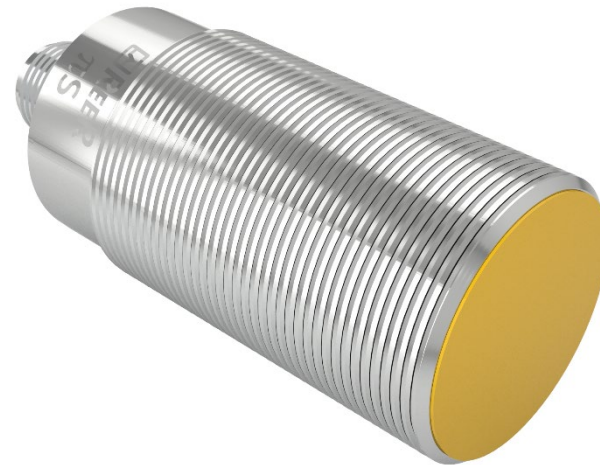
- Cylindrical
- M30 x 1.5 / L = 70 mm
- Non-flush mounted



### Characteristics

- Enable zone
  - 1...15 mm
- Operating voltage DC
  - 19.2...30 V
- Current rating
  - 100 mA
- Materials
  - Body: stainless steel; Head: PBT
- Classification
  - SIL2 / PLd

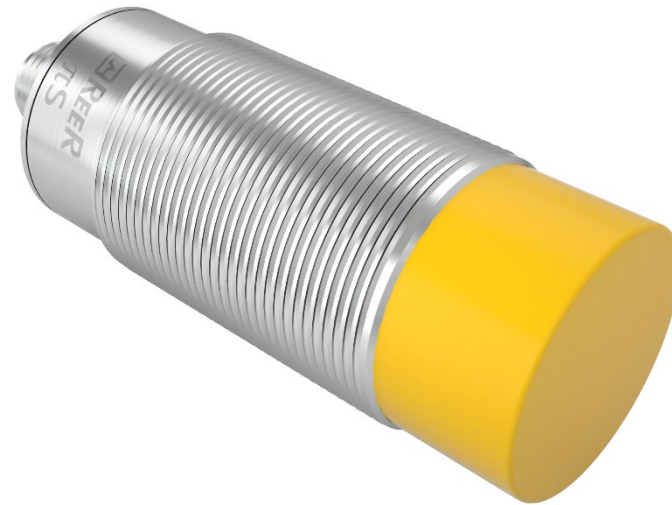
- Cylindrical
- M30 x 1.5 / L = 70 mm
- Flush mounted



### Characteristics

- Enable zone
  - 1...10 mm
- Operating voltage DC
  - 19.2...30 V
- Current rating
  - 100 mA
- Materials
  - Body: brass white bronze coated; Head: PBT
- Classification
  - SIL2 / PLd

- Cylindrical
- M30 x 1.5 / L = 80 mm
- Non-flush mounted
- IP69K



### Characteristics

- Enable zone
  - 6...12 mm
- Operating voltage DC
  - 19.2...30 V
- Current rating
  - 100 mA
- Materials
  - Body: stainless steel; Head: PBT
- Classification
  - SIL3 / PLe

# PI-Safe

## Product range

PI SQ F-NF

- Cubic
- 40 x 40 x 66 mm
- Flush/Non-flush mounted



### Characteristics

- Enable zone
  - 10...15 mm
- Operating voltage DC
  - 19.2...30 V
- Materials
  - Body: diecast zinc; Head: PPE
- Classification
  - SIL3 / PLe

# PI-Safe

## Product range

PI SQ NF

- Cubic
- 40 x 40 x 66 mm
- Non-flush mounted



### Characteristics

- Enable zone
  - 4...20 mm
- Operating voltage DC
  - 19.2...30 V
- Materials
  - Body: diecast zinc; Head: PPE
- Classification
  - SIL3 / PLe



# Accessories



# Angle brackets

For mounting cylindrical sensors

- Easy, quick and inexpensive fixing
- Robust stainless steel design for use in harsh industrial environments
- For free-standing mounting

M12 Angle bracket



M18 Angle bracket



M30 Angle bracket



# Mounting clamps

For mounting cylindrical sensors

- End stop for defined installation position
- Safe fixing of the sensor with click-fit mounting
- Easy, quick and inexpensive fixing
- Reliable mounting on a surface by means of two screws

M12 Mounting clamp



M18 Mounting clamp



M30 Mounting clamp





*Your future's safe!*

Thank you.