

Linear-Transducer LA41 - ISI



Ref.: K-LA41-ISI-1

18.11.2013

0102010030

Advantages

- _ Customer-specific solutions
- _ Flexible programming
- _ Further interfaces available
- _ Housing length: 65 mm
- _ Measures linear movements
- _ Perfect fit for cylinders
- _ Pressure proof tube housing
- _ Wear-free detection

General Data

| | |
|-----------------------------|---|
| Supply | |
| - Supply voltage | 24 VDC, -20...+10 % |
| Current consumption no load | <= 250 mA |
| Measuring principle | magnetostrictive |
| Measuring length, standard | 150...3000 mm, in steps |
| Resolution | 0.01 mm |
| Linearity deviation | < 0.05 % |
| Reproducibility | 0.01 mm |
| Hysteresis | 0.1 mm |
| Temperature coefficient | < 8 $\mu\text{m}/^\circ\text{C}$ <= 500 mm < 15 ppm/ $^\circ\text{C}$ > 500 mm |
| Straight line velocity | 1 m/s, Resolution = 0.01 mm |
| Mounting position | no restrictions |
| Material - Measuring body | Cr/Ni - alloy |
| Rod end mounting | Option |
| Magnet | T4-M33 other on request |
| Incremental - Interface | |
| - Load frequency | 4...120 kHz |
| - Incremental signals | K1 \pm K2 \pm |
| - Output driver, TTL | RS-422, 5 VDC |

Subject to change.

TR-Electronic GmbH
Eglisshalde 6
78647 Trossingen
Tel. +49 (0) 7425 228-0
info@tr-electronic.de
www.tr-electronic.de

Linear-Transducer LA41 - ISI

Ref.: K-LA41-ISI-1

18.11.2013

0102010030

General Data continuation

| | |
|--------------------------------|---------------------------|
| - Output driver, HTL | Push-Pull, 11...27 VDC |
| Parameter/Function, changeable | Resolution |
| | Load frequency |
| | Preset parameter |
| Type of parametrization | programmable |
| Prgramming - Tool | TR-Tool: PT-100-N |
| Cycle time, internal | see dimensional drawing |
| External inputs | |
| - Preset | electronic adjustment |
| - Load input | Load absolute position |
| - Logic level | "0" < +2V, "1" = Supply |
| External outputs | |
| - Load output | ISI Load process finished |

Environmental conditions

| | |
|--------------------------|---------------------------|
| Vibration | |
| - Specific value | $\leq 100 \text{ m/s}^2$ |
| - Sine | 50...2000 Hz |
| Shock | |
| - Specific value | $\leq 1000 \text{ m/s}^2$ |
| - Half sine | 11 ms |
| Immunity to disturbance | DIN EN 61000-6-2 |
| Transient emissions | DIN EN 61000-6-3 |
| Working temperature | |
| - Standard | 0...+70 °C |
| - Optional | -20...+70 °C; |
| Storage temperature, dry | -30...+85 °C |
| Relative humidity | 98 %, non condensing |
| Protection class | |
| - Standard | IP65 |
| Stray magnetic field | < 3 mT |
| Measuring reference | Measuring plane |
| Pressure resistance | |
| - Optional | 600 bar, static |

Subject to change.

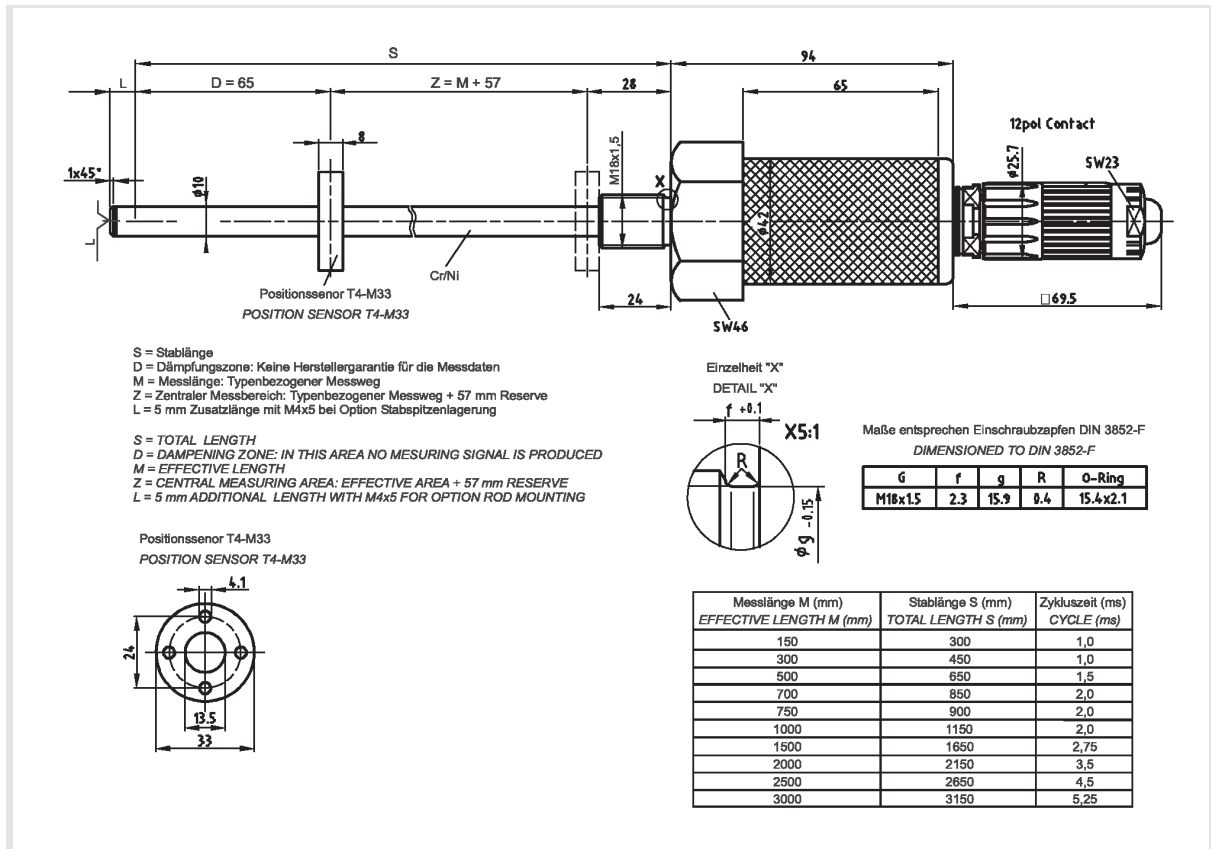
Linear-Transducer LA41 - ISI

Ref.: K-LA41-ISI-1

18.11.2013

0102010030

Dimensional drawing



Subject to change.