

## Linear-Transducer LP38 - ISI

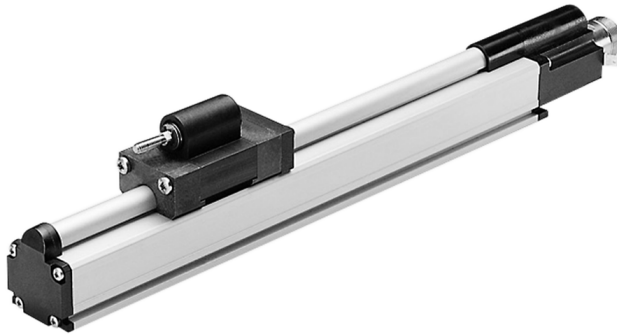
Ref.: K-LP38-ISI-1

14.11.2013

0102010120

### Advantages

- \_ Customer-specific solutions
- \_ Flexible programming
- \_ Further interfaces available
- \_ Measures linear movements
- \_ Profile housing
- \_ Simple integration
- \_ Wear-free detection



### General Data

Supply	
- Supply voltage	24 VDC, -20...+10 %
Current consumption no load	<= 250 mA
Measuring principle	magnetostrictive
Measuring length, standard	150...3000 mm, in steps
Resolution	0.01 mm
Linearity deviation	< 0.05 %
Reproducibility	0.01 mm
Hysteresis	0.1 mm
Temperature coefficient	< 8 $\mu\text{m}/^\circ\text{C}$ <= 500 mm < 15 ppm/ $^\circ\text{C}$ > 500 mm
Straight line velocity	1 m/s, Resolution = 0.01 mm
Mounting position	no restrictions
Material - Measuring body	Aluminium extruded profile
Magnet	T4-U3820 other on request
Incremental - Interface	
- Load frequency	4...120 kHz
- Incremental signals	K1 $\pm$ K2 $\pm$
- Output driver, TTL	RS-422, 5 VDC
- Output driver, HTL	Push-Pull, 11...27 VDC

Subject to change.

TR-Electronic GmbH  
 Eglisshalde 6  
 78647 Trossingen  
 Tel. +49 (0) 7425 228-0  
 info@tr-electronic.de  
[www.tr-electronic.de](http://www.tr-electronic.de)

## Linear-Transducer LP38 - ISI

Ref.: K-LP38-ISI-1

14.11.2013

0102010120

### General Data continuation

Parameter/Function, changeable	Resolution
	Load frequency
	Preset parameter
Type of parametrization	programmable
Programming - Tool	TR-Tool: PT-100-N
External inputs	
- Preset	electronic adjustment
- Load input	Load absolute position
- Logic level	"0" < +2V, "1" = Supply

### Environmental conditions

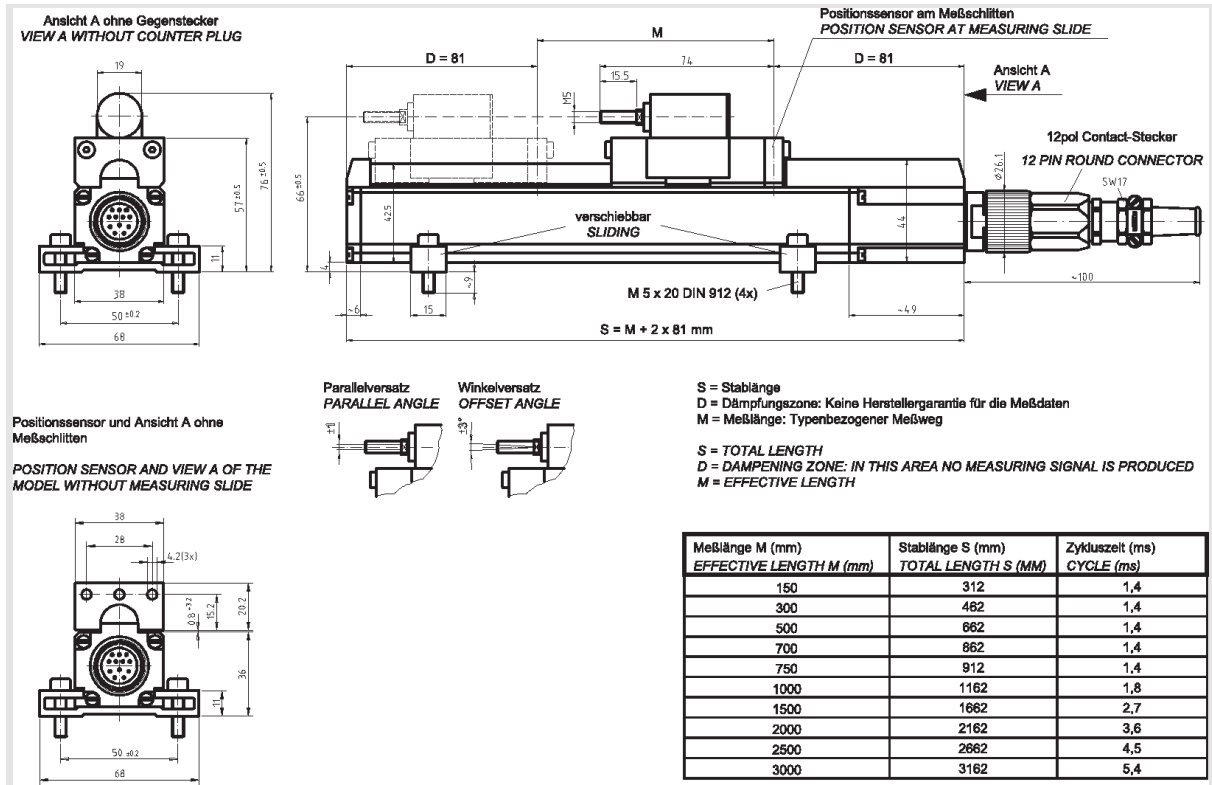
Vibration	
- Specific value	$\leq 100 \text{ m/s}^2$
- Sine	50...2000 Hz
Shock	
- Specific value	$\leq 1000 \text{ m/s}^2$
- Half sine	11 ms
Immunity to disturbance	DIN EN 61000-6-2
Transient emissions	DIN EN 61000-6-3
Working temperature	
- Standard	0...+70 °C
- Optional	-20...+70 °C;
Storage temperature, dry	-30...+85 °C
Relative humidity	98 %, non condensing
Protection class	
- Standard	IP65
Stray magnetic field	< 3 mT
Measuring reference	Measuring plane

Subject to change.

# Linear-Transducer LP38 - ISI

Ref.: K-LP38-ISI-1  
 14.11.2013  
 0102010120

## Dimensional drawing



Subject to change.