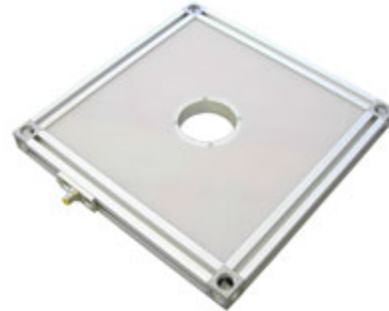
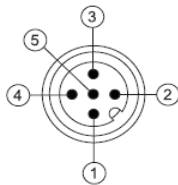


Features

- Large LED Diffuse Ring Light with Thin profile
- M12 Quick Disconnect
- Driver built in – No External wiring to a driver
- Continuous operation or Strobe mode
- Analog intensity via 0-10VDC signal
- PNP and NPN Strobe input



Electrical Input	Voltage - 24 VDC +/- 5% Maximum 75 Watts
Analog Intensity	The output is adjustable from 10-100% of brightness by a 0 -10 VDC signal
Continuous Mode	Light will be in continuous mode by leaving signal on strobe input
Strobe	PNP ▶ +5VDC or greater to activate. NPN ▶ GND (<1VDC) to activate
Strobe Mode	The Light will operate in either continuous or strobe mode. In strobe mode, the output pulse width will track the pulse width of the strobe pulse.



1 = 24VDC
 2 = NPN STROBE
 3 = GND
 4 = PNP STROBE
 5 = 0-10VDC Analog

Standard M12 mating cable color code:

BROWN
 WHITE
 BLUE
 BLACK
 *GRAY (GREEN/YELLOW)

* 5 pin Standard M12 mating cable must be used: +VDC must be connected to pin 5 if Analog 0-10 VDC is not used.

DLP-300x300 – XXX –» Part Number Key

Product Family:
 Diffuse Ring Light
 DLP 300mm x 300mm

Color:
 625 – Red
 White – WHI
 470 – Blue
 530 – Green
 IR 850nm