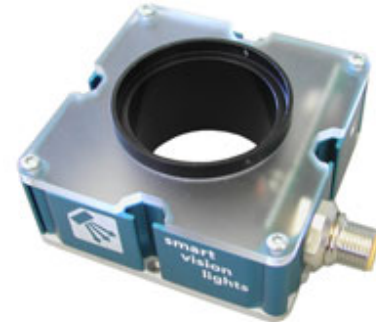


Features

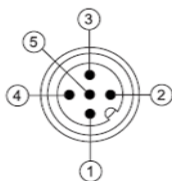


- Ring Light mounts to directly to all models of CCTV lenses
- Adapter Rings for all lens sizes
- Can also be mounted by T-Slot with T-nut
- High Output LED's housed in small industrial housing
- Built in smart driver with NPN & PNP control
- Intensity control by analog 0-10VDC or integrated pot
- Industrial Standard M12 style quick disconnect



Mounts to all CCTV lenses including – Tamron, Fujinon, Goyo, Computar, Pentax & Navitar

| | |
|------------------|--|
| Electrical Input | Voltage - 24 VDC +/- 10% Maximum 10 Watts |
| Analog Intensity | The output is adjustable from 0-100% of brightness by a 0 -10 VDC signal |
| Dimmable | The output is manually adjustable from 10-100% of brightness by potentiometer |
| Continuous Mode | Light will be in continuous mode by leaving signal on strobe input |
| Strobe | PNP ▶ +5VDC or greater to activate. NPN ▶ GND (<1VDC) to activate |
| Strobe Mode | The Light will operate in either continuous or strobe mode. In strobe mode, the output pulse width will track the pulse width of the strobe pulse. |



1 = 24VDC
2 = NPN STROBE
3 = GND
4 = PNP STROBE
5 = 0-10VDC Analog

Standard M12 mating cable color code:

BROWN
WHITE
BLUE
BLACK
*GRAY (GREEN/YELLOW)

* 5 pin Standard M12 mating cable must be used: +VDC must be connected to pin 5 if Analog 0-10 VDC is not used.

R80 – XXX – X* —» Part Number Key

Product Family:
Ring Light
80mm

Color:
625 – Red
White – WHI
470 – Blue
505 – Cyan
530 – Green
IR 850nm
IR 940nm
395nm UV
365nm UV

Lenses:
N - Narrow

* Ring Light come standard with Wide lenses
CE Compliant and RoHS Compliant

Mounting



- Step Up adapter Rings mount lens directly to front of light
- Step Down Adapter Rings mount lens directly to back of light
- T-slots on 4 sides accept industrial T-nuts
- 4 threaded M4 mounting holes
- Small footprint at only 80mm x 80mm

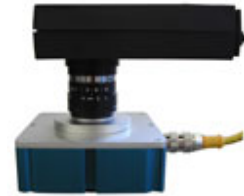
Standard industrial T-slots
on each side accept T-nuts



Front mounting of Lens to
Ring Light



Rear mounting of Lens to
Ring Light



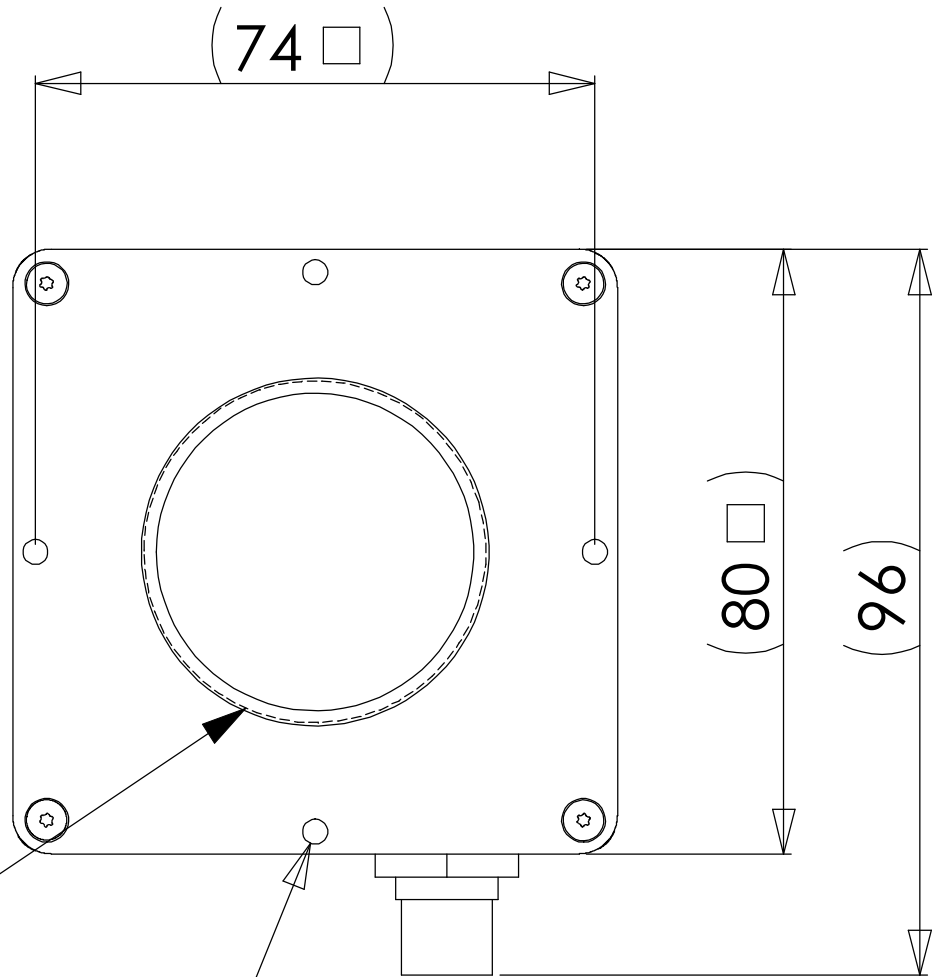
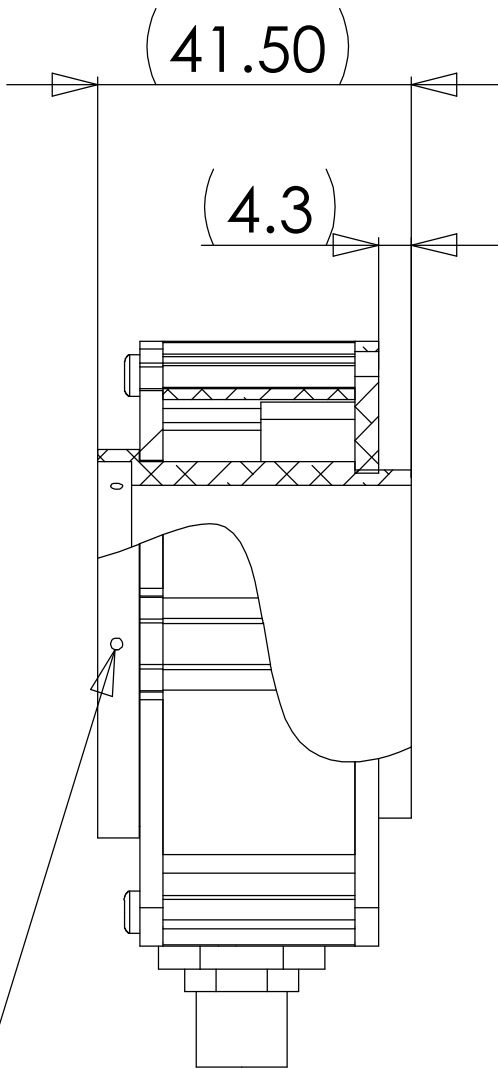
Standard Adapter Kit – Part # SU46-25.5-27

Adapter Kit includes 2 step up rings (25.5 and 27), 6 set screws and hex tool. 6 set screws – 3 for mounting step up ring to light and 3 additional for lens. Some locking thumbscrews may prevent the lens from fitting through the center of the R80, extra low-profile replacement set screws are included, allowing the protruding thumbscrews to be removed.



8 7 6 5 4 3 2 1

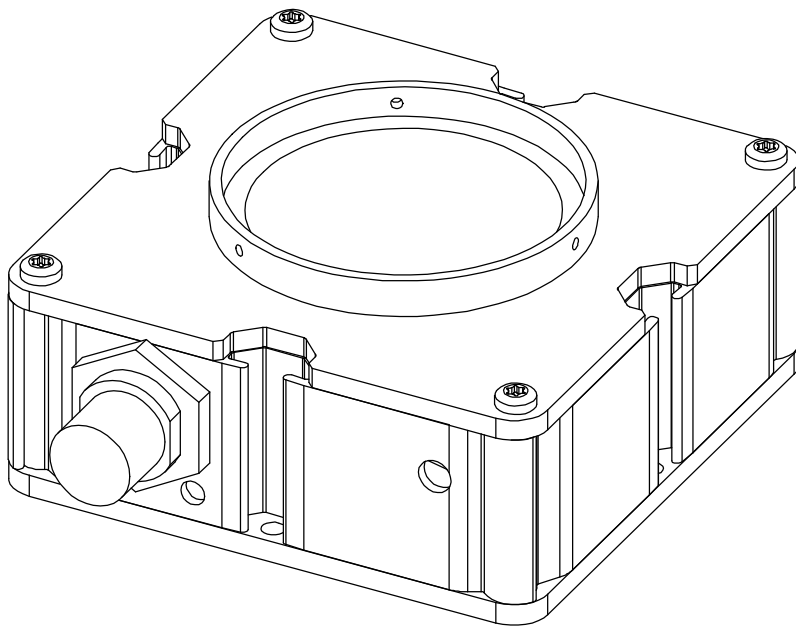
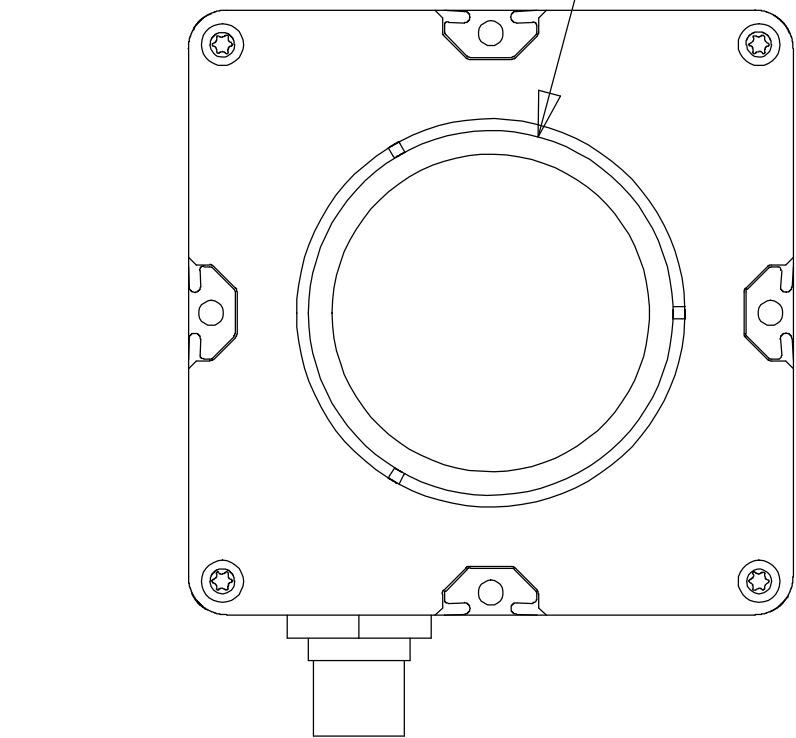
Ø 42 THRU
 □ Ø 48.25 ▽ 4.50



M46 X .75
 THREAD

3X EQUALLY SPACED
 M2x0.4 - 6H

4 x Ø 3.30 THRU ALL
 M4x0.7 - 6H THRU ALL



PROPRIETARY AND CONFIDENTIAL
 THE INFORMATION CONTAINED IN THIS
 DRAWING IS THE SOLE PROPERTY OF
 SmartVisionLights. ANY
 REPRODUCTION IN PART OR AS A WHOLE
 WITHOUT THE WRITTEN PERMISSION OF
 SmartVisionLights IS PROHIBITED.

| | | | | | | | |
|-------------|---------|--------------------------------------|--|-----------|-----------|----------------------------|-----------|
| | | UNLESS OTHERWISE SPECIFIED: | | DATE | NAME | R80-LIGHT | |
| | | DIMENSIONS ARE IN MM | | DRAWN BY | 9/15/2009 | SmartVisionLights.Com | |
| | | TOLERANCES: | | CHECKED | | matt@smartvisionlights.com | |
| | | FRACTIONAL ±1-64 | | ENG APPR. | | SIZE | DWG. Name |
| | | ANGULAR: MACH ±.25° BEND ±3° | | MFG APPR. | | B | R80-LIGHT |
| | | TWO PLACE DECIMAL ±.10 mm | | Q.A. | | SCALE: 1:1 | REV |
| | | THREE PLACE DECIMAL ±.01 mm | | COMMENTS: | | | |
| | | INTERPRET GEOMETRIC TOLERANCING PER: | | | | | |
| | | MATERIAL | | | | | |
| NEXT ASSY | USED ON | FINISH | | | | | |
| APPLICATION | | | | | | | |

8 7 6 5 4 3 2 1