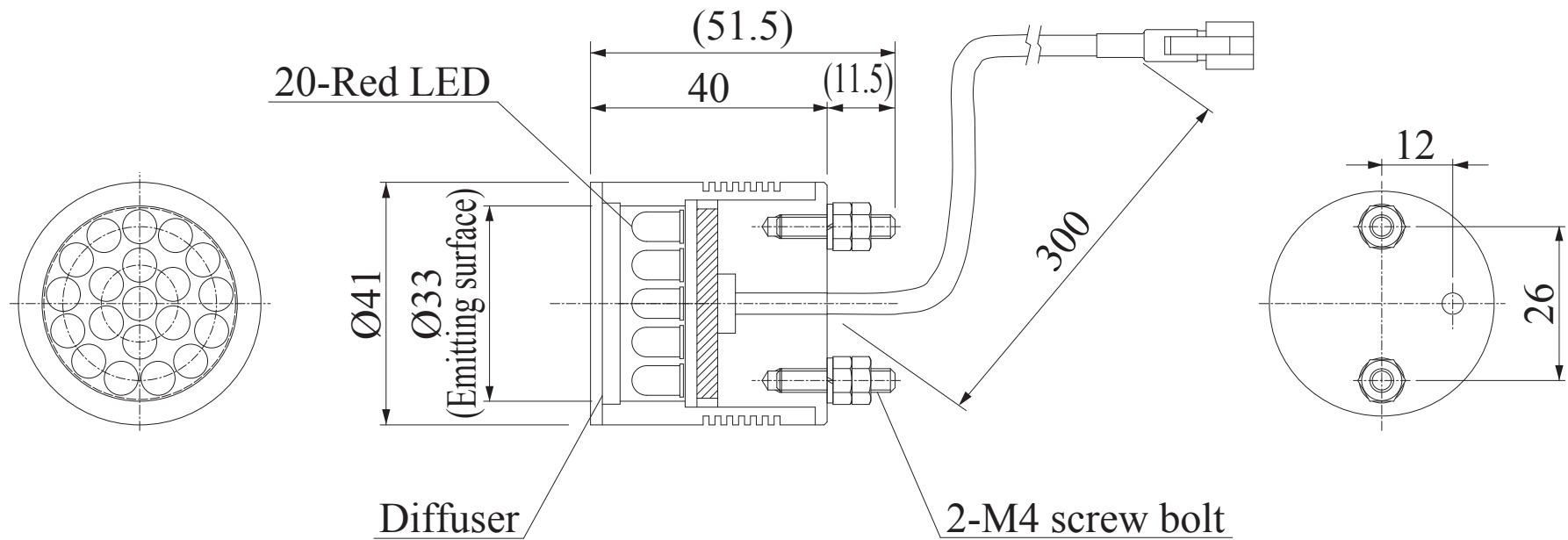


LSP-41RD

Model	LSP-41RD
Voltage	12VDC
Power consumption	2.0W
Mass	114g
Connector type	2P (1: +, 2: -)

Third Angle Projection Units: mm





Spot Lights

LSP-41 Series

Super-Uniform Spotlight for wide variety of applications.



Bright at a long working distance

High luminance spot lights "LSP-41 Series" is suited for limited and long working distance from 300mm to 500mm, with a compact design-Ø41mm diameter housing.

Applications; reading bar codes/2D codes. Inspecting die cast products such as automobile parts, wooden materials, and plastic materials.

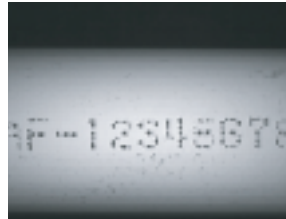
Reading bar code
Light used: LSP-41RD



Reading QR code
Light used: LSP-41RD



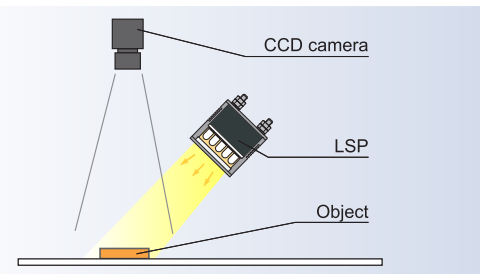
Inspecting dot-marked characters on pipe
Light used: LSP-41RD



* Optional Parts
Polarizing plate: PL-LSP-41

Illumination Structure of LSP-41RD

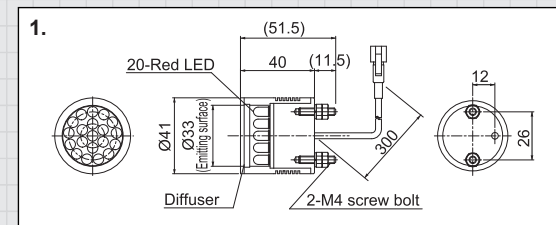
Narrow directive LEDs provide high condensing illumination. It also provides soft, even illumination through the diffusion plate.



Product Lineup Table

Series	Model Name	Color	Power Consumption	Options	Dimension
LSP-41	LSP-41RD	Red	12V/2.0W	P-L	1

Dimensions (Unit: mm)

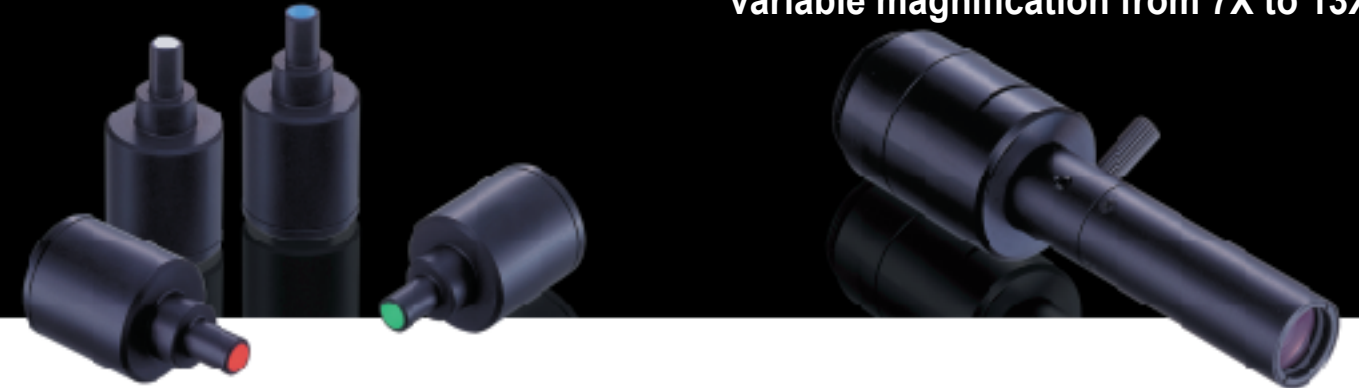


Spot Lights / Lens

LV Series / MAC-13XA

Spot illumination that illuminates evenly.

The first in the industry!
Hi-magnification macro lens with variable magnification from 7X to 13X.



Spot illumination that can be used for a wide variety of applications(LV-27)

Can be used instead of light guide of optical fiber illumination

Red, white, blue, and green are available as standard products. In addition to 8f tip diameter, 10f and 12f are available as options. Compact and light-weight design enables installation in a small area.

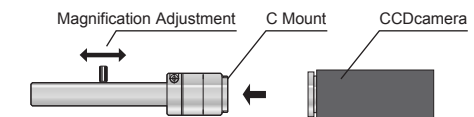
In addition to the use as a spot illumination that illuminates evenly, this product can be used instead of light guide of optical fiber illumination by installing in the light source section of macro lenses etc.



Macro Lens (MAC-13XA)

The first in the industry! Hi-magnification macro lens with variable magnification from 7X to 13X.

Can be directly installed on the C mount section of a camera. Because the outer diameter can be held firmly, this product can suppress the impact of vibrations and can be used for factory automation applications.



markings on metal scale



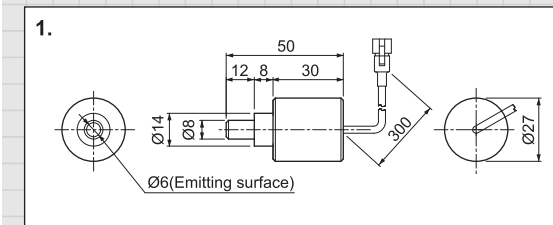
Examples of MAC-13XA Illumination Imaging

FOV : 0.3mm
LWD : 15mm
magnification : 13X

Product Lineup Table

Series	Model Name	Color	Power Consumption	Dimension
LV	LV-27-R	Red	12V/0.7W	1
	LV-27-SW	White	12V/0.7W	
	LV-27-GR	Green	12V/0.7W	
	LV-27-BL	Blue	12V/0.7W	

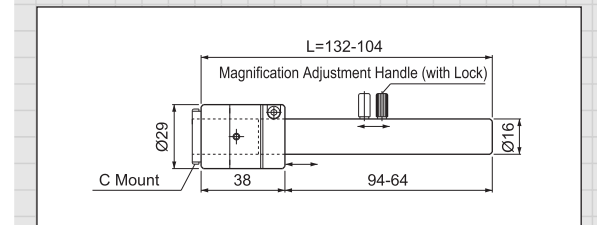
Dimensions (Unit: mm)



Magnification/Field of View

Magnification	L	WD	1/3 in.CCD	1/2 in.CCD	2/3 in.CCD
7X	104	85	Field of View: 0.5	Field of View: 0.7	Field of View: 1
13X	134	68	Field of View: 0.3	Field of View: 0.4	Field of View: 0.5

Dimensions (Unit: mm)



Brightness Change Graph & Brightness Distribution of LSP-41RD

The spotlight maintains very high and constant intensity in a certain direction even at a long working distance.

