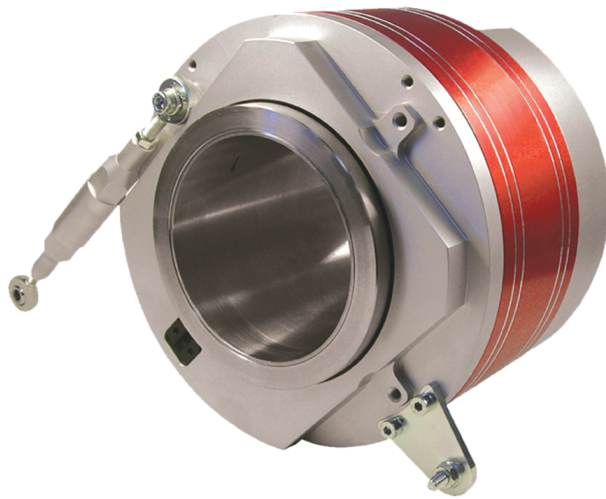


Absolute-Encoder CEH160 - ETC / SSI



Ref.: K-CEH160-ETC-1

18.11.2013

010102016002030202

Advantages

- Closed loop control signals
- Customer-specific solutions
- For variable control modes
- Motor commutation signals
- Multi-Interface-Technology

General Data

Supply	
- Supply voltage	11...27 VDC
Current consumption no load	<= 300 mA
Device design	
- Type	Single-/Multi-Turn
Total resolution	<= 27 Bit
Number of steps per revolution	<= 32768
Number of revolutions	<= 4096
EtherCAT - Interface	
- EtherCAT	IEC 61158-1-6, IEC 61784-2
- Physical Layer	Fast Ethernet, ISO/IEC 8802-3
- Device profile	CoE, CiA DS-406
SSI - Interface	
- Equipment	Standard interface
- SSI-Clock input	Optocoupler
- SSI-Data output	RS-422, 2-wire
- SSI-Clock frequency	80...1000 kHz
- SSI-Mono time, typically	20 µs
Incremental - Interface	
- Equipment	Optional interface
- Signal form	SIN/COS
- Signal form, alternative	Square wave

Subject to change.

TR-Electronic GmbH
 Eglshalde 6
 78647 Trossingen
 Tel. +49 (0) 7425 228-0
 info@tr-electronic.de
www.tr-electronic.de

Absolute-Encoder CEH160 - ETC / SSI

Ref.: K-CEH160-ETC-1

18.11.2013

010102016002030202

General Data continuation

- Incremental signals, square	K1± K2±
- Incremental signals, SIN/COS	SIN± COS±, 1 V _{ss}
- Impulses, square wave	4096 □
- Impulses, SIN/COS	4096 □
Transmission rate	
- Specific value	100 MBit/s
Parameter/Function, changeable	Resolution
	Output code
	Output format
	Limit switch
	Preset parameter
	Direction signal
	Overspeed
	Counting direction
Type of parametrization	programmable
Prgramming - Tool	TR-Soft: TRWinProg
External inputs	
- F/R	Count direction
- Preset	electronic adjustment
- Logic level	"0" < +2V, "1" = Supply
Maximum Speed, mechanically	<= 3000 1/min
Shaft load, axial/radial	Own mass
Bearing life time	>= 3.9E+10 revolutions
Bearing life time - Parameter	
- Speed	1500 1/min
- Operating temperature	60 °C

Environmental conditions

Vibration	
- Specific value	<= 100 m/s ²
- Sine	50...2000 Hz
Shock	
- Specific value	<= 1000 m/s ²
- Half sine	11 ms
Immunity to disturbance	DIN EN 61000-6-2
Transient emissions	DIN EN 61000-6-3

Subject to change.

Absolute-Encoder CEH160 - ETC / SSI

Ref.: K-CEH160-ETC-1

18.11.2013

010102016002030202

Environmental conditions continuation

Working temperature - Standard	0...+70 °C
Storage temperature, dry	-30...+80 °C
Relative humidity	98 %, non condensing
Protection class - Standard	IP65

Subject to change.

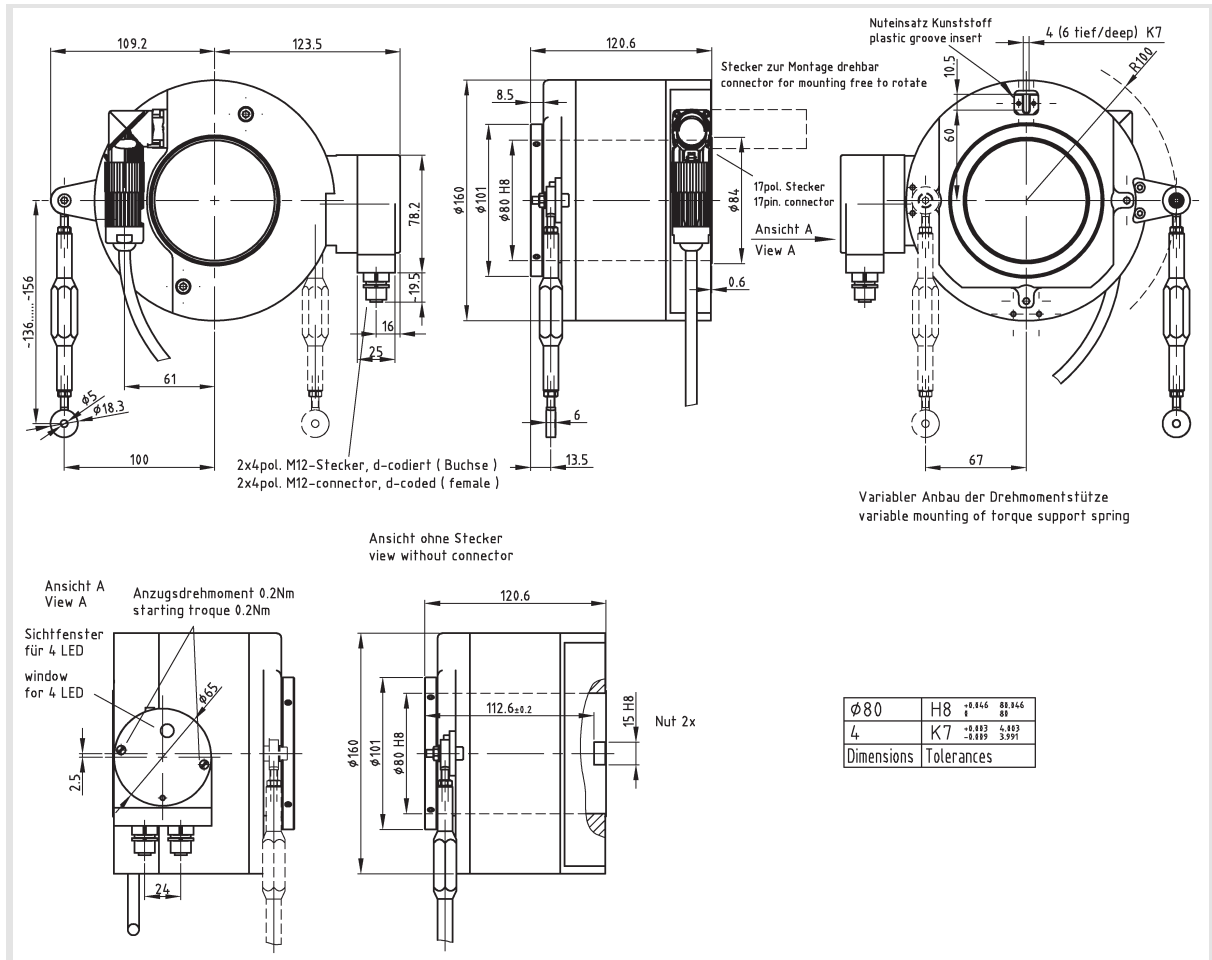
Absolute-Encoder CEH160 - ETC / SSI

Ref.: K-CEH160-ETC-1

18.11.2013

010102016002030202

Dimensional drawing



Subject to change.

TR-Electronic GmbH
 Eglishalde 6
 78647 Trossingen
 Tel. +49 (0) 7425 228-0
 info@tr-electronic.de
www.tr-electronic.de