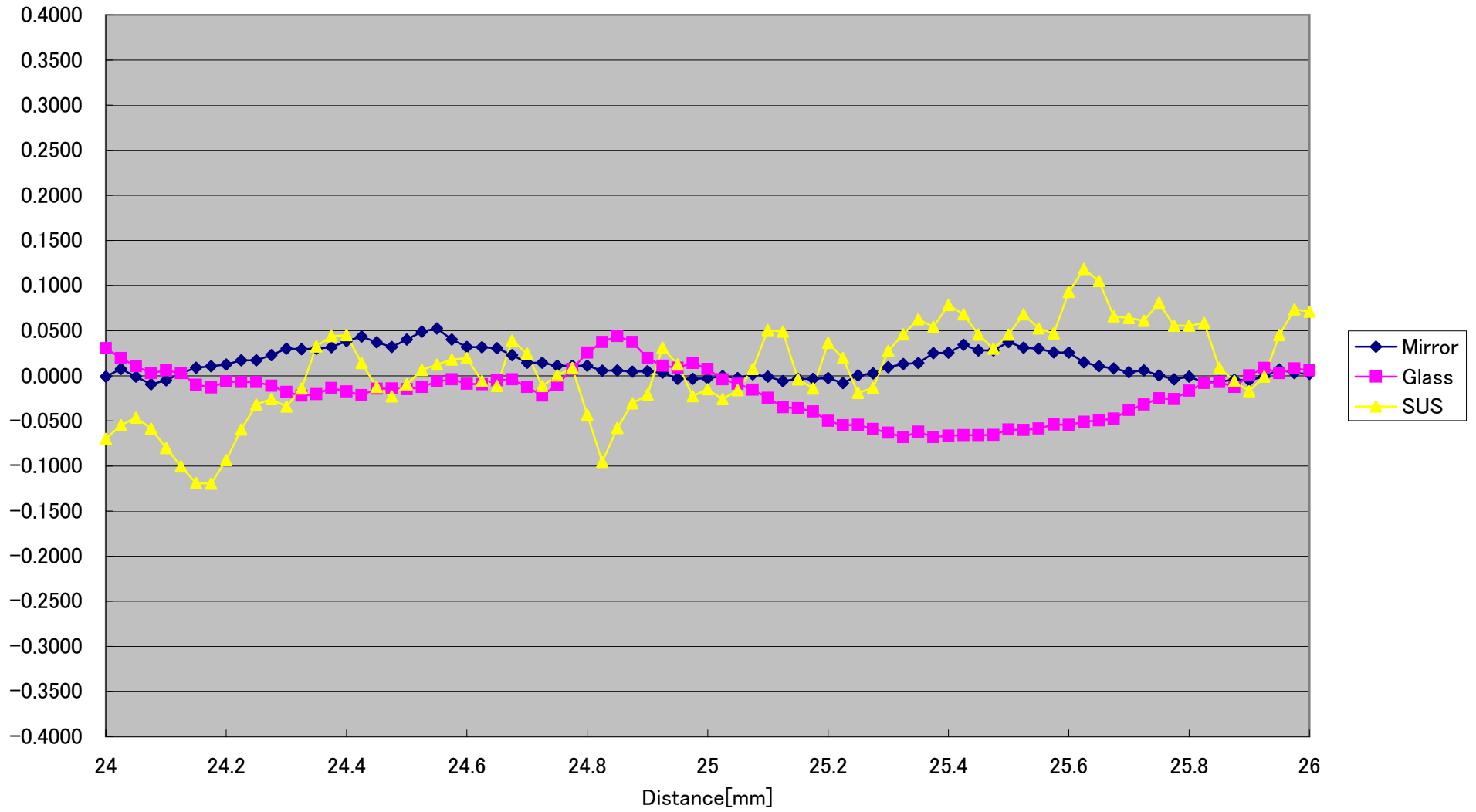
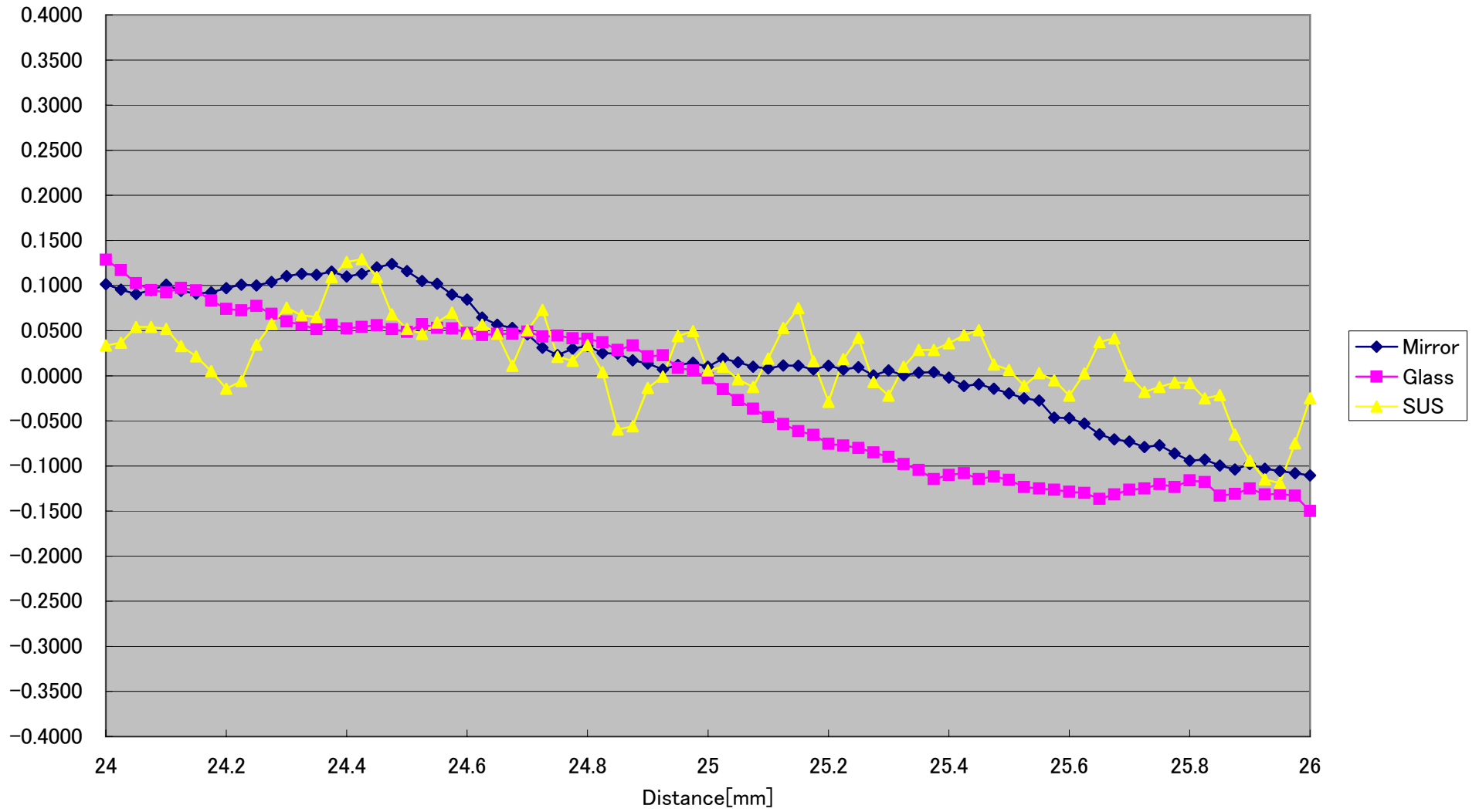


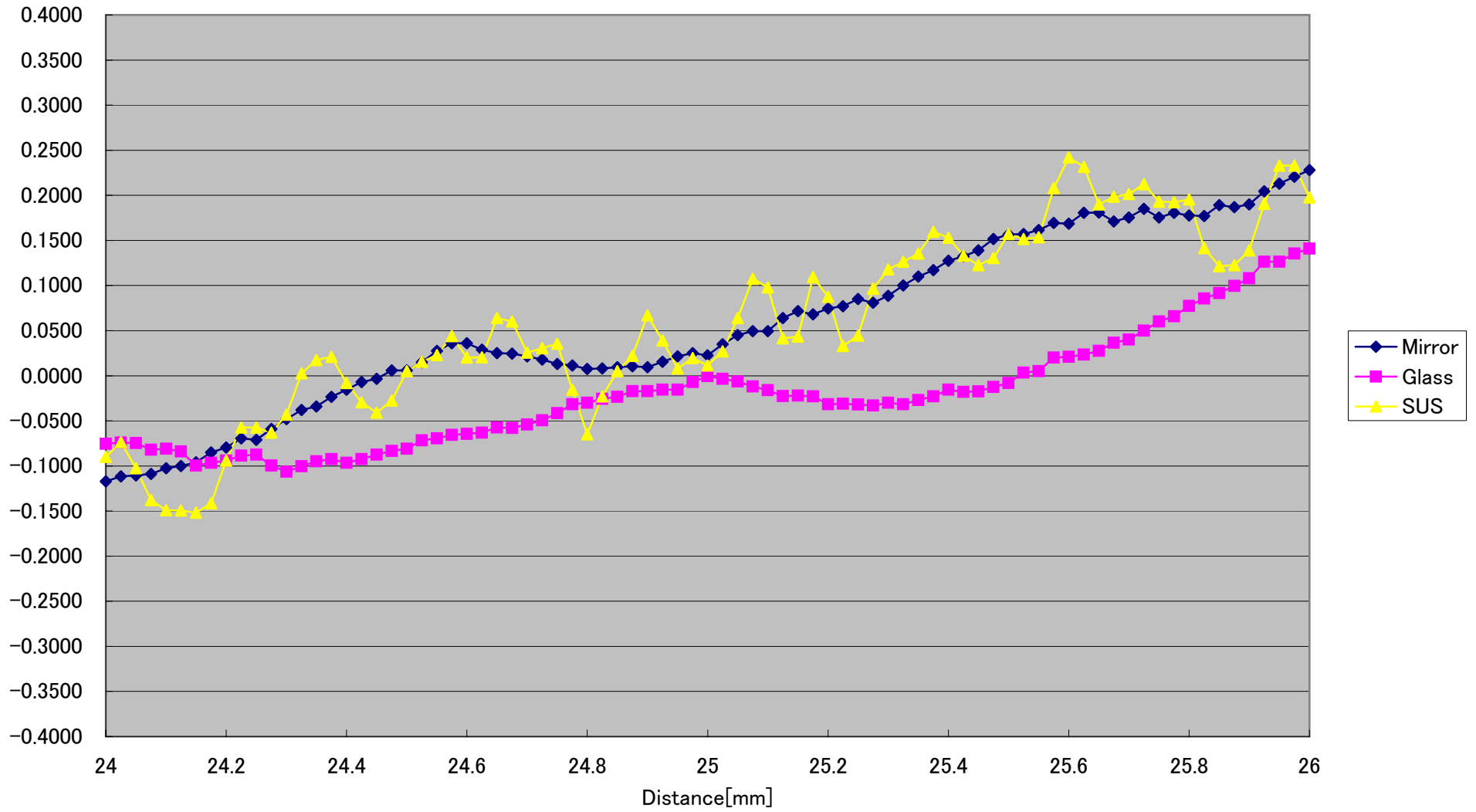
CD5-25-WIDE Linearity( $\pm 0^\circ$ ) [%FS] (Typical)



CD5-25-WIDE Linearity(Vertical  $-0.2^\circ$  )[%FS] (Typical)



CD5-25-WIDE Linearity(Vertical +0.2° )[%FS] (Typical)



CD5-25-WIDE Linearity(Horizontal 0.2° )[%FS] (Typical)

