

To use the touch screen feature on the Mitsubishi GT15 and GT16 with the WVGA system, use the CCB-WVGA-GOT cable (or make your own cable using the below information) and a straight through serial cable to the GT15 or GT16 panel.

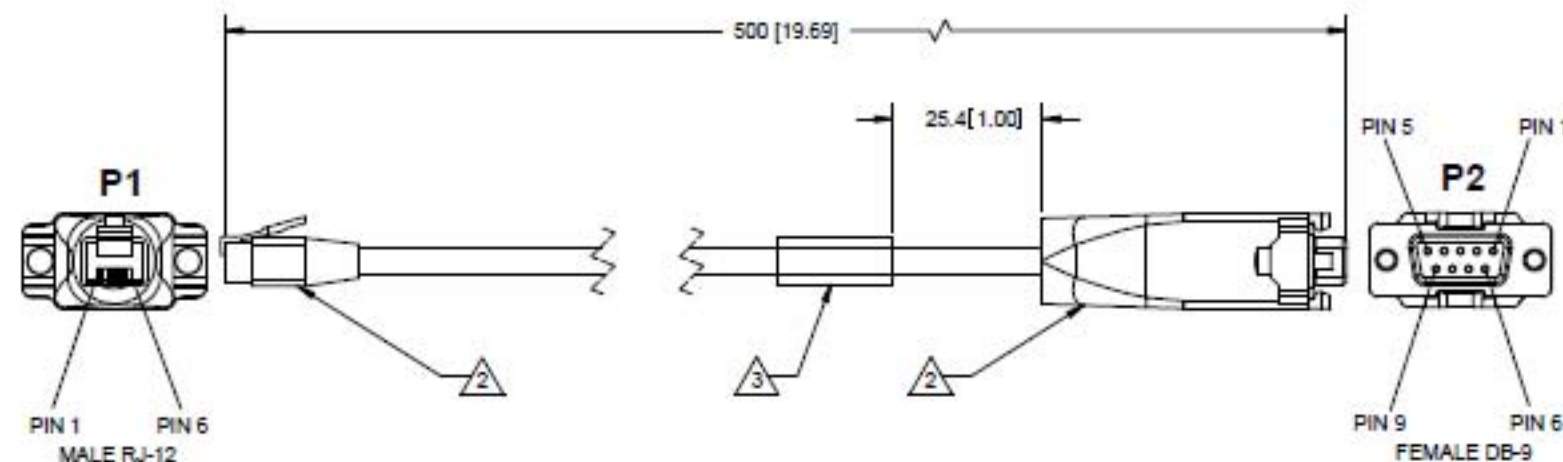
NOTES, UNLESS OTHERWISE SPECIFIED:

- ① SHORT PIN 8 AND 6 INSIDE THE DB-9 HOUSING
- ② BOTH CONNECTORS TO HAVE STRAIN RELIEF USING APPROPRIATE OVERMOLD.
- ③ PRINT CABLE ASSEMBLY LABEL PER COGNEX SPEC 3709 AND WRAP AROUND CABLE AS SHOWN.

- 4. THIS CABLE MUST BE MADE FROM UL RECOGNIZED OR LISTED PARTS AND BE COMPLIANT TO UL-2464.
- 5. CABLE COLOR TO BE MATTE BLACK.
- 6. INDIVIDUAL WIRES TO BE 26 AWG.
- 7. UL MARKING SHOULD BE VISIBLE ON THE OUTER JACKET OF THE CABLE ASSEMBLY.
- 8. WIRES AND CONNECTORS ARE NON-SHIELDED.
- 9. PIN TO PIN CONTINUITY TO BE CHECKED ON ALL CABLES.
- 10. ALL MATERIALS, PROCESSES AND FINISHES OF FINAL PRODUCT TO COMPLY WITH EU RoHS DIRECTIVE. EACH HOMOGENOUS MATERIAL NOT TO EXCEED THE MAXIMUM CONCENTRATION VALUE (MCV) FOR RoHS RESTRICTED MATERIALS:

SUBSTANCE	RoHS LIMIT: MCV
A. LEAD (Pb)	<0.10% =< 1,000PPM
B. MERCURY (Hg)	<0.10% =< 1,000PPM
C. HEXAVALENT CHROMIUM (Cr VI)	<0.10% =< 1,000PPM
D. CADMIUM (Cd)	<0.01% =< 100PPM
E. POLYBROMINATED BIPHENYL (PBB)	<0.10% =< 1,000PPM
F. POLYBROMATED DIPHENYL ETHER (PBDE)	<0.10% =< 1,000PPM

VENDOR TO PROVIDE CERTIFICATE OF COMPLIANCE FOR ALL MATERIALS, PROCESSES AND FINISHES OF FINAL PRODUCT.



WIRING DIAGRAM

P1	P2
PIN 1 BLACK	PIN 7
PIN 3 BROWN	PIN 2
PIN 4 RED	PIN 5
PIN 5 ORANGE	PIN 3
PIN 6 YELLOW	PIN 8
	PIN 8

SHORT TOGETHER ON DB-9 ①