



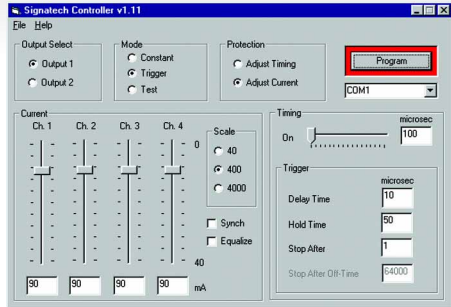
- Features Ai's proprietary Signatech system; light head "signatures" are sensed by the microprocessor based controller to allow maximum performance without compromising LED life
- Controller provides fast rise time and high current pulses
- Two independently controlled light head outputs are provided, allowing two cameras to be used in a dual inspection configuration. The S6000-AS features asynchronous triggering
- Provides Ai's "All color" RGB light heads with independent power level controls for up to four channels within each lighthouse



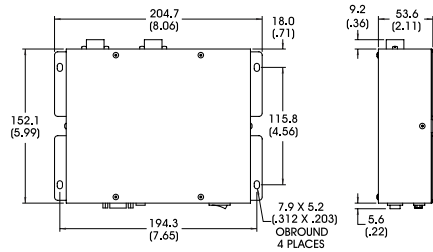
**S6000**

**SignaTech Controller Software**

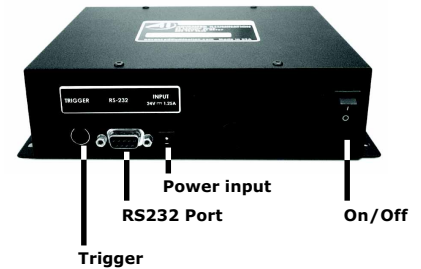
SignaTech software enables the user to program all strobe controller current and timing parameters. Currents are programmable for each of four channels per output, and expressed in milliamps from 0-4000. Timing parameters include pulse width, pre and post event delay time, trigger repeat setting, and a programmable off time between repetitions. All timing parameters are programmed in steps of 1 microsecond, up to a maximum of 64000.



Detecting unsafe parameters for a light, SignaTech will retard either current or timing (selectable) ensuring continuous reliable operation. The software allows three modes of operation: continuous (DC), Trigger (Strobe), and Test. All output settings can be saved and recalled later. Settings already programmed into a Signatech strobe controller can be queried from the controller and saved to a file. The last used settings are recalled automatically at startup.



DIMENSIONS ARE IN MILLIMETERS (INCHES)



Pulse	Parameter	Range	Computer	Increment
	On Time	0 or 1 to 64000	1	1 microsec
	Delay Time	0 or 1 to 64000	1	1 microsec
	Stop Time	0 or 1 to 64000	1	1 microsec
	Off Time	0 or 1 to 64000	1	1 microsec
	Hold Time	0 or 1 to 64000	1	1 microsec

**Part Number Designation**

Standard Product **SHIPPED NEXT DAY**

Part Number: **S6000**

Standard Product Variation **SHIPPED WITHIN TWO WEEKS**

Optional Asynchronous Control  
**S6000 - XX AS**

Visit us on-line!

[www.advancedillumination.com](http://www.advancedillumination.com)