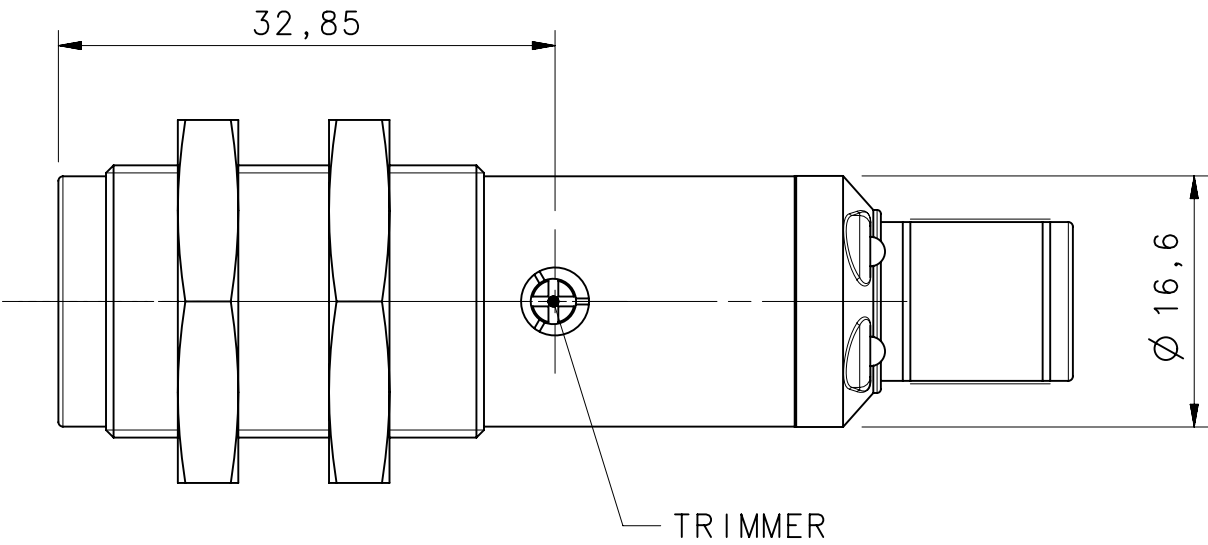
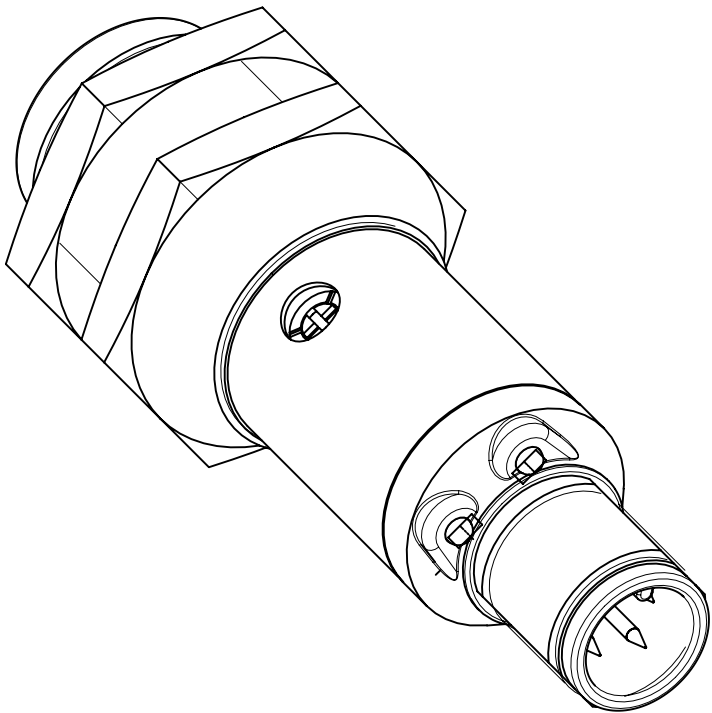
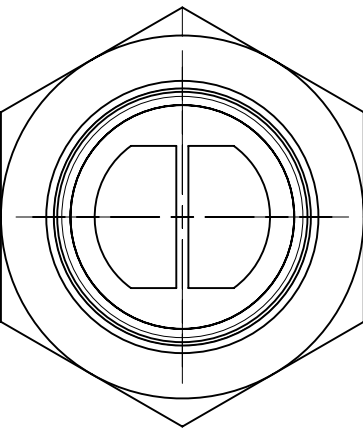
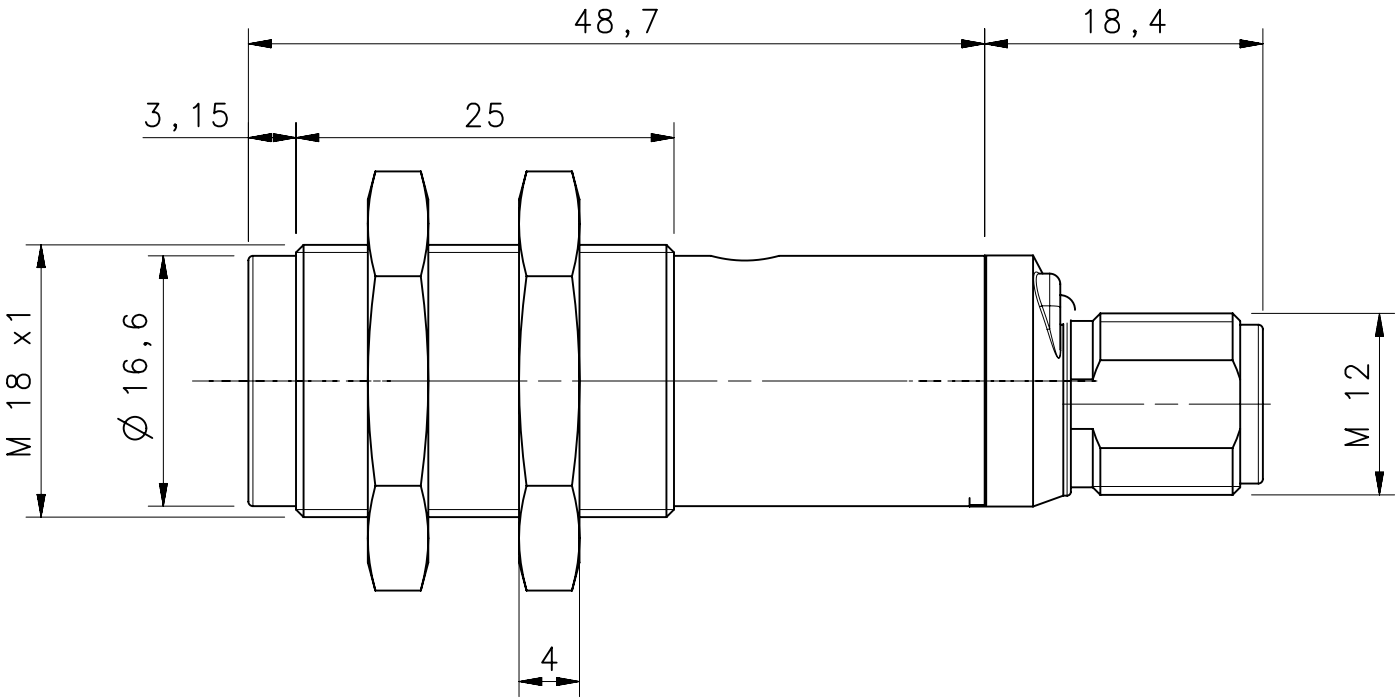
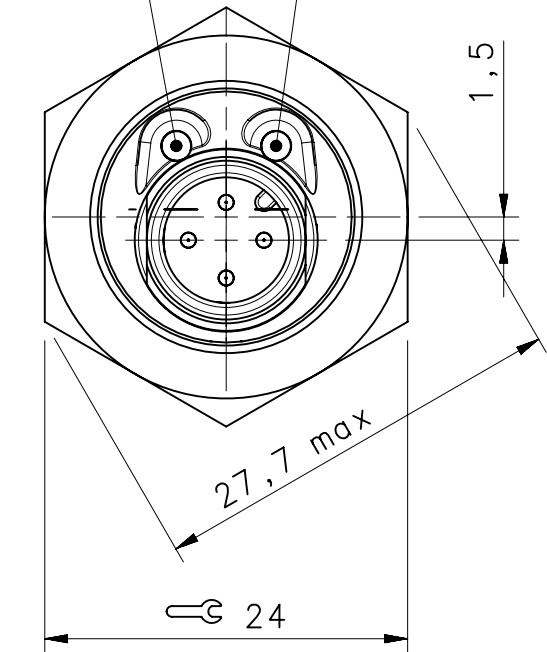
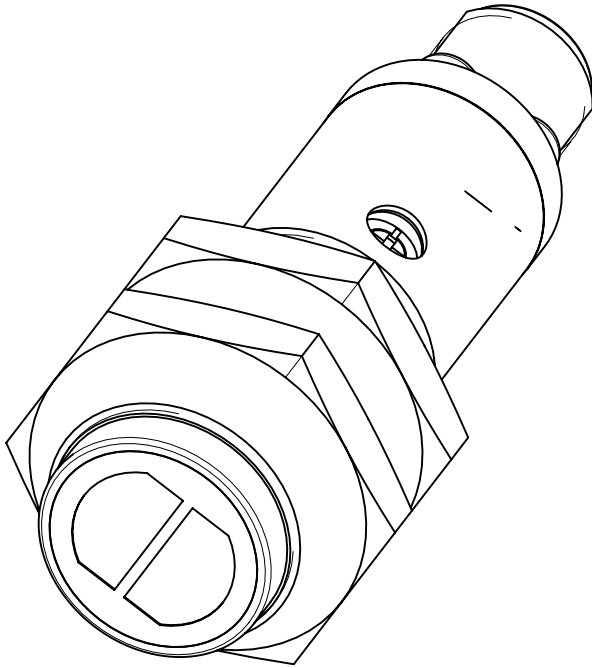


STABILITY LED

OUTPUT LED



TRIMMER



MOD.	REV.	PROPOSAL	DESCRIPTION.					DATE	SIGN
All materials employed have to be selected among RoHS compliant materials: the EC directives to be referred to are 2002/95/EC and correlated subsequent ones.									
DIMENSIONS WITHOUT TOLERANCE DEGREE:  -			NOTE Version A,B,C,T,F Stainless steel, long, M12, trimmer.						
PRECISION DEGREE	DIMENSIONAL GROUPS					TREAT.		SCALE  2 : 1	
	> 0 A 6	> 6 A 30	> 30 A 120	> 120 A 315	> 315 A 999	MATER.			
MEDIUM (m)	± 0,1	± 0,2	± 0,3	± 0,5	± 0,8	DES. BY Aprile		DATE 05/06/12	
PRECISE (P)	± 0,05	± 0,1	± 0,15	± 0,2	± 0,3				
			NAME  S15				MOLD N° .		
							CODE		REV.
							PART N° DIM-0738		