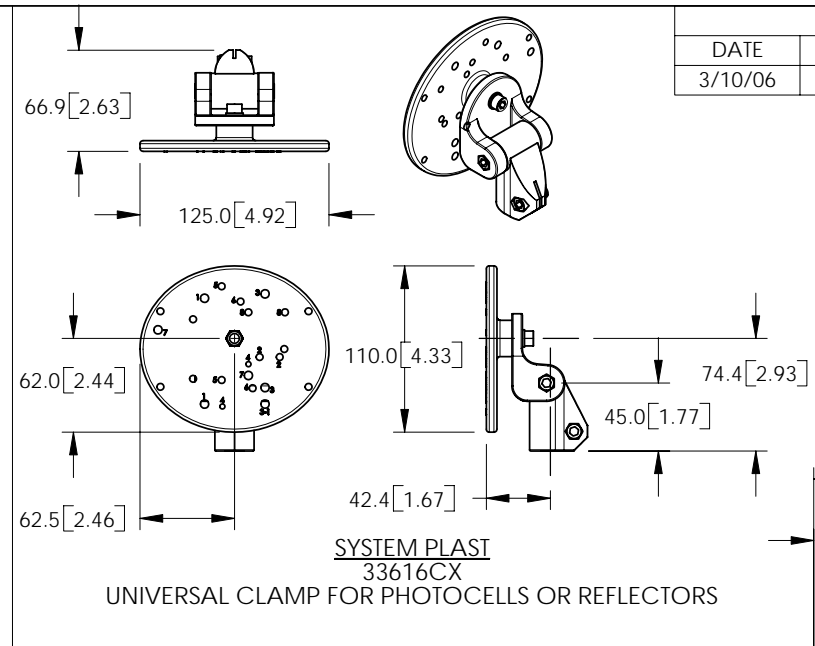
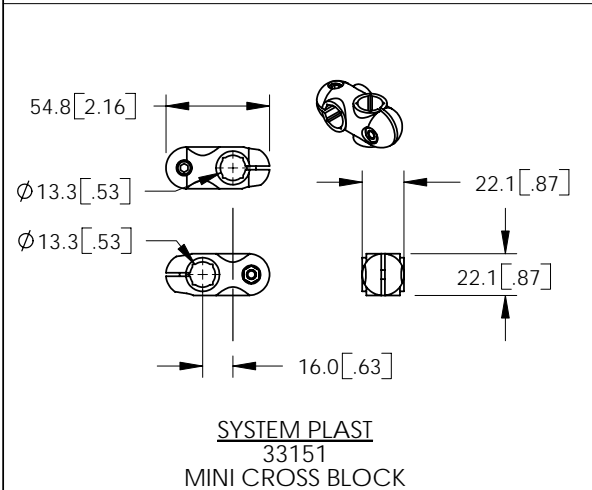


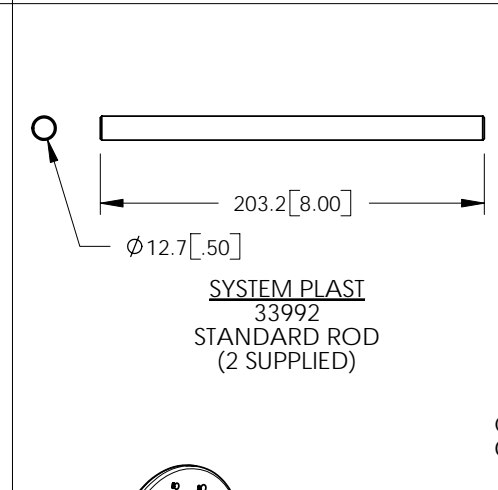
**SYSTEM PLAST**  
33231  
BRACKET WITH HAND KNOB



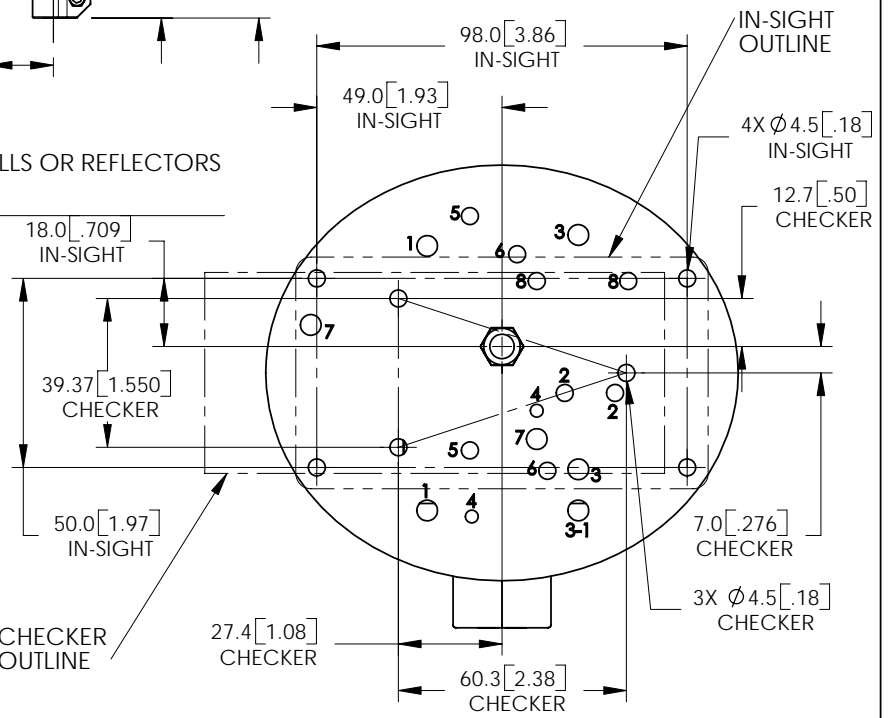
**SYSTEM PLAST**  
33616CX  
UNIVERSAL CLAMP FOR PHOTOCELLS OR REFLECTORS



**SYSTEM PLAST**  
33151  
MINI CROSS BLOCK

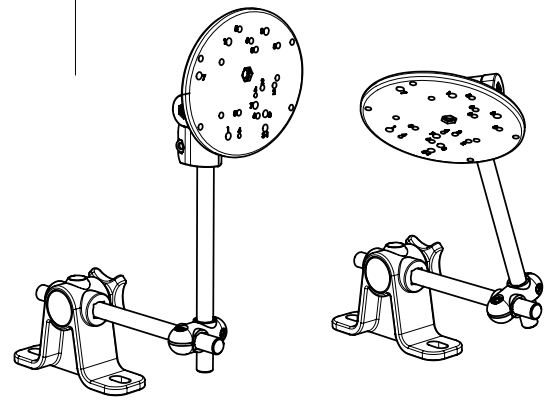


**SYSTEM PLAST**  
33992  
STANDARD ROD  
(2 SUPPLIED)



- NOTES:
1. ALL DIMENSIONS FOR REFERENCE PURPOSES ONLY.
  2. ALL SPECIFICATIONS MAY CHANGE WITHOUT NOTICE.

**SYSTEM PLAST 90601**  
PHOTO CELL MOUNT KIT



REVISIONS	
DATE	DESCRIPTION
3/10/06	INITIAL RELEASE

<b>DIMENSIONS:</b> UNLESS OTHERWISE SPECIFIED, DIMENSIONS ARE DISPLAYED IN MILLIMETERS [INCHES]  <b>TOLERANCES:</b> X.X[X.XX]: ± 0.25[0.010] X.XX[X.XXX]: ± 0.13[0.005] ANGULAR: ± .5° GEOMETRIC TOLERANCES PER ASME Y14.5M-1994	<b>COGNEX</b>		NATICK, MA 01760 <a href="http://www.cognex.com/support/In-Sight.asp">www.cognex.com/support/In-Sight.asp</a>
	<b>MATERIAL:</b> REINFORCED POLYAMIDE ACETAL RESIN STAINLESS STEEL RODS AND FASTENERS	<b>APPLIES TO:</b> <b>IN-SIGHT 5XXX</b> <b>CHECKER</b>	
SCALE: NTS	DOC NO: IS005-01	REL DATE: 3/10/06	