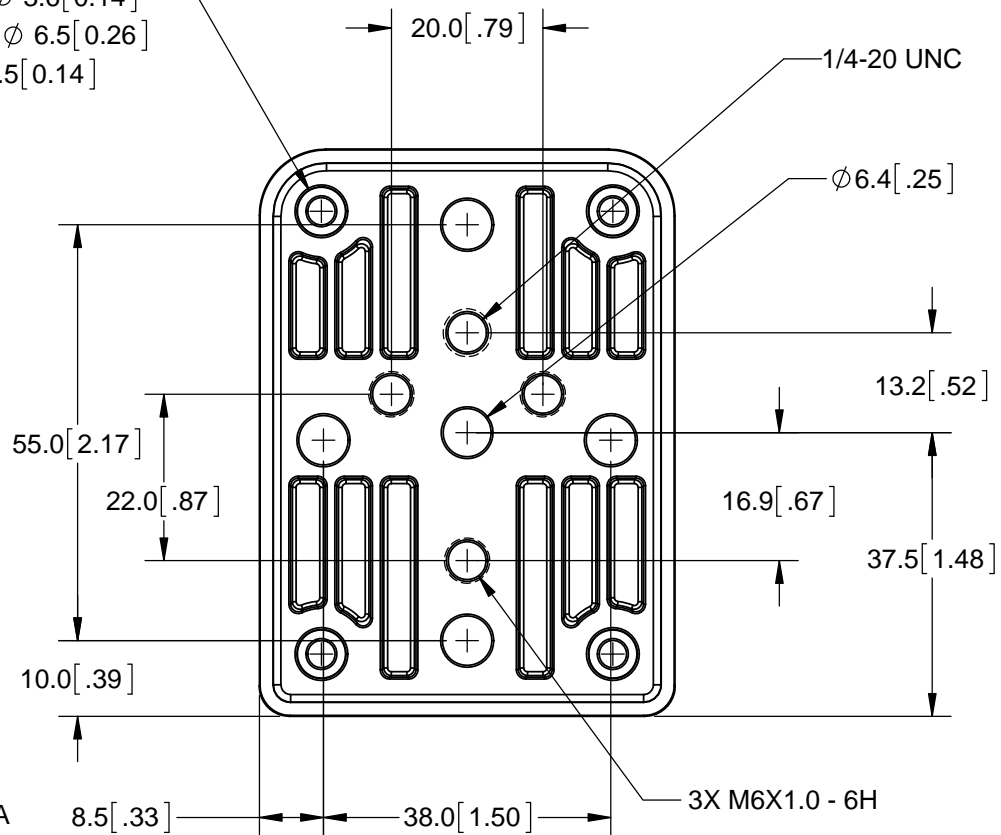
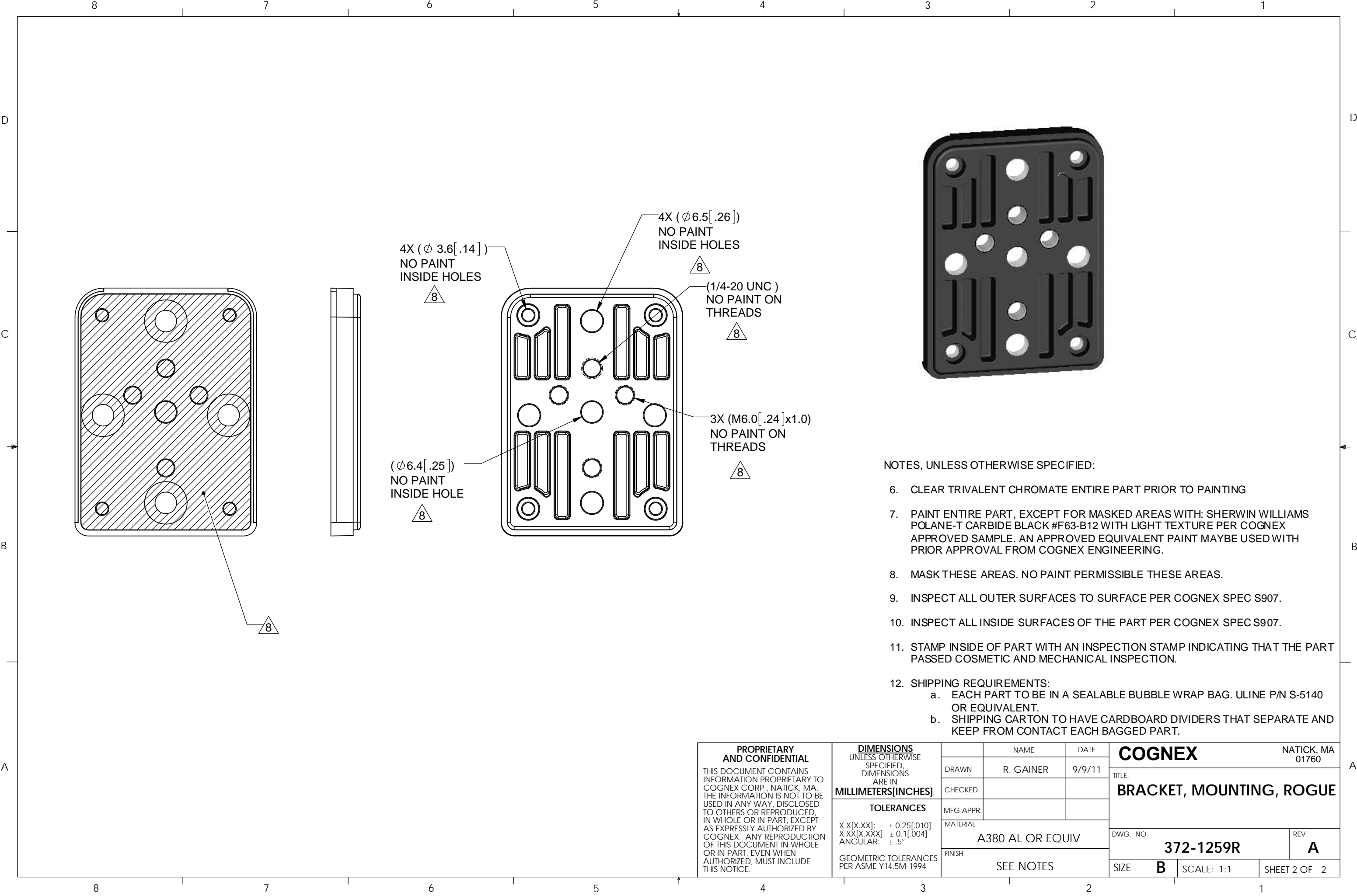


4X  $\phi$  3.6[0.14]  
 $\sqsubset$   $\phi$  6.5[0.26]  
 $\nabla$  3.5[0.14]





- NOTES, UNLESS OTHERWISE SPECIFIED:
- 6. CLEAR TRIVALENT CHROMATE ENTIRE PART PRIOR TO PAINTING
  - 7. PAINT ENTIRE PART, EXCEPT FOR MASKED AREAS WITH: SHERWIN WILLIAMS POLANE-T CARBIDE BLACK #F63-B12 WITH LIGHT TEXTURE PER COGNEX APPROVED SAMPLE. AN APPROVED EQUIVALENT PAINT MAYBE USED WITH PRIOR APPROVAL FROM COGNEX ENGINEERING.
  - 8. MASK THESE AREAS. NO PAINT PERMISSIBLE THESE AREAS.
  - 9. INSPECT ALL OUTER SURFACES TO SURFACE PER COGNEX SPEC S907.
  - 10. INSPECT ALL INSIDE SURFACES OF THE PART PER COGNEX SPEC S907.
  - 11. STAMP INSIDE OF PART WITH AN INSPECTION STAMP INDICATING THAT THE PART PASSED COSMETIC AND MECHANICAL INSPECTION.
  - 12. SHIPPING REQUIREMENTS:
    - a. EACH PART TO BE IN A SEALABLE BUBBLE WRAP BAG. ULINE P/N S-5140 OR EQUIVALENT.
    - b. SHIPPING CARTON TO HAVE CARDBOARD DIVIDERS THAT SEPARATE AND KEEP FROM CONTACT EACH BAGGED PART.

<b>PROPRIETARY AND CONFIDENTIAL</b> THIS DOCUMENT CONTAINS INFORMATION PROPRIETARY TO COGNEX CORP., NATICK, MA. THE INFORMATION IS NOT TO BE USED IN ANY WAY, DISCLOSED TO OTHERS OR REPRODUCED, IN WHOLE OR IN PART, EXCEPT AS EXPRESSLY AUTHORIZED BY COGNEX. ANY REPRODUCTION OF THIS DOCUMENT IN WHOLE OR IN PART, EVEN WHEN AUTHORIZED, MUST INCLUDE THIS NOTICE.	<b>DIMENSIONS</b> UNLESS OTHERWISE SPECIFIED, DIMENSIONS ARE IN <b>MILLIMETERS[INCHES]</b> .  <b>TOLERANCES</b> X.X[X.XX]: ± 0.25[.010] X.XX[X.XXX]: ± 0.1[.004] ANGULAR: ± .5°  GEOMETRIC TOLERANCES PER ASME Y14.5M-1994		NAME	DATE	<b>COGNEX</b> NATICK, MA 01760	
		DRAWN	R. GAINER	9/9/11	TITLE: <b>BRACKET, MOUNTING, ROGUE</b>	
		CHECKED			DWG. NO. <b>372-1259R</b>	
		MFG APPR.			REV <b>A</b>	
		MATERIAL	A380 AL OR EQUIV		SIZE <b>B</b>	SCALE: 1:1
		FINISH	SEE NOTES		SHEET 2 OF 2	