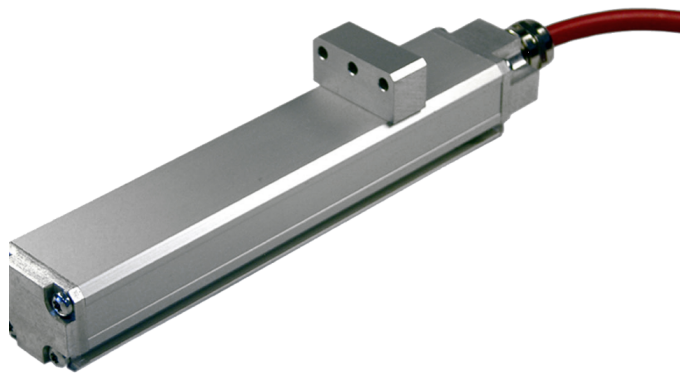


Linear-Transducer LMP30 - SSI



Ref.: K-LMP30-SSI-1

14.11.2013

0102010110

Advantages

- _ Customer-specific solutions
- _ Factory parametrization
- _ Further interfaces available
- _ Measures linear movements
- _ Profile housing
- _ Simple integration
- _ Wear-free detection

General Data

Supply	
- Supply voltage	24 VDC, -20...+10 %
Current consumption no load	<= 250 mA
Measuring principle	magnetostrictive
Measuring length, standard	50...4000 mm, in steps
Resolution	0.05 mm
Linearity deviation	± 0.15 mm <= 1500 mm ± 0.20 mm > 1500 mm
Reproducibility	0.05 mm
Hysteresis	0.1 mm
Temperature coefficient	< 8 µm/°C <= 500 mm < 15 ppm/°C > 500 mm
Straight line velocity	no restrictions
Mounting position	no restrictions
Material - Measuring body	Aluminium extruded profile
Magnet	T1-S3818 other on request
SSI - Interface	
- SSI-Clock input	Optocoupler
- SSI-Data output	RS-422, 2-wire
- SSI-Clock frequency	95...1000 kHz

Subject to change.

TR-Electronic GmbH
Eglshalde 6
78647 Trossingen
Tel. +49 (0) 7425 228-0
info@tr-electronic.de
www.tr-electronic.de

Linear-Transducer LMP30 - SSI

Ref.: K-LMP30-SSI-1

14.11.2013

0102010110

General Data continuation

- SSI-Mono time, typically	20 μ s
Parameter/Function, changeable	Output code
Type of parametrization	Factory setting
Cycle time internal, \leq 1.00 m	1.00 ms
Cycle time internal, \leq 2.00 m	1.50 ms
Cycle time internal, \leq 3.00 m	2.00 ms
Cycle time internal, $>$ 3.00 m	2.50 ms

Environmental conditions

Vibration	
- Specific value	\leq 100 m/s ²
- Sine	50...2000 Hz
Shock	
- Specific value	\leq 1000 m/s ²
- Half sine	11 ms
Immunity to disturbance	DIN EN 61000-6-2
Transient emissions	DIN EN 61000-6-3
Working temperature	
- Standard	0...+70 °C
- Optional	-20...+70 °C;
Storage temperature, dry	-30...+85 °C
Relative humidity	98 %, non condensing
Protection class	
- Standard	IP65
Stray magnetic field	$<$ 3 mT
Measuring reference	Measuring plane

Subject to change.

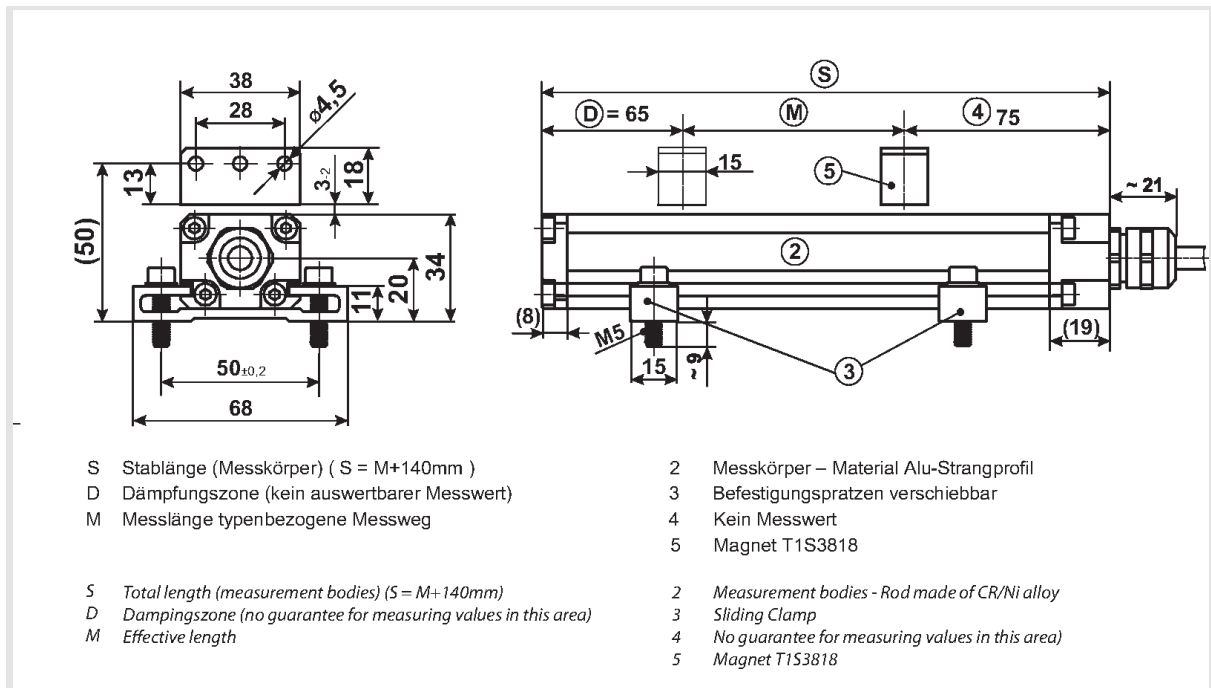
Linear-Transducer LMP30 - SSI

Ref.: K-LMP30-SSI-1

14.11.2013

0102010110

Dimensional drawing



Suggested products

LMP_30*150 SSI R 0,05mm 0,5 m Ltg. 12polM23	322-00112
LMP_30*1000 SSI R 0,01mm 0,5 m Ltg. 12polM23	322-00148
LMP_30*300 SSI R 0,01mm 0,5 m Ltg. 12polM23	322-00166
LMP_30*500 SSI R 0,01mm 0,5 m Ltg. 12polM23	322-00250

Subject to change.