

Absolute-Encoder CES65 - PB / SSI

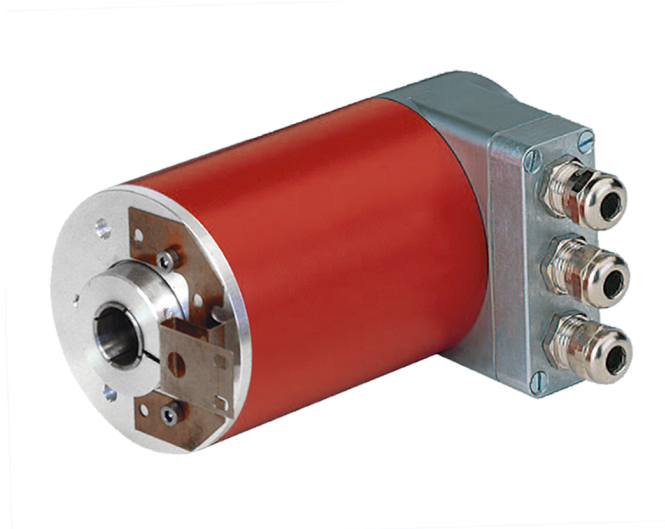
Ref.: K-CES65-PB-1

18.11.2013

010102006502020203

Advantages

- _ Customer-specific solutions
- _ Flexible programming
- _ Further interfaces available
- _ Modular mechanical design
- _ Modular product line



General Data

Supply	
- Supply voltage	11...27 VDC
Current consumption no load	<= 350 mA
Device design	
- Type	Single-/Multi-Turn
Total resolution	<= 31 Bit
Number of steps per revolution	<= 8192
Number of revolutions	<= 256000
Output capacity	<= 25 Bit
SSI - Interface	
- Equipment	Optional interface
- SSI-Clock input	Optocoupler
- SSI-Data output	RS-422, 2-wire
- SSI-Clock frequency	80... 1000 kHz
- SSI-Mono time, typically	18 μ s
Incremental - Interface	
- Equipment	Optional interface
- Incremental signals, square	K1 \pm K2 \pm
- Impulses, square wave	1024 or 2048
- Output driver, TTL	RS-422, 5 VDC
Transmission rate	
- Specific value	9.6... 12000 kbit/s

Subject to change.

TR-Electronic GmbH
 Eglshalde 6
 78647 Trossingen
 Tel. +49 (0) 7425 228-0
 info@tr-electronic.de
www.tr-electronic.de

Absolute-Encoder CES65 - PB / SSI

Ref.: K-CES65-PB-1
18.11.2013
010102006502020203

General Data continuation

Cycle time	250 μ s
Parameter/Function, changeable	Resolution
	Output code
	Limit switch
	External Preset inputs
	Adjustment - Parameter
	SSI-Parameter
	Counting direction
	Gear function
	Velocity parameter
Type of parametrization	programmable
Programming - Tool	Fieldbus-Device
External inputs - Preset	electronic adjustment
Maximum Speed, mechanically	\leq 6000 1/min
Shaft load, axial/radial	Own mass
Bearing life time	\geq 3.9E+10 revolutions
Bearing life time - Parameter - Speed	3000 1/min
- Operating temperature	60 $^{\circ}$ C
Angular acceleration	\leq 10E+4 rad/s ²
Moment of inertia, typically	2.5E-6 kg m ²
Start-up torque, 20 $^{\circ}$ C	2 Ncm
Mass, typically	0.7 kg

Environmental conditions

Vibration - Specific value	\leq 100 m/s ²
- Sine	50...2000 Hz
Shock - Specific value	\leq 1000 m/s ²
- Half sine	11 ms
Immunity to disturbance	DIN EN 61000-6-2
Transient emissions	DIN EN 61000-6-3
Working temperature - Standard	0...+60 $^{\circ}$ C

Subject to change.

Absolute-Encoder CES65 - PB / SSI

Ref.: K-CES65-PB-1

18.11.2013

010102006502020203

Environmental conditions continuation

- Optional	-20...+70 °C;
Storage temperature, dry	-30...+80 °C
Relative humidity	98 %, non condensing
Protection class	
- Standard	IP65

Subject to change.

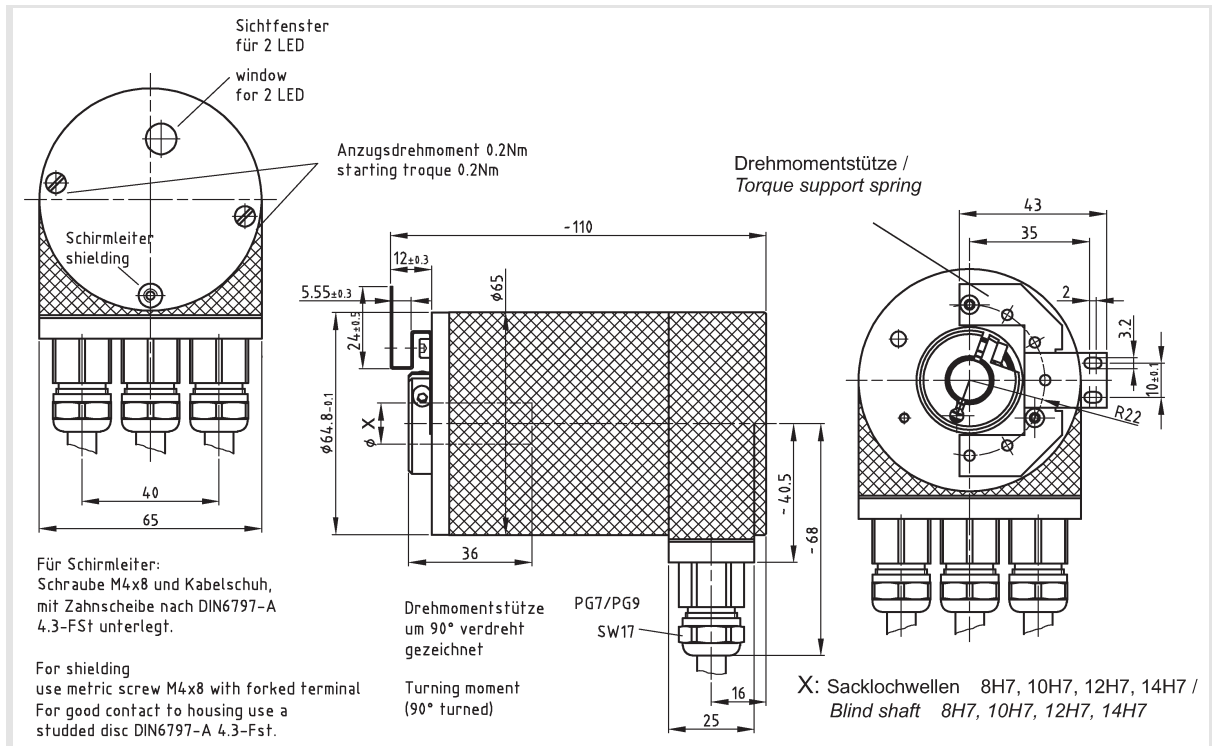
Absolute-Encoder CES65 - PB / SSI

Ref.: K-CES65-PB-1

18.11.2013

010102006502020203

Dimensional drawing



Subject to change.