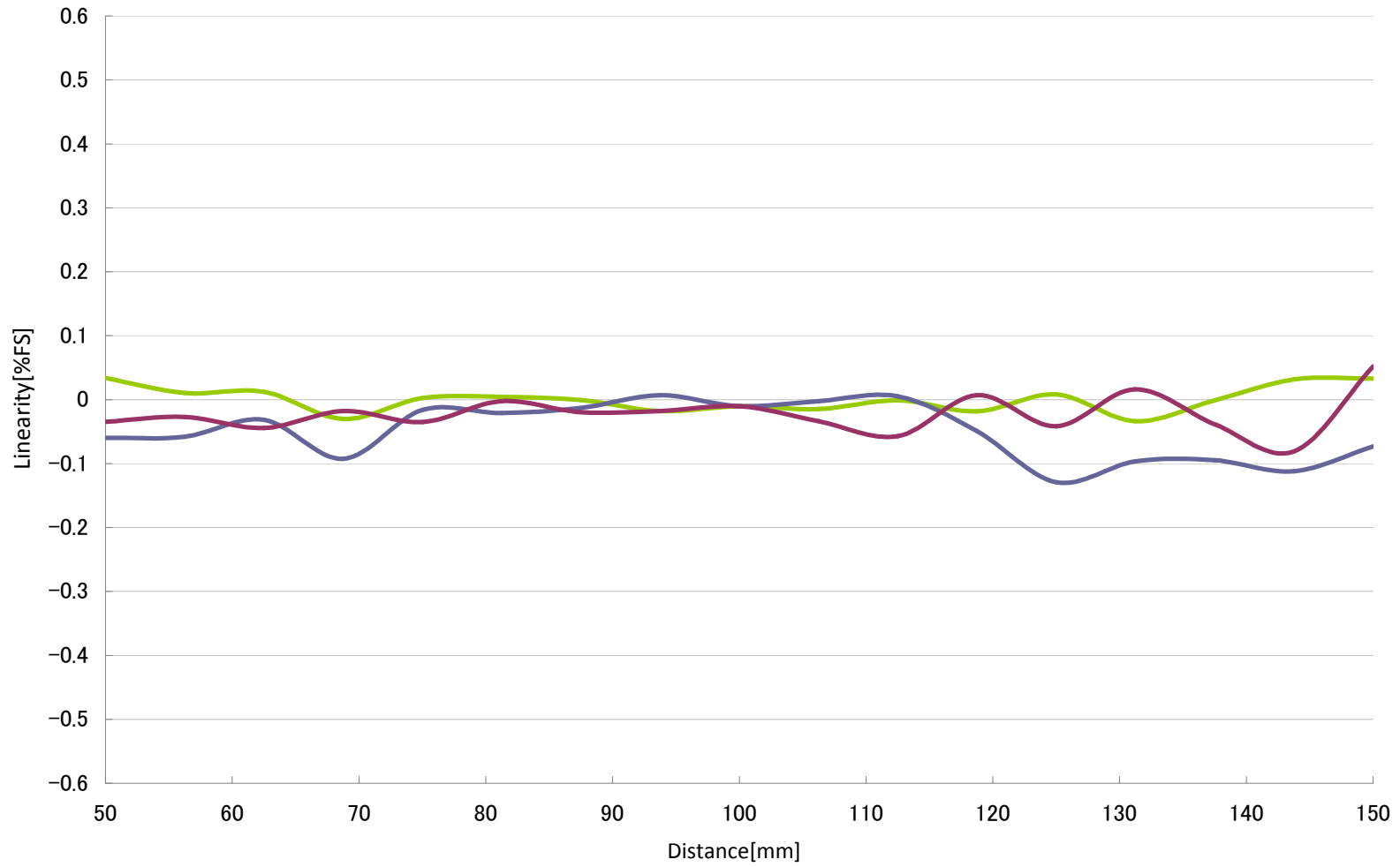


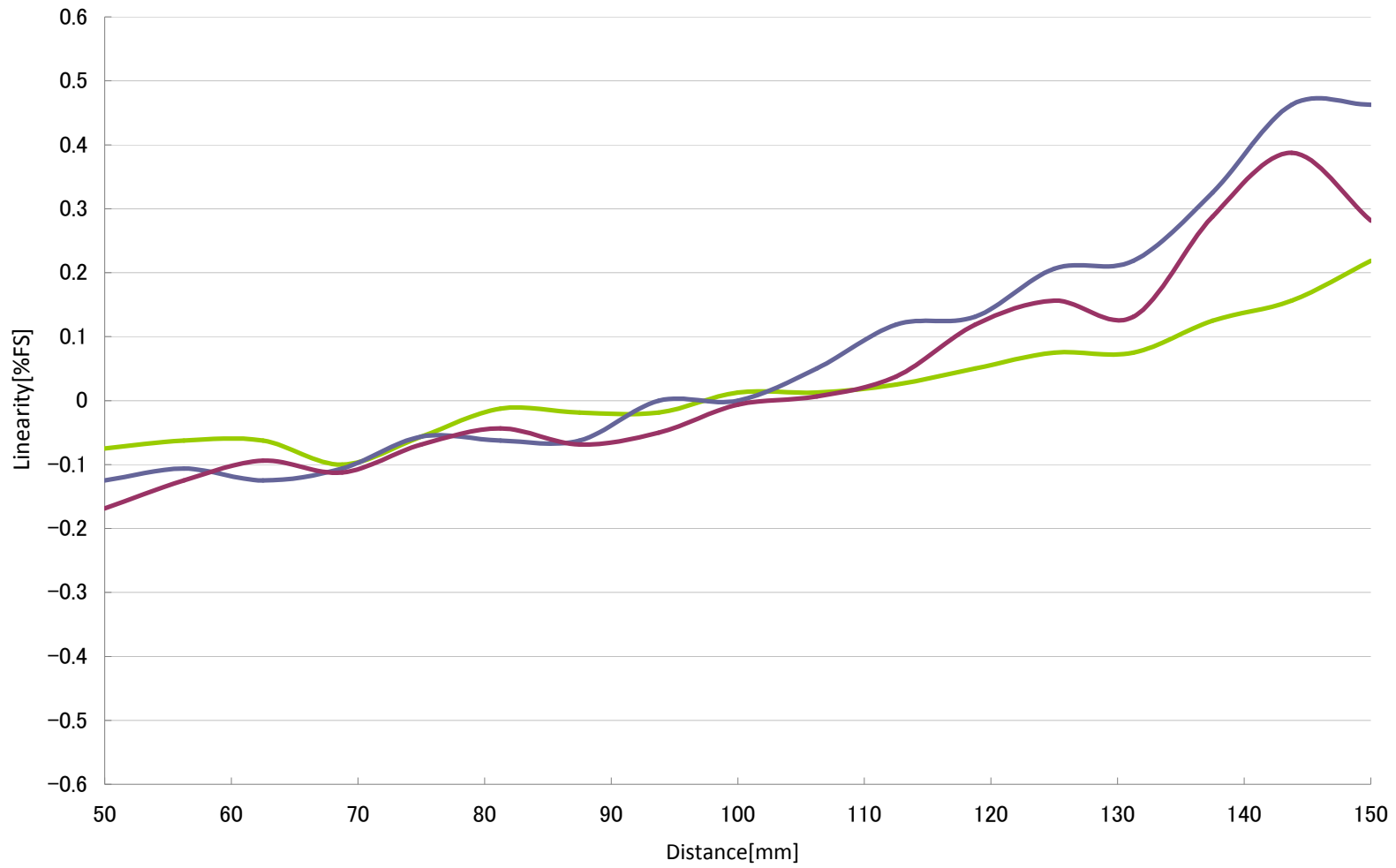
CD22 100mm type Linearity Current Output

- White ceramic
- Stainless steel
- Black rubber



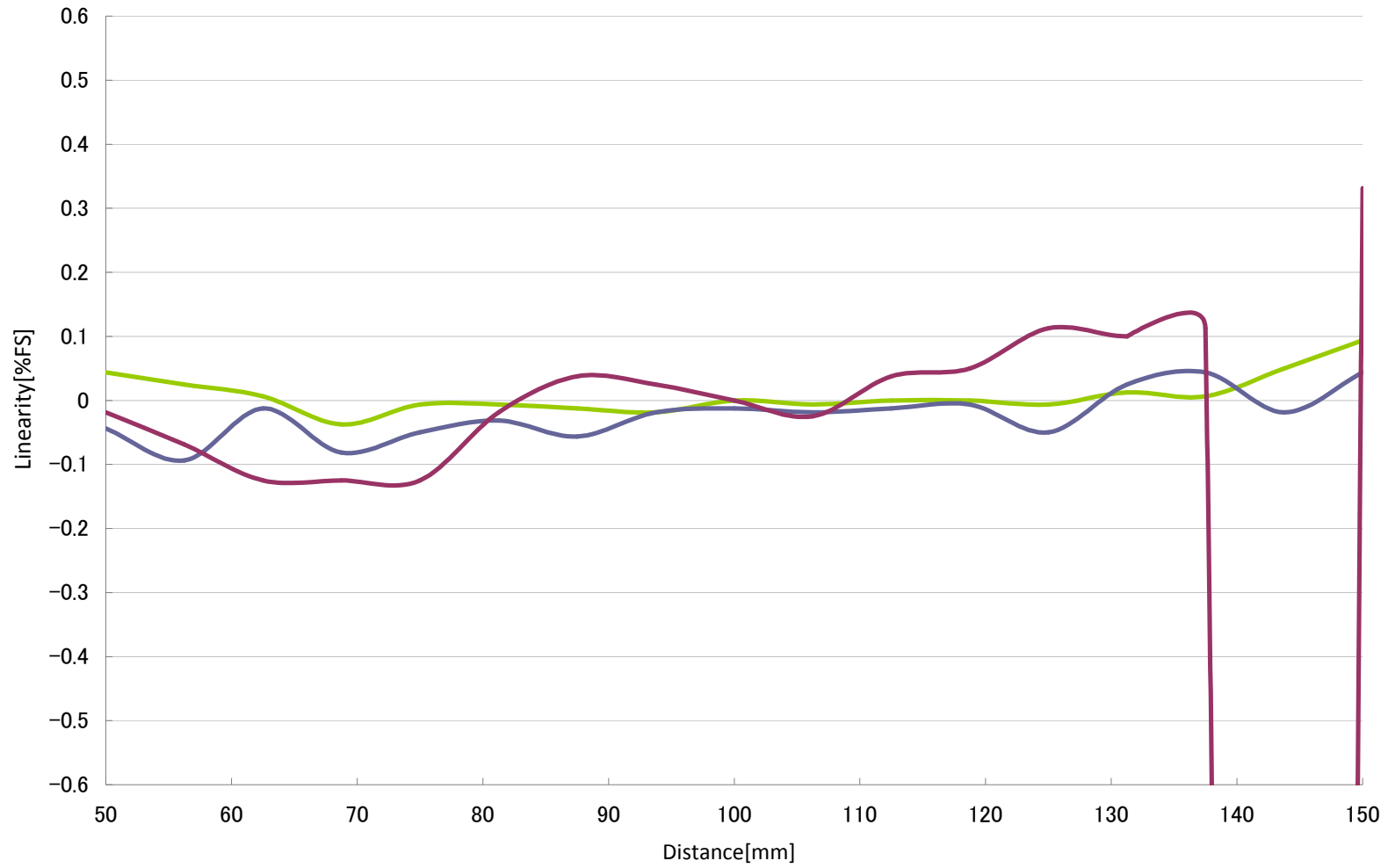
CD22 100mm type Linearity Current Output length+10°

- White ceramic
- Stainless steel
- Black rubber



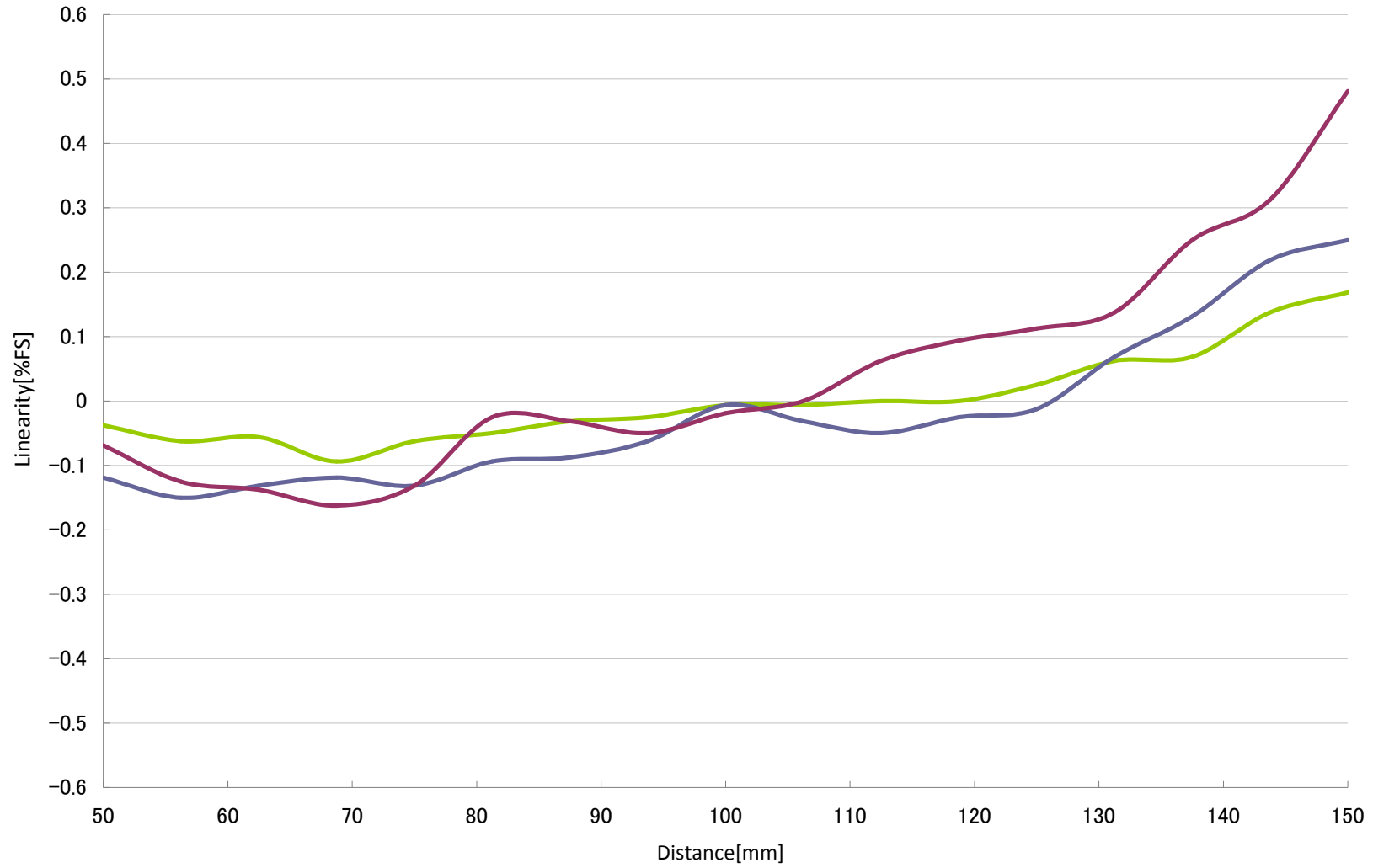
CD22 100mm type Linearity Current Output length-10°

- White ceramic
- Stainless steel
- Black rubber



CD22 100mm type Linearity Current Output width+10°

- White ceramic
- Stainless steel
- Black rubber



CD22 100mm type Linearity Current Output width-10°

- White ceramic
- Stainless steel
- Black rubber

