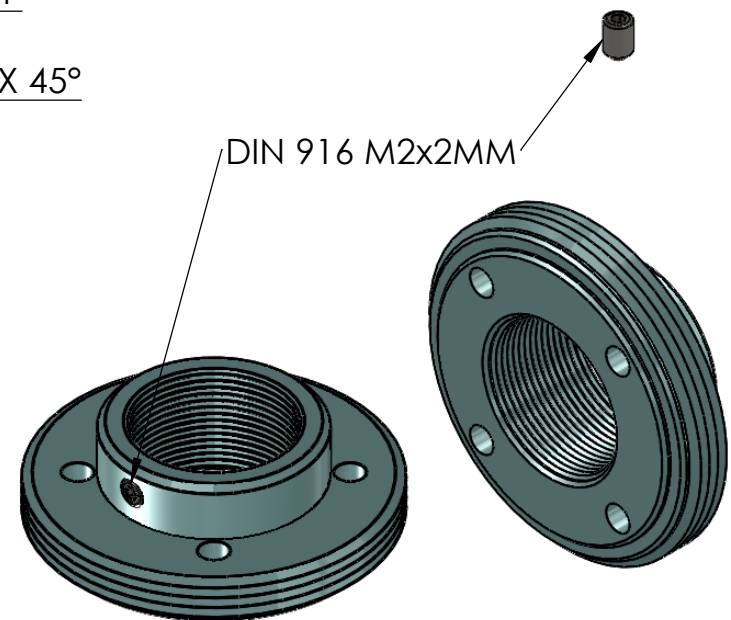
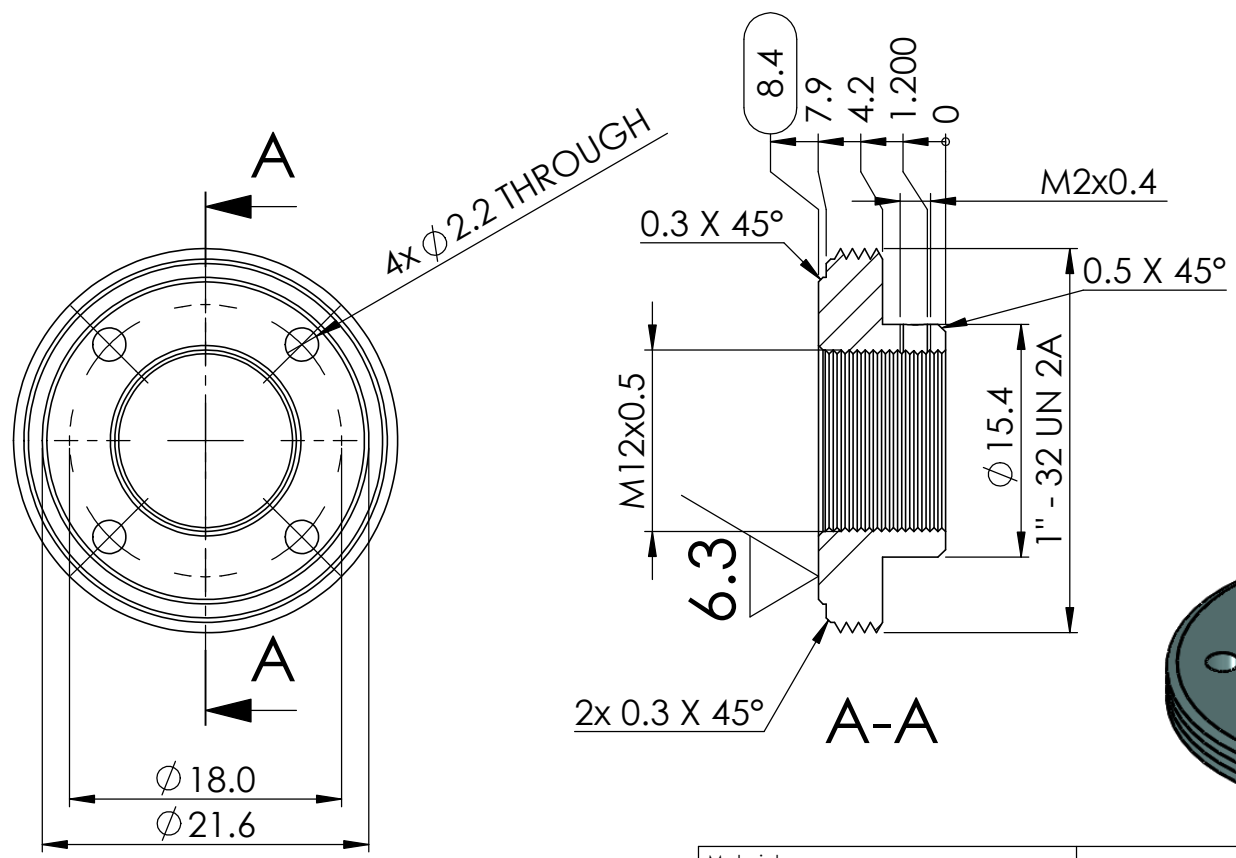


REVISIONS			
REV	DESCRIPTION	DATE	MODIFIED
A	RELEASED PER ECO 12-175	13AUG2012	RD

This document is proprietary to Cognex Corp., Natick, MA. and may not be used in any way, disclosed to others, or reproduced, in whole or in part, except as expressly authorized by Cognex in writing. Any permitted reproduction of this document must include this notice. ©2012 Cognex Corp. All rights reserved.



Material: SUS303/1.4305	
Volume: 1882.80mm ³	
Weight: 14.87g	
Tolerances	
x.x	± 0,1
x.xx	± 0,05
Drawn RD	Size A4
Approved ---	Scale 2:1

COGNEX

Title
C-MOUNT/M12x0.5 ADAPTER
DM300

Drawn RD	Date 15.05.2012	Dwg No. 114-1388R	Rev A
Approved ---	Scale 2:1	Unit mm	SHEET 1 OF 1

- NOTES:
- THIS PART MUST COMPLY WITH THE EU ROHS THAT RESTRICTS THE USE OF HAZARDOUS SUBSTANCES.
 - ALL DIMENSIONS AS SPECIFIED IN THE 3D-CAD FILE (SAME DRW# AND REV# AS THIS DRAWING) WITH TOLERANCES +/- 0.1MM.
 - REMOVE ALLS BURRS AND SHARP EDGES
 - INSERT A DIN 916 M2x2mm SOCKET SET SCREW