

Absolute-Encoder CEV65 - CO

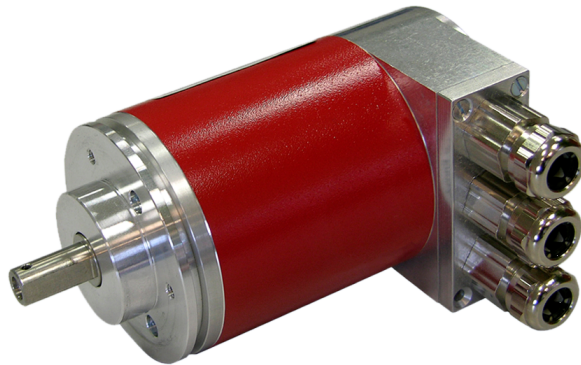
Ref.: K-CEV65-CO-1

18.11.2013

010102006502020201

Advantages

- _ Customer-specific solutions
- _ Flexible programming
- _ Further interfaces available
- _ Modular mechanical design
- _ Modular product line



General Data

| | |
|--------------------------------|---------------------------|
| Supply | |
| - Supply voltage | 11...27 VDC |
| Current consumption no load | <= 350 mA |
| Device design | |
| - Type | Single-/Multi-Turn |
| Total resolution | <= 25 Bit |
| Number of steps per revolution | <= 8192 |
| Number of revolutions | <= 4096 |
| CANopen - Interface | |
| - CANopen | EN 50325-4 |
| - Bus connection | ISO 11898-1, ISO 11898-2 |
| - CAN Specification 2.0 A | 11-Bit Identifier |
| - Device-Profile for Encoder | CiA DS406 |
| Transmission rate | |
| - Specific value | 20, 125, 500, 1000 kbit/s |
| - Adjustability | by means of DIP-switches |
| Parameter/Function, changeable | Resolution |
| | Preset parameter |
| | Counting direction |
| Type of parametrization | programmable |
| Programming - Tool | Fieldbus-Device |
| Maximum Speed, mechanically | <= 6000 1/min |

Subject to change.

TR-Electronic GmbH
 Eglshalde 6
 78647 Trossingen
 Tel. +49 (0) 7425 228-0
 info@tr-electronic.de
www.tr-electronic.de

Absolute-Encoder CEV65 - CO

Ref.: K-CEV65-CO-1

18.11.2013

010102006502020201

General Data continuation

| | |
|-------------------------------|--|
| Shaft load, axial/radial | $\leq 40 \text{ N}, \leq 60 \text{ N}$ |
| Bearing life time | $\geq 3.9\text{E}+10$ revolutions |
| Bearing life time - Parameter | |
| - Speed | 3000 1/min |
| - Operating temperature | 60 °C |
| - Shaft load, axial/radial | $\leq 20 \text{ N}, \leq 30 \text{ N}$ |
| Point of origin, shaft load | at the shaft end |
| Angular acceleration | $\leq 10\text{E}+4 \text{ rad/s}^2$ |
| Moment of inertia, typically | 2.5E-6 kg m ² |
| Start-up torque, 20 °C | 2 Ncm |
| Mass, typically | 0.7 kg |

Environmental conditions

| | |
|--------------------------|---------------------------|
| Vibration | |
| - Specific value | $\leq 100 \text{ m/s}^2$ |
| - Sine | 50...2000 Hz |
| Shock | |
| - Specific value | $\leq 1000 \text{ m/s}^2$ |
| - Half sine | 11 ms |
| Immunity to disturbance | DIN EN 61000-6-2 |
| Transient emissions | DIN EN 61000-6-3 |
| Working temperature | |
| - Standard | 0...+60 °C |
| - Optional | -20...+70 °C; |
| Storage temperature, dry | -30...+80 °C |
| Relative humidity | 98 %, non condensing |
| Protection class | |
| - Standard | IP65 |

Subject to change.

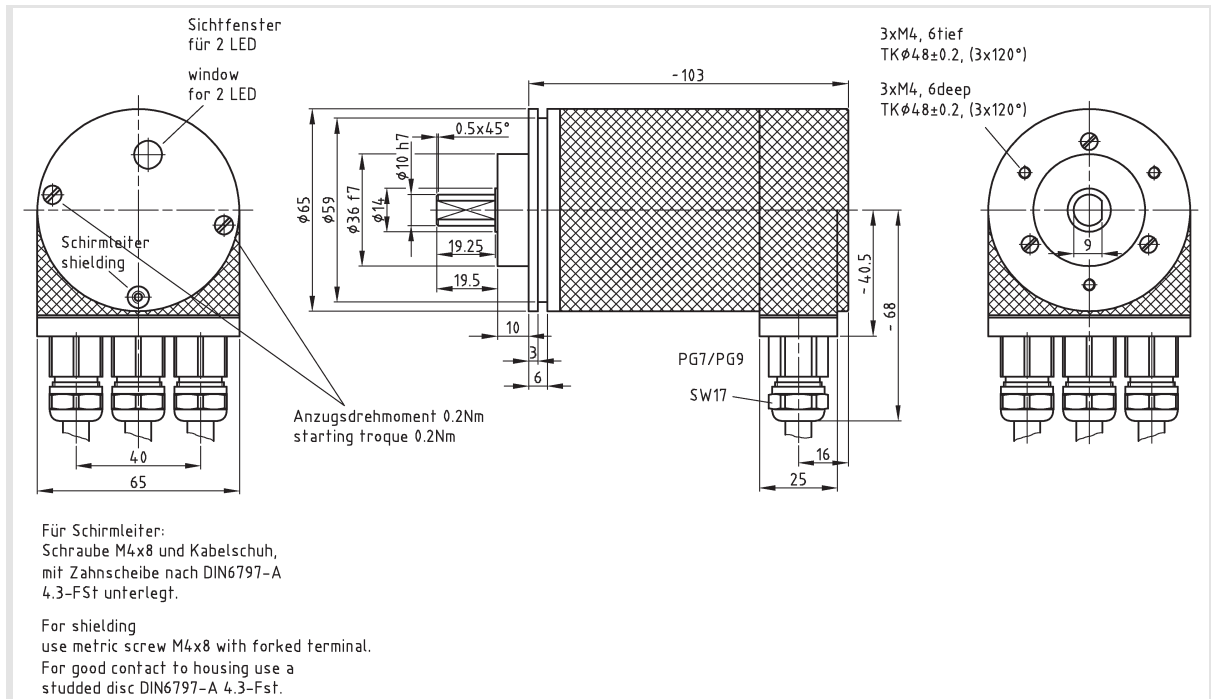
Absolute-Encoder CEV65 - CO

Ref.: K-CEV65-CO-1

18.11.2013

010102006502020201

Dimensional drawing



Subject to change.