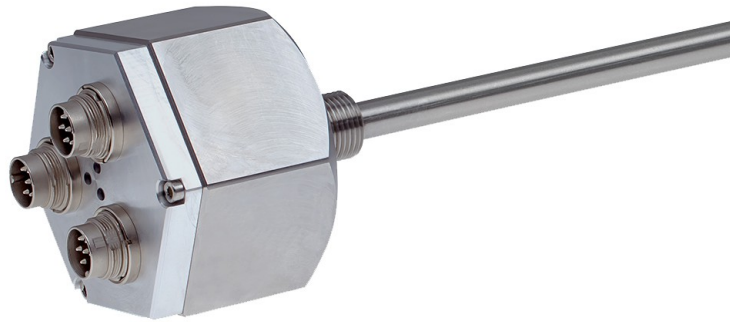


## LMR\_70\*180 ANA\_I+JUSTAGE

Order-#: 335-00001

25.11.2014 / 0102010700



Stock photo

### Advantages

- \_ 2-, 3-way redundant system
- \_ Adjustment via set-inputs
- \_ Customer-specific solutions
- \_ Highest availability
- \_ Independent position detection
- \_ Measures linear movements
- \_ Perfect fit for cylinders
- \_ Pressure proof tube housing
- \_ Wear-free detection

### Technical data for 335-00001

|                    |                       |
|--------------------|-----------------------|
| RESOLUTION         | 16 BIT                |
| MEASURING LENGTH   | 180,00 MM             |
| INTERFACE          | ANALOGUE-ADJUSTMENT   |
| OUTPUT LEVEL       | 4..20MA/4..20MA       |
| SUPPLY VOLTAGE     | 24V+/-10%             |
| CONNECTOR TYPE     | 2X BINDER 6P          |
| CONNECTOR-POSITION | AXIAL                 |
| MATING PLUG        | NO                    |
| ROD LENGTH         | 264,00 MM             |
| ROD END-MOUNTING   | NO                    |
| FLANGETYPE         | HYDRAULIC FLANGE      |
| MAGNET TYPE        | T4-M33                |
| TEMPERATURE RANGE  | -20+70°C              |
| OPTION-LA          | O-RING SEAL ON FLANGE |
| PINOUT NO.         | 10385                 |
| DRAWING NO.        | V999                  |
| FIRMWARE NO        | V999                  |

Subject to change.

TR-Electronic GmbH  
 Eglisshalde 6  
 78647 Trossingen  
 Tel. +49 (0) 7425 228-0  
 info@tr-electronic.de  
[www.tr-electronic.de](http://www.tr-electronic.de)

# LMR\_70\*180 ANA\_I+JUSTAGE

Order-#: 335-00001  
25.11.2014 / 0102010700

## General data for K-LMR70-A-1

|                             |   |
|-----------------------------|---|
| Supply                      |   |
| - Supply voltage            | 24 VDC $\pm$ 10 %   |
| Current consumption no load | $\leq$ 100 mA per measuring system                        |
| Measuring principle         | magnetostrictive  |
| Measuring length, standard  | 50...2000 mm, in steps                                    |
| Resolution                  | 0.04 mm   |
| Linearity deviation         | $\pm$ 0.10 mm $\leq$ 1500 mm<br>$\pm$ 0.15 mm $>$ 1500 mm |
| Reproducibility             | 0.04 mm   |
| Hysteresis                  | 0.02 mm $\leq$ 1500 mm<br>0.1 mm $>$ 1500 mm              |
| Temperature coefficient     | $<$ 40 ppm/ $^{\circ}$ C                                  |
| Straight line velocity      | no restrictions   |
| Mounting position           | no restrictions   |
| Material - Measuring body   | Cr/Ni - alloy   |
| Rod end mounting            | Option  |
| Magnet                      | T4-M33<br>other on request                                |
| Analog - Interface          |   |
| - Voltage/Current           | Factory setting   |
| - Resolution                | 16 Bit D/A converter                                      |
| - Voltage output            | 0...+10 VDC   |
| - Load resistance (U)       | $\geq$ 0.68 kOhm  |
| - Current output            | 0...20 mA   |
| - Current output            | 4...20 mA   |
| - Load resistance (I)       | $\leq$ 500 Ohm  |
| External inputs             |   |
| - Set-Input 1               | Analog initial point                                      |
| - Set-Input 2               | Analog end point  |
| - Logic level               | "0" $<$ +2V, "1" = Supply                                 |

## Environmental data

|                  |                             |
|------------------|-----------------------------|
| Vibration        |                             |
| - Specific value | $\leq$ 100 m/s <sup>2</sup> |
| - Sine           | 50...2000 Hz                |

Subject to change.

## LMR\_70\*180 ANA\_I+JUSTAGE

Order-#: 335-00001  
25.11.2014 / 0102010700

### Environmental data continuation

|                          |                           |
|--------------------------|---------------------------|
| Shock                    |                           |
| - Specific value         | $\leq 1000 \text{ m/s}^2$ |
| - Half sine              | 11 ms                     |
| Immunity to disturbance  | DIN EN 61000-6-2          |
| Transient emissions      | DIN EN 61000-6-3          |
| Working temperature      |                           |
| - Standard               | 0...+70 °C                |
| - Optional               | -20...+70 °C;             |
| Storage temperature, dry | -30...+85 °C              |
| Relative humidity        | 98 %, non condensing      |
| Protection class         |                           |
| - Standard               | IP65                      |
| Stray magnetic field     | < 3 mT                    |
| Measuring reference      | Measuring plane           |
| Pressure resistance      |                           |
| - Optional               | 600 bar, static           |

Subject to change.